

# MERCHANTS CATALOGUE

2026



# CONTENTS

●	04	<b>Introduction</b> Laydex Intro	●	21	<b>Floor Protection</b> Corriboard, Protex, Cover-It
●	06	<b>Breather Membranes</b> Corotop & Breathe-X	●	22	<b>Composite Decking</b> Teranna
●	08	<b>Building Envelope Solutions</b> DuPont™ Tyvek®	●	24	<b>Composite Fencing</b> Teranna
●	10	<b>Torch on &amp; Underslate membranes</b> Pluvitec & Felts	●	25	<b>Artificial Grass</b> Sage
●	12	<b>Cement Board &amp; MGO Board</b> Permabase & Tile Backer Board	●	26	<b>Loft Ladders</b> Minka & Oman
●	14	<b>Ready Mix</b> ProForm	●	28	<b>Sealants &amp; Building Chemicals</b> Bond-It
●	15	<b>Oxide Protective Paint</b> Syn-Oxide	●	52	<b>Premium Door Furniture</b> Fortessa Door Handles
●	16	<b>Radon/Gas Protection Systems</b> Radex 3000, Memtech, Juta, Titantech	●	64	<b>Door Handles &amp; Knobs</b> Basta Signature
●	18	<b>Gas &amp; Hydrocarbon Protection Systems</b> Juta & Titantech	●	66	<b>Door Handles</b> Basta
●	19	<b>Construction Films &amp; Damp Proofing</b> Polybase, Visqueen, DPM, DPC, TPS	●	70	<b>Rothley</b> Shelving, Hooks, Brackets, Rails, Handrails
●	20	<b>EPDM Membranes</b> Hertalan			



# Laydex Building Solutions

Laydex is a trusted leader in the Irish building materials industry, offering a wide range of high-quality products sourced from top global manufacturers. With 30 years in business, we provide exceptional service, expert technical support, and daily assistance to our customers.

Since our founding in 1995, we've continued to expand our product offering. With a diverse product portfolio ranging from damp proofing materials, pitched roof breather membranes to cement board and more.

We always strive to deliver the most innovative products for our customers. Our commitment to quality and value keeps us at the forefront of the Irish construction industry, delivering solutions that meet both current needs and future demands.



IRISH OWNED



QUALITY PRODUCTS



CERTIFIED STANDARDS



TECHNICAL SUPPORT



EXTENSIVE PRODUCT RANGE



30 years setting the standard in distribution



# Our Brands



# Breather Membranes



**Corotop®**  
BLUE 140

## COROTOP BLUE 140G/M<sup>2</sup>

Breathable 3-Layer Roofing Membrane

A membrane designed to resist mechanical damage, UV rays, and high temperatures. It offers excellent performance and reliability.

**Corotop®**  
GREEN STRONG 160

## COROTOP GREEN STRONG 160G/M<sup>2</sup>

High-grammature Membrane

Corotop Green 160gsm Membrane is a strong, vapour-permeable roofing underlay that offers enhanced durability, water resistance, and breathability.

**Corotop®**  
EXTRA PROTECT 165

## COROTOP EXTRA PROTECT BLUE 165G/M<sup>2</sup>

Hot Melted, Four-Layer Roof Membrane

Durable four-layer roofing membrane that is produced in a hot melt process. Utilizing the mesh and additional layer of vlies guarantees great resistance parameters around the membrane.

**Corotop®**  
RED STRONG 180

## COROTOP RED STRONG 180G/M<sup>2</sup>

3-Layer Vapour Permeable Membrane

Made using a thermobonding method for superior layer adhesion. It offers excellent durability, enhances safety during installation, and is especially recommended for fully-boarded roofs due to strong resistance properties.

**Corotop®**  
HOUSEWRAP 100

## COROTOP HOUSEWRAP 100G/M<sup>2</sup>

Highly Vapour Permeable Wind Insulation

A highly vapour permeable membrane. The product is used to prevent the escape of heat to protect the insulation against the blowing particles of heat insulation and settling the dust in it.

**Corotop®**  
SMART 120

## COROTOP SMART 120G/M<sup>2</sup>

Three-layer Permable Roof Underlayment

High resistance to mechanical damages enables safe work at a height regardless of weather conditions. Corotop Smart 120G is a vapour permeable, tear resistant breather membrane.



## COROTOP RIDGE KIT

Universal Dry Ridge Ventilation System

A complete dry ridge system designed for ventilating and mechanically fixing ridge tiles. The kit provides effective protection against wind-driven rain and snow while ensuring continuous roof ventilation. It eliminates the need for mortar, offering a quick, clean, and durable installation.

Product	Size	Mass per Unit Area	Code	Pallet
Corotop Blue	1.5m x 50m	140g/m <sup>2</sup>	610064	39
Corotop Green Strong	1.5m x 50m	160g/m <sup>2</sup>	610060	33
Corotop Extra Protect Blue	1.5m x 50m	165g/m <sup>2</sup>	610061	33
Corotop Red Strong	1.5m x 50m	180g/m <sup>2</sup>	610058	30
Corotop Housewrap	2.7m x 100m	100g/m <sup>2</sup>	610077	20
Corotop Smart	1.5m x 50m	120g/m <sup>2</sup>	610063	46
Corotop Ridge Kit	1m x 6m (Ridge Roll)	N/A	610080	72



## COROTOP MIX TAPE

Double-sided Bonding Tape

Used for bonding vapour barrier films, roof membranes and other plastic-based construction products.



## COROTOP PUR TAPE

Self-adhesive Sealing Tape

Used for sealing the contact points between the roof membrane and counter-battens and roof truss.

Product	Size	Weight	Code	Box
Corotop Mix Tape	25m x 40mm	10kg	610051	7
Corotop PUR Tape	30m x 50mm	10kg	610053	18

**Breathe-X**  
GREY 100

## BREATHE-X GREY 100G/M<sup>2</sup>

High Performance Waterproof Membrane

Prevents the ingress of wind-driven dust and rain and is a necessity in Irish weather for any pitched roofing or slate job.

**Breathe-X**  
BEIGE 120

## BREATHE-X BEIGE 120G/M<sup>2</sup>

High Performance Waterproof Membrane

Breathe-X Beige Breathable Membranes are made by thermally laminating a water vapour permeable film between two layers of non-woven polypropylene.

Product	Size	Mass per Unit Area	Code	Pallet
Breathe-X Grey	1.5m x 50m	100g/m <sup>2</sup>	610054	52
Breathe-X Beige	1.5m x 50m	120g/m <sup>2</sup>	610056	46

**Breathe-X**

**NI & UK MARKET**



## NEW BBA CERTIFIED VAPOUR PERMEABLE BREATHER MEMBRANE.

**Breathe-X**  
BEIGE 115

## BREATHE-X BEIGE 115G/M<sup>2</sup>

Vapour-permeable Roofing Membrane

The Breathe-X Beige Membrane is a durable, breathable, and water-resistant roofing underlay that protects against wind-driven rain allowing internal moisture vapour to escape.

**Breathe-X**  
BLUE 135

## BREATHE-X BLUE 135G/M<sup>2</sup>

Vapour-permeable Roofing Membrane

Lightweight yet robust vapour-permeable roofing underlay, designed to provide superior resistance to wind and water ingress while allowing controlled moisture vapour transmission.

**Breathe-X**  
GREEN 150

## BREATHE-X GREEN 150G/M<sup>2</sup>

Vapour-permeable Roofing Membrane

The Breathe-X Green 150gsm Membrane is a strong, vapour-permeable roofing underlay that offers enhanced durability, water resistance, and breathability.

**Breathe-X**  
RED 170

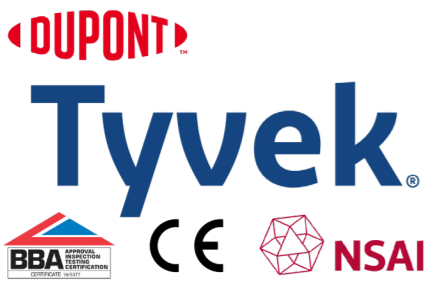
## BREATHE-X RED 170G/M<sup>2</sup>

Vapour-permeable Roofing Membrane

The Breathe-X Red 170gsm Membrane is a heavy-duty, vapour-permeable roofing underlay providing maximum strength, water resistance, and breathability.

Product	Size	Mass per Unit Area	Code	Pallet
Breathe-X Beige	1.5m x 50m	115g/m <sup>2</sup>	610069	72
Breathe-X Blue	1.5m x 50m	135g/m <sup>2</sup>	610070	60
Breathe-X Green	1.5m x 50m	150g/m <sup>2</sup>	610071	54
Breathe-X Red	1.5m x 50m	170g/m <sup>2</sup>	610068	54

# Building Envelope Solutions



**Tyvek® Building Envelope Solutions**  
 Enhance the durability, comfort, and energy efficiency of buildings. Whether it's a skyscraper or a single-family home, the building envelope serves as a crucial defense against air, water, and energy loss.

DuPont™ Tyvek® offers solutions that meet or exceed building codes, extend the lifespan of structures, and help reduce fossil fuel consumption. They resist moisture and air while being highly permeable, minimizing the risk of condensation, wood rot, and mould growth.



**DUPONT™ SUPRO**  
 A top breather membrane, shielding roofs from wind and water while boosting energy efficiency. Airtight and vapour-permeable, it suits all pitched roofs. Tyvek® Supro Plus adds integrated lap tape for use in the Tyvek® sealed roof system.



**DUPONT™ HOUSEWRAP**  
 Durable moisture protection for walls while remaining breathable to reduce condensation. Ideal for timber frame systems, it also suits steel frame and concrete walls. Surface-applied, it should be fixed directly to sheathing, insulation, or blockwork.



**DUPONT™ REFLEX**  
 The first reflective breather membrane for thermal management, boosting efficiency by reflecting radiant heat in summer and limiting heat loss in winter. Strong, water-resistant, and metallised, it's ideal for wall systems needing secondary protection from external moisture.



**AIRGUARD® REFLECTIVE**  
 A low-emissivity, 100% airtight vapour barrier boosts thermal comfort and performance when used with an airgap. It reflects up to 95% of radiant heat, reducing interstitial condensation, significantly enhancing overall thermal efficiency.



**AIRGUARD® CONTROL**  
 Designed to form a continuous vapour control layer that reduces air leakage and convective heat loss in roofs, walls, and floors, helping manage air movement and moisture around the building's habitable space.



**AIRGUARD® SMART**  
 Airtight, water-resistant, and adapts vapour resistance based on humidity. It lets moisture escape during drying, then functions as a traditional AVCL once dry providing effective protection and a reliable barrier, especially during winter.



**TYVEK® FLEXWRAP EZ**  
**Airtightness & Awkward Seal Areas**  
 Tyvek® FlexWrap tape can shape itself to create a highly effective seal for the membrane around any irregular shape or complex joint, whether around services, piping or cabling, into the corners and junctions of an aperture, around doorways, rafters, joists, etc. Tyvek® FlexWrap ensures continuity, compatibility and integrity with all Tyvek breather membranes and creates more airtight seals compared to standard tapes used on irregular shapes/penetrations.



**TYVEK® FIRECURB**  
 A lightweight, fire-retardant membrane for commercial and residential use. Using patented, halogen-free technology, it self-extinguishes when ignited, reducing smoke and droplet formation while keeping environmental impact minimal.



**TYVEK® STRUCTUREGUARD®**  
 The original housewrap, designed with unique material science to block air and water while allowing water vapour to escape. It helps protect homes from wind and rain, enhancing durability by guarding against moisture behind exterior cladding.



**TYVEK® UV FAÇADE**  
 A lightweight, advanced membrane for open and ventilated rainscreen cladding. It's water-resistant, vapour-permeable and windtight, and engineered for long-term UV and moisture protection in demanding exterior applications.



**TYVEK® AIRGUARD REFLECTIVE E**  
 A high-performance 100% airtight internal vapour barrier designed to maximise thermal efficiency in buildings. With a metallized and low-emissivity surface, it reflects up to 95% of radiant heat back into the interior.

Product	Code	Size	Weight	Mass per Unit Area	Pallet
Tyvek Supro	003701	1.5m x 50m	11kg	145g/m <sup>2</sup>	24
Tyvek Supro Plus	003703	1.5m x 50m	11kg	145g/m <sup>2</sup>	24
Housewrap	003709	2.8m x 100m	18kg	63g/m <sup>2</sup>	20
Airguard Control	003721	1.5m x 50m	8.5kg	108g/m <sup>2</sup>	24
Airguard Reflective	003723	1.5m x 50m	11.5kg	149g/m <sup>2</sup>	25
Airguard Smart	003722	1.5m x 50m	10.5kg	139g/m <sup>2</sup>	24
Tyvek Flexwrap EZ	003739	60mm x 10m	1.23kg	N/A	3 (per box)
Fire Curb	003799	1.5m x 50m	5.5kg	66g/m <sup>2</sup>	24
StructureGuard	003711	2.7m x 100m	18kg	58g/m <sup>2</sup>	24
StructureGuard	003712	1.4m x 100m	9kg	64g/m <sup>2</sup>	24
Reflex	003710	2.7m x 100m	22.5kg	83g/m <sup>2</sup>	20
UV Façade	003724	1.5m x 50m	15kg	195g/m <sup>2</sup>	24

**The Quality Underlay**  
 Tyvek® Supro protects your roof and your reputation

BBA | NSAI Agrément | DuPont Tyvek Supro CERT No. 049151

# Torch on & Underslate Membranes

**Torch-On Membranes** are polymer-modified bituminous membranes used for waterproofing substructures and roofs. These membranes are made from a blend of bitumen and polymers such as APP (Atactic Polypropylene) or SBS (Styrene Butadiene Styrene) to enhance cold temperature performance, elongation, and more. They are coated onto dimensionally stable reinforcements like polyester or fiberglass, which improve mechanical properties such as tear strength and puncture resistance.



Renowned for their advanced waterproofing solutions, Pluvitec offers durable, high-performance torch-on and underslating membranes. Trusted by top companies worldwide, their products are engineered for superior protection and long-lasting reliability in both roofing and infrastructure applications.

## ULTRATEC

Pluvitec Ultratec is an APP modified bituminous waterproofing membrane with a single strand composite polyester reinforcement providing very high mechanical characteristics and excellent dimensional stability.

## SPECIALTEC

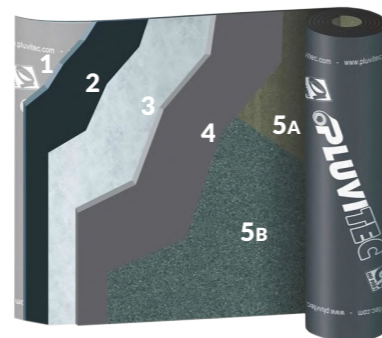
**Pluvitec Specialtec** is an APP modified bituminous waterproofing membrane with both composite polyester and fibreglass reinforcements providing both good mechanical characteristics and excellent dimensional stability.

## PLUSGUM

Pre-fabricated waterproofing membrane made of distilled bitumen and elasto-plastic polymers (APP) having a woven non woven single strand composite polyester reinforcement, which provide the membrane with high mechanical characteristics and excellent dimensional stability.

## COMPOSITION

- 1 PE film
- 2 Waterproofing mass
- 3 Single strand composite polyester fabric
- 4 Waterproofing mass
- 5A Polypropylene mat finish
- 5B Mineral finish



**The V Versions** have a fibre glass reinforcement, with excellent dimensional stability.

**The PA Versions** are self-protected on the upper face with mineral slates which reduce superficial heat absorption improving the durability of the membrane.

**The Self-Protected Versions** have a side selvedge of 10 cm and upon request a head selvedge of 15 cm, to improve adhesion between the sheets.



## EAVES FELT TYPE 5U

Polyester Underlay

**Eaves Felt Type 5U** is a high-performance polyester strip designed to protect the joint where underslating meets half-round gutters. Compatible with all roof types, materials, and membranes, it prevents water from getting behind the gutter and causing timber decay in fascias and rafters.



## IF SLATERS FELT

Fibre Base Underslating

A traditional underslating felt, favoured by roofers for use beneath tiles or slates. It also serves as a reliable vapour retarder in built-up roofing systems. Manufactured with a felt fibre base, reinforced with open-weave hessian, and coated with bitumen for durability.



## GREEN MINERAL SHED FELT

Pre-Fabricated Waterproofing Membrane

High-performance bitumen-based membrane for sheds, garages, and outbuildings. Reinforced with polyester for strength and stability. Easy to apply in a single layer using cold adhesive or hot bitumen. Mineral surface offers UV protection and long-lasting durability.



## AVAILABLE IN A RANGE OF FINISHES:

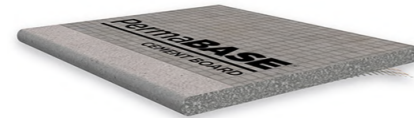
Product	Code	Size	Pallet
Ultratec Black Mineral	510768	10m roll	23
Pluvitec Ultratec P 4mm Sand Capsheet	510753	10m x 1m	24
Plusgum PA Grey/Green Mineral	510771	10m roll	25
Pluvitec Specialtec V 2kg/m <sup>2</sup> Underlay	510761	10m x 1m	60
Pluvitec Specialtec P4 Talc Capsheet	510756	10m x 1m	25
Pluvitec Specialtec P4 Sand Capsheet	510758	10m x 1m	25
Pluvitec Specialtec P 3mm	510755	10m x 1m	30
Pluvitec Plusgum P 4mm Talc Capsheet	510769	10m x 1m	24
Supertec P 4 Talc	510777	8m x 1m	30
IF Slaters Felt	610102	15m roll	36
Laribit Green Mineral Shed Felt	610253	10m x 1m	39
Eaves Felt Type 5U 333mm	610402	333mm x 16m	90
Eaves Felt Type 5U 500mm	610401	500mm x 16m	60



# Cement Board



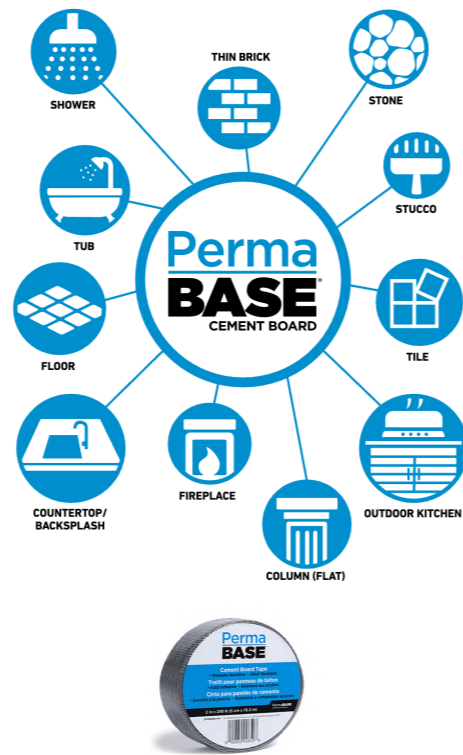
**PermaBase® Cement Board** is the perfect choice for exterior render, cladding, and a variety of other interior and exterior applications. Made from Portland cement, aggregate, and glass mesh, it offers a durable, moisture-resistant surface. With its patented EdgeTech Technology, the tapered, reinforced edges allow for closer fastening, providing a competitive edge over other products.



## PERMABASE CEMENT BOARD

Cement Board for Both Interior and Exterior Applications

PermaBase® Cement Board is a highly durable, impact-resistant, and dimensionally stable solution for both interior and exterior use. With excellent flexural, compressive, and tensile strength, it's ideal as underlayment or backing for showers, countertops, and floors. Its smooth finish and closed edges reduce hand chafing, making it more user-friendly than other brands.



Product	Size	Weight	Code	Pallet
PermaBase® Cement Board	12.5mm x 2.4m x 1.2m	40kg	402680	50
PermaBase® Cement Board	9mm x 2.4m x 1.2m	30kg	402687	40
PermaBase® Cement Board	19mm x 1.2m x 2.4m	60kg	50000080	20
PermaBase® Ultra Backer	6mm x 0.9m x 1.5m	10kg	50000043	60

## PERMABASE INSTALLATION ESSENTIALS



### PERMABASE SCREWS

Corrosion Resistant Screws

PermaBase® Screws are corrosion resistant screws specifically designed to be used with PermaBase® Cement Boards. They are used to attach PermaBase® Cement Board to wood or steel studs, plywood subfloors, ceilings and countertops.



### PERMABASE JOINT FILLER

Joint reinforcement compound

PermaBase Exterior Joint Filler is a durable, grey-colored compound designed for joint treatment and skim coating of lightweight, fibre-reinforced cement boards, specifically PermaBase Cement Boards.



### PERMABASE TAPE

Alkali Resistant Fiberglass Tape

PermaBase® Tape is an alkali resistant fiberglass tape. The tape is especially designed to reinforce PermaBase® Cement Board joints and corners. PermaBase tape is easy to embed due to its large openings.

Product	Code	Head Diameter	Length	Colour	Box
PermaBase Screws for Metal 100 Pack	402668	0.45" (11.4mm)	32mm	Silver	40
PermaBase Screws for Wood 100 Pack	402697	0.45" (11.4mm)	32mm	Silver	40
	402648	0.45" (11.4mm)	45mm	Silver	36

Product	Code	Size	Colour	CTN/BOX
PermaBase Joint Filler	402700	5kg	White	1 CTN
PermaBase Joint Tape	402696	75mm x 46m	Grey	12 BOX



Made of Real Portland Cement



Internal & External Applications



Moisture Resistant



Quick and Easy to Install

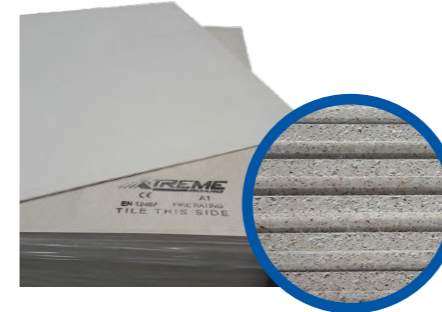


Fire Resistant A1 Rating

## TILE BACKER BOARD



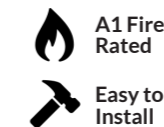
X-TREME TILE BACKER BOARD provides a strong, moisture-resistant surface for tiling in wet areas like bathrooms and kitchens. Designed for durability and easy installation, they ensure a solid foundation for tiles, preventing damage and enhancing the longevity of your finishes.



### BATHROOMS

### KITCHENS

### WETROOMS



A1 Fire Rated



Water Resistant



Range of Sizes



Eco-Friendly



Easy to Install



Sound Insulation



Impact Resistant



Thermal Value

Product	Size	Weight	Code	Pallet
X-Treme Tile Backer Board	1.2m x 1.2m x 6mm	9.5kg	402810	140
X-Treme Tile Backer Board	2.4m x 1.2m x 6mm	20kg	402811	100
X-Treme Tile Backer Board	2.4m x 1.2m x 9mm	28kg	402812	70
X-Treme Tile Backer Board	1.2m x 0.8 x 12mm	10kg	402814	75
X-Treme Tile Backer Board	1.2m x 0.6 x 6mm	5kg	402822	150
X-Treme Tile Backer Board	1.2m x 0.6 x 12mm	5kg	402823	75
Multibase Board	2.4m x 1.2m x 12mm	37.5kg	402813	50

## EVOTECH®

Evotech is a CE certified, extremely lightweight board with additives of mineral aggregates and reinforced on both sides with glass fibre mesh.



A1 Fire Rated



Moisture Resistant



Impact Resistant



Easy to cut

Product	Size	Code	Pallet
EVOTECH	1200 X 2400 X 12mm	TS-12024012	50

# Ready Mix



## The superior joint compound solution.

ProForm is the ultimate joint compound, offering unmatched flexibility and consistency. It empowers finishers to deliver flawless, bold, and lasting results with confidence.



### ALL PURPOSE BLACK LID All Purpose Joint Compound

ProForm® BRAND All Purpose Joint Compound is a vinyl base ready mix joint compound for the professional that may be used directly from the container.

All Purpose Joint Compound is designed for tape application, fastener spotting and complete joint finishing of gypsum board.

It can also be used to repair cracks in plastered walls, to texture surfaces and to laminate gypsum board to other surfaces.



### MULTI-USE RED LID Multi-Use Joint Compound

ProForm® BRAND Multi-Use is a vinyl base ready mix joint compound formulated especially for professional drywall contractors and finishers.

It may be used directly from the container.

ProForm Multi-Use Joint Compound is designed for tape application, fastener spotting, texturing and complete joint finishing of gypsum board.



### LITE BLUE LID Lightweight Joint Compound

ProForm® BRAND Lite Blue Joint Compound helps you get an easy, professional finish.

So after you apply ProForm® BRAND Lite Blue and your final skim coat, you'll have a smooth and consistent surface, ready for priming and painting.

ProForm® BRAND Lite-Blue Joint Compound is a vinyl base ready mix lightweight joint compound.



### QUICK SET™ LITE Quick Setting Joint Compound

Lightweight drywall joint compound is ideal for all phases of finishing, including taping, finishing, filling, patching, skimming, laminating, and even texturing.



### PROFORM® PAPER JOINT TAPE Drywall Joint Tape

Drywall joint tape perfect for use with ready mix or setting-type joint compounds and gypsum veneer plaster systems. Conceals and reinforces wallboard joints and interior angles.

Product	Code	Size	Colour	Pallet
All Purpose Black Lid	402802	5.4kg	White	144
Multi-Use Red Lid	402801	17L	White	45
Lite Blue Lid	402800	17L	White	45
Quick Set Lite Sand	402686	8.2kg	White	60
ProForm Paper Joint Tape	402692	500ft x 50mm	White	10/box

# Oxide Protective Paint



A range of oxide paints for structural steel, farm buildings, sheds, corrugated roofs, and other metal surfaces.

With an extremely advanced durability, the lead and chrome free SYN-OXIDE paint acts as an outstanding weather shield, offering protection against external factors, and at the same time enhances the appearance of the farmyard. SYN-OXIDE is an easy-to-apply paint, needs minimum preparation, and assures effective results.

- True reliability:
- Exceptional covering power:
- Proven efficiency:
- Weather shield:
- Environmental commitment
- Simple choice:

For use on both bare and galvanised metal  
1 litre will cover up to 10 square meters  
On all plain or corrugated iron surfaces  
High anti-corrosive properties  
Lead and chrome free oxide paint  
All 6 classic colours are available



Product	Code	Size	Pallet/CTN
Red Syn-Oxide	SYNOXIDE-RED-1	1L	6
Red Syn-Oxide	SYNOXIDE-RED-2.5	2.5L	4
Red Syn-Oxide	SYNOXIDE-RED-5	5L	4
Red Syn-Oxide	SYNOXIDE-RED-20	20L	1
Light Green Syn-Oxide	SYNOXIDE-GRN-1	1L	6
Light Green Syn-Oxide	SYNOXIDE-GRN-2.5	2.5L	4
Light Green Syn-Oxide	SYNOXIDE-GRN-5	5L	4
Light Green Syn-Oxide	SYNOXIDE-GRN-20	20L	1
Dark Green Syn-Oxide	SYNOXIDE-DG-1	1L	6
Dark Green Syn-Oxide	SYNOXIDE-DG-2.5	2.5L	4
Dark Green Syn-Oxide	SYNOXIDE-DG-5	5L	4
Dark Green Syn-Oxide	SYNOXIDE-DG-20	20L	1
Grey Syn-Oxide	SYNOX-MG1	1L	6
Grey Syn-Oxide	SYNOX-MG2.5	2.5L	4
Grey Syn-Oxide	SYNOX-MG5	5L	4
Grey Syn-Oxide	SYNOX-MG20	20L	1
Dark Grey Syn-Oxide	SYNOXIDE-GRY-1	1L	6
Dark Grey Syn-Oxide	SYNOXIDE-GRY-2.5	2.5L	4
Dark Grey Syn-Oxide	SYNOXIDE-GRY-5	5L	4
Dark Grey Syn-Oxide	SYNOXIDE-GRY-20	20L	1
Black Syn-Oxide	SYNOXIDE-BLK-1	1L	6
Black Syn-Oxide	SYNOXIDE-BLK-2.5	2.5L	4
Black Syn-Oxide	SYNOXIDE-BLK-5	5L	4
Black Syn-Oxide	SYNOXIDE-BLK-20	20L	1
Syn-Oxide Primer	SYN-OXIDE PRIMER GREY 1LTR	1L	6
Syn-Oxide Primer	SYN-OXIDE PRIMER GREY 5LTR	5L	4

Available Sizes:

1L 2.5L 5L 20L

# Radon & Gas Protection Systems

**Gas protection systems** prevent harmful ground gases like Radon, Methane, and CO<sub>2</sub> from entering buildings. These systems use certified membranes and accessories to create a sealed, safe, and compliant barrier – essential for protecting both health and structure in modern construction.

## RADEX 3000

### RADEX 3000 RADON PROTECTION SYSTEM

High-performance Radon barrier system for protection against Radon. Fully compatible ancillary products available to form a complete and compliant solution.

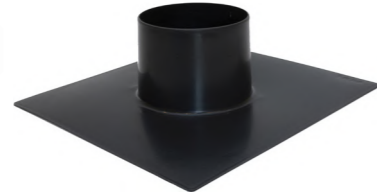
#### Compatible Ancillaries:

Radex Radon Tape, Top Hats, JUTA GR SAM, WP SAM, Titan Tape, Radon DPC, GP Primer, Liquid Gas Barrier, Lap Tape



**RADEX 3000**  
Non-Reinforced Radon Barrier

Provides radon and damp protection for buildings. Not suitable where hydrostatic pressure is present.



**RIGID TOP HAT**  
Pre-Formed Section

The Laydex Top Hat is a pre-formed section that provides a safe and strong sealed connection around pipe penetrations in a radon barrier membrane.



**FLEX TOP HAT W/ JUBILEE CLIP**  
Pre-Formed Section

A flexible top hat designed for gas protection systems, featuring a secure Jubilee clip to ensure a tight, reliable connection.



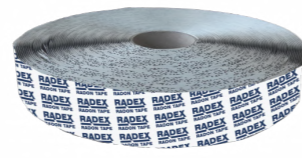
**RADON POLYSUMP**  
Passive Ventilation Unit

Used to passively vent radon from the home and should be linked by appropriate 110mm pipework.



**RADON CAP LINK**  
Extraction Connector

To be used with the Poly-Sump, provides an easily identifiable connection point for radon extraction.



**RADEX RADON TAPE**  
Membrane Sealing Tape

To be used with the Poly-Sump, provides an easily identifiable connection point for radon extraction.

## MEMTECH

### MEMTECH R1 GAS PROTECTION SYSTEM

Reinforced gas membranes protecting buildings from Radon, CO<sub>2</sub> and moisture. Memtech R1 doubles as a high-performance DPM, ensuring long-term durability.

#### Compatible Ancillaries:

Radon Tape, GR SAM, WP SAM, Titan Tape, Radon DPC, GP Primer, Liquid Gas Barrier, Lap Tape



**TITANTECH**

**GP®1 Gas Barrier** is a multi-layer, low-density polyethylene membrane, reinforced with a polypropylene grid with integral aluminium foil. GP®1 is specifically designed and manufactured to perform as a Methane, Carbon Dioxide, Radon, Ground Gas, air and moisture protection system.



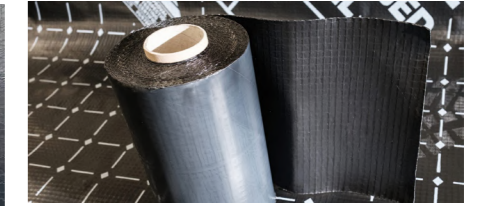
**GR/GP® SAM**  
Self-adhesive gas and waterproof membrane

GP® SAM is a bituminous sheet with reinforced LDPE top layer and peel-off backing. Used for protecting underground structures from water and harmful gases and as a self-adhesive accessory to GP®1.



**WP SAM**  
Self-adhesive, waterproof membrane

WP SAM is a bituminous, self-adhesive sheet with a grey polyolefin top layer and peel-off backing. Used for waterproofing underground structures and preventing radon ingress.



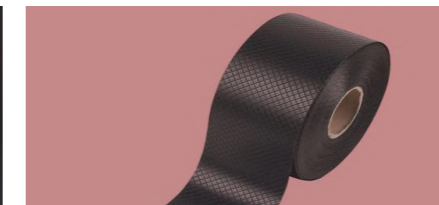
**JUTA GP®1 SAM**  
Self-adhesive gas and waterproof membrane

GP®1 SAM is a bituminous sheet used to protect underground structures from water and harmful ground gases. Designed as a self-adhesive accessory to GP®1.



**GP® TAPE**  
Double-sided butyl jointing tape

GP® TAPE is an extruded, double-sided butyl tape with release film for easy installation. It seals joints in gas barriers, preventing the passage of water, vapour, air, and gas in construction applications.



**GP® RADON DPC**  
Radon/moisture-resistant DPC

GP® Radon DPC is a high performance tri-polymer DPC designed to resist radon gas and moisture. Ideal for use in building foundations requiring enhanced protection.



**GP® TITAN TAPE**  
Double-sided butyl jointing tape

GP® Titan Tape is a double-sided extruded butyl tape with release film for easy installation. It seals joints in gas barriers and prevents the passage of water, vapour, air, and gas in construction.



**GP® PRIMER**  
Quick-drying, high-performance primer

GP® Primer is a low-viscosity, quick-drying primer designed to improve adhesion to damp substrates. Ideal for use with gas membranes and bituminous products.



**GP® LIQUID BARRIER**  
Liquid gas and waterproof membrane

GP® Liquid Barrier is a red, single-component synthetic rubber system used for gas protection, damp proofing, or waterproofing. It's elastic, UV-resistant, and adaptable to various project needs.



**GP® LAP TAPE**  
Single-sided aluminium jointing tape

GP® Lap Tape is an adhesive aluminium foil tape with a release film, used for sealing joints in gas barriers. It blocks water, vapour, air, and gas in damp proofing and gas protection systems.

Product	Code	Size	Colour	Pallet/Box	RADEX 3000	MEMTECH R1	JUTA GP1
Memtech R1 Radon Membrane	701178	3m x 30m	Red/Black	40	✗	✓	✗
Rigid Top Hat	701172	110mm	Black	50	✓	✓	✓
Radon Polysump	701173	1.3kg	Black	90	✓	✓	✓
Radex Radon Tape	701187	30mm x 30m	Black	500 (10 per box)	✓	✓	✗
Juta GP Primer	701175	5L	Black	144	✓	✓	✓
Juta Liquid Gas Barrier	701174	5kg	Black	72	✓	✓	✓
Juta GR-SAM 1m x 20m	GR-SAM-1MT	1m x 20m	Black	20	✓	✓	✓
Juta GR-SAM 0.3m x 20m	GR-SAM	0.3m x 20m	Black	60	✓	✓	✓
Radex 3000 Barrier	701180	4m x 20m	Anthracite/Red	40	✓	✗	✗
Radex 3000 Barrier (centrefold)	701182	4m x 20m	Anthracite/Red	30	✓	✗	✗
Juta Gas Resistant DPC 900mm	GRDPC900	900mm x 20m	Black	50	✓	✓	✓
Radon Cap Link (straight)	701046	110mm	Black	384	✓	✓	✓
Radon Cap Link (bend)	701045	110mm	Black	256	✓	✓	✓

# Gas & Hydrocarbon Protection

**Gas and Hydrocarbon Protection Systems** offers reliable barriers against harmful gases and hydrocarbons, ensuring long-term protection for buildings and infrastructure. Designed for durability, it safeguards against contamination and prevents structural damage, delivering peace of mind for demanding environments.



## GP<sup>®</sup> TITANFLEX High-Performance Multifunctional Membrane

High-performance membrane protects against VOCs, gases, hydrocarbons, and water. Proven for the most aggressive environments.



## GP<sup>®</sup> TITANBOND Pre-Applied Fully Bonded Waterproofing Membrane

Waterproofing membrane with TITANFLEX and geotextile, offering bonded protection against water, VOCs, and ground gases.



## GP<sup>®</sup> TITANTANK Self-Adhesive Version of the GP<sup>®</sup> Titanflex

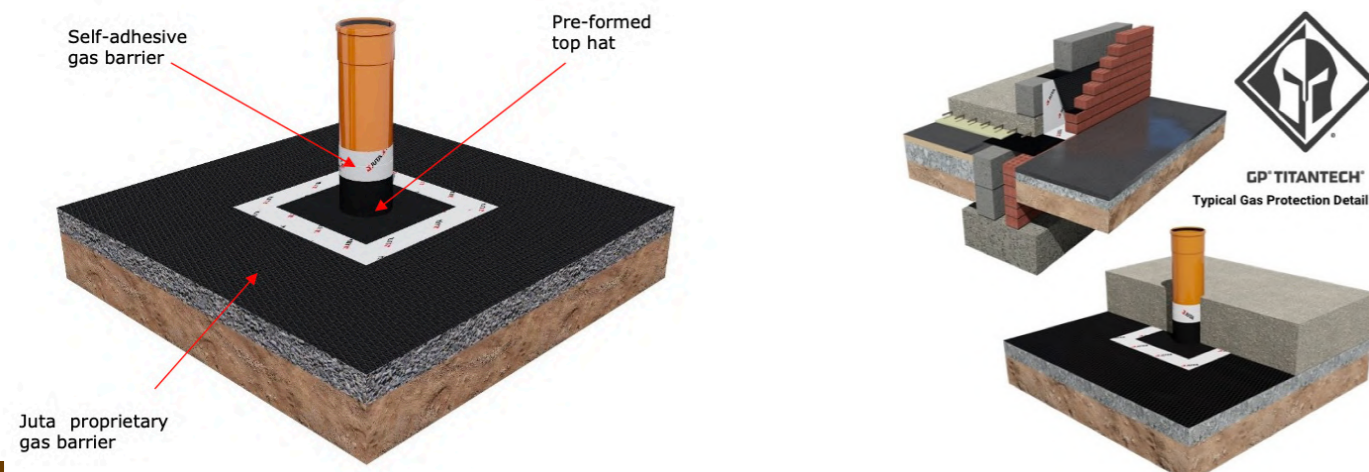
Self-adhesive membrane with TITANFLEX top layer, used for gas and waterproofing underground structures post-application.



## GP<sup>®</sup>1 GAS BARRIER Multi-layer gas barrier

A multi-layer, reinforced LDPE membrane with aluminium foil, designed for protection against methane, carbon dioxide, radon, and moisture. It meets BRE, CIRIA, and BS 8485 standards for ground gas protection.

Product	Code	Size	Colour	Pallet
GP <sup>®</sup> TITANFLEX Gas and Hydrocarbon Membrane	GPTITAN2X50	2m x 50m	Black	14
GP <sup>®</sup> TITANTANK Self-Adhesive Membrane	JUTA GP-TITAN	0.9 x 20m	Black	14
GP <sup>®</sup> TITABOND Pre-Applied Membrane	JUTA GP-TITAN 1.9	1.9m x 25m	Black	16
GP <sup>®</sup> 1 Gas Barrier	GP0060	2m x 50m	Black	25



# Construction Films & Damp Proofing



## POLYBASE DPC

Suitable for all low rise domestic constructions

The DPC in this range is produced with high quality materials and is suitable for all low rise construction projects. It is a durable membrane that offers great mortar adhesion and is available in a range of sizes.



## LAYDEX BUILDING FILMS

Suitable for a wide variety of construction applications

We stock a wide range of Polythene Building Films suitable for a wide variety of construction applications. All films have exceptional tear resistance and tensile strength.



## NSAI POLYBASE

Polythene Damp Proof Membrane

Polybase DPM consists of a polyethylene film for use in solid concrete ground floors not subject to hydrostatic pressure, to protect the building against the ingress of moisture from the ground. Ireland's first NSAI Certified DPM.

Product	Code	Colour	Size	Packs per pallet
<b>DPC - ROI MARKET ONLY</b>				
Polybase DPC 100mm (9 rolls)	IRLDPC100	Black	22.5m <sup>2</sup>	64
Polybase DPC 150mm (6 rolls)	IRLDPC150	Black	22.5m <sup>2</sup>	64
Polybase DPC 225mm (4 rolls)	IRLDPC225	Black	22.5m <sup>2</sup>	64
Polybase DPC 300mm (3 rolls)	IRLDPC300	Black	22.5m <sup>2</sup>	64
Polybase DPC 337.5mm (3 rolls)	IRLDPC337.5	Black	25.31m <sup>2</sup>	64
Polybase DPC 375mm (2 rolls)	IRLDPC375	Black	18.75m <sup>2</sup>	64
Polybase DPC 450mm (2 rolls)	IRLDPC450	Black	22.5m <sup>2</sup>	64
Polybase DPC 600mm (2 rolls)	IRLDPC600	Black	30m <sup>2</sup>	64
Polybase DPC 900mm (1 roll)	IRLDPC900	Black	22.5m <sup>2</sup>	64
<b>HIGH PERFORMANCE DPC - ROI MARKET ONLY</b>				<b>Rolls per pallet</b>
Visqueen Zedex CPT DPC - 100mm	805364	Black	2m <sup>2</sup>	450
Visqueen Zedex CPT DPC - 150mm	805365	Black	3m <sup>2</sup>	300
Visqueen Zedex CPT DPC - 225mm	805366	Black	4.5m <sup>2</sup>	200
Visqueen Zedex CPT DPC - 450mm	805372	Black	9m <sup>2</sup>	100
Visqueen Zedex CPT DPC - 600mm	805373	Black	12m <sup>2</sup>	100
Visqueen Zedex CPT DPC - 900mm	805374	Black	18m <sup>2</sup>	50
Visqueen Zedex CPT DPC - 1200mm	RS072268	Black	24m <sup>2</sup>	50
Visqueen Zedex CPT DPC - 1400mm	RS072268	Black	28m <sup>2</sup>	28
<b>DPM - ROI MARKET ONLY</b>				<b>Packs per pallet</b>
1000G (Temporary Waterproofing)	701142	Black	15 x 3.5m	103
1000G (VCL CE marked EN13984)	701159	Clear	4 x 25m	28
1200G	701149	Black	15 x 3.5m	28
2000G	701152	Black	4 x 12.5m	28
Heavy Gauge Clear	701162	Clear	15 x 3.5m	100
Visqueen 1000 Gauge Fire Rated	701150	Orange	4 x 25m	24
<b>NSAI DPM - ROI MARKET ONLY</b>				<b>Rolls per pallet</b>
1200G - NSAI Polybase	701141	Black	13 x 3.4m	75
<b>DPC - NI MARKET ONLY</b>				<b>Packs per pallet</b>
BS DPC 100mm (9 rolls)	701313	Black	30m	65
BS DPC 150mm (6 rolls)	701302	Black	30m	65
BS DPC 225mm (4 rolls)	701303	Black	30m	65
BS DPC 300mm (3 rolls)	701304	Black	30m	65
BS DPC 337.5mm (3 rolls)	704000	Black	30m	65
BS DPC 375mm (3 rolls)	701312	Black	30m	65
BS DPC 450mm (2 rolls)	704002	Black	30m	65
BS DPC 600mm (2 rolls)	704003	Black	30m	65
BS DPC 900mm (1 roll)	704004	Black	30m	65
<b>BBA DPM - NI MARKET ONLY</b>				<b>Packs per pallet</b>
1000G - BBA DPM	701156	Black	4 x 25m	44
1000G - BBA DPM	701176	Virgin Clear	4 x 25m	44
1200G - BBA DPM	701153	Black	4 x 25m	44
2000G - BBA DPM	701152	Black	4 x 12.5m	40
<b>TPS - NI MARKET ONLY</b>				<b>Rolls per pallet</b>
Heavy Duty	701176	Blue	4 x 25m	100
Medium Duty (TPS)	701167	Clear	4 x 50m	100
Heavy Duty (TPS)	701168	Clear	4 x 25m	100
Heavy Duty	701169	Black	4 x 25m	100

# EPDM Membranes



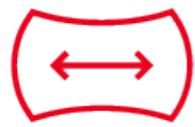
**Hertalan EPDM Membrane** is a flexible membrane which is used to create water and airtight seals around openings such as windows, doors and SFS sections on construction projects. Hertalan EPDM has excellent water resistance properties and is BBA approved for façade applications.

## Typical uses include:

- Weather & airtight seals around windows, doors and curtain walling systems
- Weather & airtight seals from SFS sections to the concrete frame
- Balcony waterproofing
- Top of parapet walls



Extremely long-term safe



Flexibility when Fitted



Installation without open flame



Ideal for green roofing



Ecologically safe



Circular Sustainability



## EPDM WATERPROOF ADHESIVE PASTE

High-quality adhesive glue for façade application

This sealant can be used on both horizontal and vertical surfaces. Coverage approx. 7 linear metres for a cartridge (pea sized bead).

## EPDM WATERPROOF ADHESIVE PASTE

Ready-to-use contact adhesive

Creates a strong adhesion between two layers of EPDM sheets or when the membrane to a suitable base. Should be applied to both sides. The adhesive bond is elastic and waterproof, and when it has completely dried, it is resistant

Product	Code	Size	Weight	Pallet
FS14 Hertalan EPDM Façade Waterproofing Adhesive Paste	001418	600ml	0.6kg	660
Hertalan EPDM Façade Waterproofing	001412	1400mm x 25m	27.5kg	28
Hertalan EPDM Façade Waterproofing	001416	150mm x 20m	10kg	210
Hertalan EPDM Façade Waterproofing	001415	200mm x 20m	10kg	175
Hertalan EPDM Façade Waterproofing	001414	300mm x 20m	10kg	105
Hertalan EPDM Façade Waterproofing	001430	500mm x 20m	27.5kg	70
KS137 Hertalan EPDM Façade Waterproofing Adhesive	001417	5kg	5.3kg	60

# Floor Protection



## CORRIBOARD

### Floor Protection Sheets

Manufactured as an extruded polypropylene sheet, Corriboard is the original fluted protection board used on building and refurbishment contracts.

Available in a wide range of weights, grades and custom sizes.

### USED TO PROTECT

Doors, walls, stairs, floors, partitions, windows, bathrooms, columns & much more!

## CORRIBOARD FIRE RATED Flame Retardant Sheets

Corriboard is extruded from flame retardant polypropylene into a wide range of weights, grades and custom sizes of fluted board. It provides an extremely versatile form of protection offering light through to heavy duty compression and impact resistance for floors, walls, doors and horizontal surfaces.

Product	Code	Thickness	Colour	Pallet
Corriboard Fire Rated	820802	2.1mm	White	550
Corriboard Floor Protection	820801	2.1mm	Black	550
Corriboard Floor Protection	820800	2.1mm	White	550
Corriboard Floor Protection	820804	4.0mm	Black	275
Corriboard Floor Protection	820808	4.0mm	White	275
Corriboard Floor Protection	820805	6.0mm	Black	185
Corriboard Floor Protection	820806	9.2mm	Black	120



## HARDFLOOR PROTECTOR

### Hardfloor & Glass Protector

High-performance, self-adhesive protection material for covering and protecting hard floors and windows. Protects against costly damage to most surfaces.



## PROTEX

### Surface Protector

Protex is a versatile surface protector for all trade, decorating and DIY projects. Lightweight, impact-resistant, and waterproof surface protection sheet. Flexible and easy to cut.



## CARPET PROTECTOR

### Carpet Protecting Self-Adhesive

High-performance, self-adhesive protection material for covering and protecting carpets and textiles. Easy application, simply unwind and cover-it.

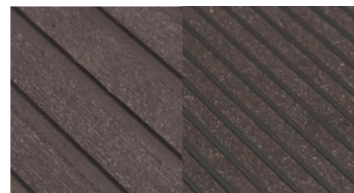
Product	Code	Size	Colour	Box
Cover-It Hardfloor & Glass Protector	BDCIHP25	600mm x 25m	Blue	24
Cover-It Hardfloor & Glass Protector	BDCIHP50	600mm x 50m	Blue	15
Cover-It Carpet Protector	BDCICP25	600mm x 25m	Translucent	24
Cover-It Carpet Protector	BDCICP50	600mm x 50m	Translucent	15
Protex Surface Protector	820798	1200x 600x 2.1mm	Black	22 (10 sheets per pack)

# Composite Decking

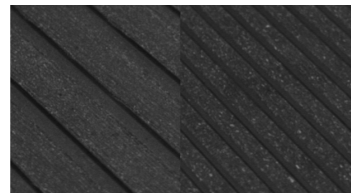


**Composite decking** is made from high density polyethylene and recycled wood fibre, with its raw material composition of recycled woods and plastics making it environmentally friendly. A UV stabilizer has been added to the product to ensure decking boards are fade free. This will also prevent mould and mildew from penetrating and degrading the boards over time. Teranna Composite decking will generally **last over 20 years in outdoor conditions.**

## EVER-DECK

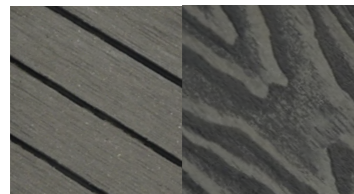


**DARK BROWN**

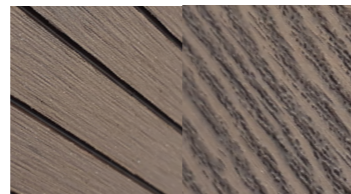


**GRAPHITE**

## EVER-DECK +PLUS

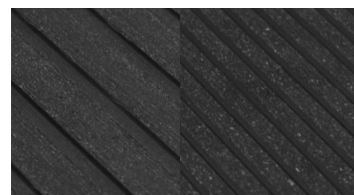


**SLATE GREY**

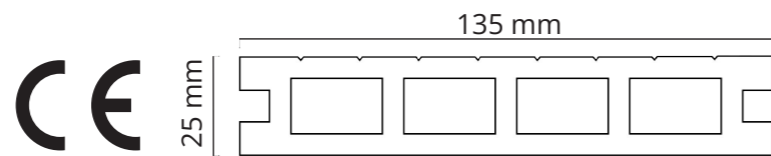


**CHESTNUT**

## EVER-DECK FR FIRE RATED DECKING



**GRAPHITE**



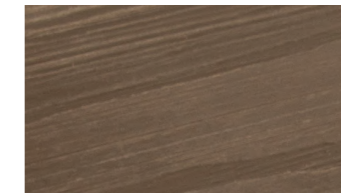
Weight: 2.52 kg/m 3.6 m long

- RESISTANT TO FUNGI,  
LICHENS AND INSECTS
- FIRE RATED
- RESISTANT TO UV RAYS
- GREAT VALUE
- NON-SLIP SURFACE
- WEATHER RESISTANT

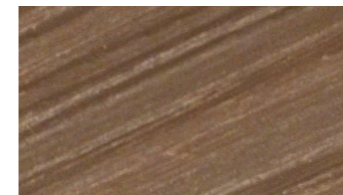
# EVER-SHIELD



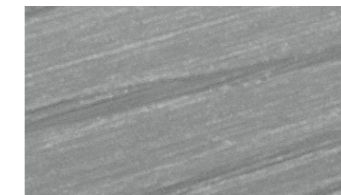
**MOCHA**



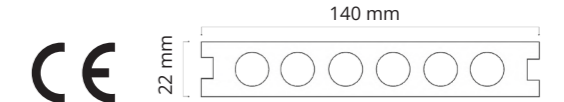
**WALNUT**



**TEAK**



**SILVER GREY**



Weight: 3.13 kg/m 3.6 m long

- CE**
- ECO-FRIENDLY**
- NATURAL WOOD LOOK**
- DIMENSIONAL STABILITY**
- PROVEN PERFORMANCE**
- LONGEVITY**
- INSTALL & MAINTAIN EASILY**

	PRODUCT	DESCRIPTION	CODE	SIZE	PALLET
<b>EVER-DECK</b>	DECKING BOARDS	DARK BROWN	FS-DEK-023DB	3.6m x 135mm	49
		GRAPHITE	FS-DEK-023GRA	3.6m x 135mm	49
	FIRE RATED DECKING	GRAPHITE	FS-DEK-050-DR	3.6m x 135mm	49
	WPC SEALED STRIP	DARK BROWN	ACC-07DB	2.2 l.m.	40
		GRAPHITE	ACC-07GRA	2.2 l.m.	40
	GAP KITS	METAL	KK-07-10	10m <sup>2</sup>	10
		METAL	KK-07-02	2m <sup>2</sup>	10
<b>EVER-DECK +PLUS</b>	DECKING BOARDS	SLATE GREY	FS-DEK-023CH	3.6m x 135mm	49
		CHESTNUT	FS-DEK-023CH	3.6m x 135mm	49
<b>EVER-SHIELD</b>	DECKING BOARDS	WALNUT	FS-DEK-C01WLN	3.6m x 140mm	49
		SILVER GREY	FS-DEK-C01LG	3.6m x 140mm	49
		TEAK	FS-DEK-C01TK	3.6m x 140mm	49
		MOCHA	FS-DEK-C01MOC	3.6m x 140mm	49
	ALU SEALED STRIP	WALNUT	ACC-C01WLN	2.2 l.m.	40
		SILVER GREY	ACC-C01LG	2.2 l.m.	40
		TEAK	ACC-C01TK	2.2 l.m.	40
GAP KITS	METAL	KK-08-10	10m <sup>2</sup>	10	
	METAL	KK-08-02	2m <sup>2</sup>	10	
COMPOSITE HOLLOW JOIST	SLATE GREY	ACC.02AB	50 x 30 x 3600mm	220	
ALUMINIUM JOIST	ALUMINIUM	ACC.03AB	50 x 40 x 3600mm	40	
STARTING CLIPS	Pack of 30	KK-05-10	N/A	10	
<b>RAILING</b>	RAILING KITS	DARK BROWN	NRL-02-DC	1.5m long	5
		GRAPHITE	NRL-02-AB	1.5m long	5
	POST KITS	DARK BROWN	NRL-01-DC	1.1m x 60mm	62
GRAPHITE		NRL-01-AB	1.1m x 60mm	62	

### ACCESSORIES



See Teranna Brochure for full details.

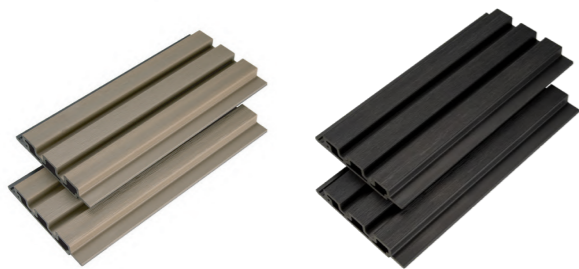
# Composite Fencing

**Teranna Composite Fencing** is the modern answer to this age-old dilemma faced by DIY enthusiasts and commercial builders alike. Practically every frustration commonly encountered with wood fencing is lifted with what is known as composite fencing, an innovative upgrade that will provide the same high level of enjoyment for years and years.

-   
**INSTALL & MAINTAIN EASILY**
-   
**MATERIAL QUALITIES**
-   
**OUTSTANDING APPEARANCE & FEEL**
-   
**LONGEVITY**
-   
**HIGH STRENGTH**
-   
**DIMENSIONAL STABILITY**

## FENCING BOARDS

**TERANNA**  
COMPOSITE FENCING

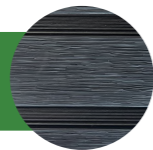


Fencing boards (3 per pack).  
Dimensions: 161.5 x 20 x 1790mm  
Available in Brown & Charcoal

BROWN

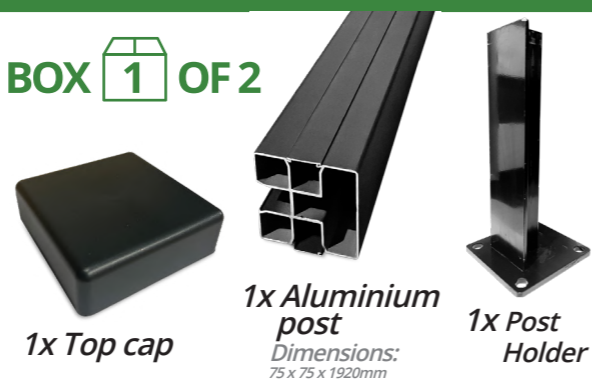


CHARCOAL



## POST KIT

BOX 1 OF 2

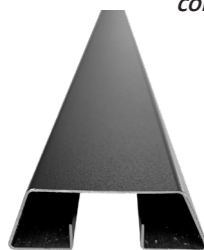


BOX 2 OF 2



## POST ADAPTOR KIT

Suitable for the retrofit of concrete H-posts  
2 per pack



## TOP & BOTTOM TRIM KIT

1x Top trim  
1x Bottom trim



## FENCE POST HOLDER STEEL

Dimensions:  
75 x 75 x 704mm



# Artificial Grass



## SAGE Artificial Grass

SAGE Artificial Grass feels like natural grass.

With its 35mm pile, SAGE is extremely durable, requires minimal maintenance and will withstand all weather conditions. Transform your space with SAGE!



## PERFECT GRASS WHATEVER THE WEATHER



Artificial Grass Adhesive and Seaming Tape  
More info on page 32

Product	Code	Size	Pallet/Box
SAGE Grass	730066	2m x 30m	1
SAGE Grass	730065	4m x 30m	1
SAGE Essential Grass	730067	2m x 30m	1
Astro Pro Adhesive	BDAPROGN	285ml	12
Astro Pro Seaming Tape	BDAST200	200mm x 100m	1
Grass Pegs U Shaped	730105	15 x 3.5cm	10



## ZERO MAINTENANCE & NATURAL LOOK



# Loft Ladders



## COMPLETE LOFT LADDER

Discreet insulated loft ladder

Complete loft ladder is made entirely of high quality materials. It features solid spruce stairs with 27 mm thick steps supporting up to 150 kg, and a 33 mm insulated hatch that delivers a U-value of 1.1 W/m<sup>2</sup>K.



## ECO C4 AIRTIGHT LOFT LADDER

Superior airtight loft ladder

The Eco Airtight C4 Loft Ladder is a solid wood, energy-efficient ladder with Class 4 airtightness, a 33 mm insulated hatch, two-point twist lock, and a U-value of 1.1 W/m<sup>2</sup>K for reduced heat loss.



## POLAR EXTRA LOFT LADDER

High-insulation loft ladder

Superior Insulation with a U-value of 0.645 W/m<sup>2</sup>K. Our advanced loft ladders block heat and cold. A seamless gasket ensures comfort and energy savings, even in extreme cold.



## POLAR EXTREME AIRTIGHT LOFT LADDER

Extreme insulated loft ladder

Insulation thicknesses up to 247 mm and U-values up to 0.14 W/m<sup>2</sup>K are a contribution to low energy consumption in your home.



## EUROFIRE PROTECT LOFT LADDER

Fire retardant loft ladder

EI<sub>2</sub>45 fire resistant loft ladder with 60 mm thick insulation cover and air tightness class 4. Tested to EN1363, EN1634, B3860.



## EXTENSION KIT LOFT LADDER

Extension for wooden stairs

Extension of wooden attic stairs by one step (+ 35 cm). Simply attach stair extension instead of bottom ladder element.

Product	Code	Pallet
Complete Loft Ladder 1200x550	504802	8
Complete Loft Ladder 1200x600	504801	8
Complete Loft Ladder 1200x700	504803	8
Eco C4 Airtight Loft Ladder 1200x550	30671	8
Eco C4 Airtight Loft Ladder 1200x600	30673	8
Eco C4 Airtight Loft Ladder 1200x700	30674	8
Polar Extra 60 Ladder 1200x550	10641	7
Polar Extra 60 Ladder 1200x600	10643	7
Polar Extra 60 Ladder 1200x700	10644	7
Polar Extreme Loft Ladder 1200x550	10651	6
Polar Extreme Loft Ladder 1200x600	10653	6
Polar Extreme Loft Ladder 1200x700	10654	6
Fire Protect Loft Ladder 1200x600	504810	7
Fire Protect Loft Ladder 1140x550	10601	7
Extension Kit	504806	20



**OMAN ladders** are designed with your safety, comfort, and convenience in mind. Built from FSC-certified wood and tested plastic components, every ladder is crafted to meet the highest safety standards while ensuring long-lasting durability.



## TERMO PS

Insulated Loft Ladder

Oman Loft Ladder Termo PS is a high quality basic loft ladder with insulated hatch with a U value of 1,22 W/m<sup>2</sup>\*K and hatch thickness 26mm The Termo PS ladder is perfectly suited for the attic that is insulated and does not require additional thermal insulation.



## LADDER EXTENSION

4-Section Ladder Extension

A 4-section ladder with a length of up to 3.1 min height. The PSS D-1 ladder is compatible with stairs with a minimum box length of 120 cm. It is incompatible with TERMO PS and EXTRA stair models in size 110, Polar in size 113 and MAXI in all sizes.

Product	Code	Pallet
Oman Termo PS Loft Ladder 1200x550mm	TSS10193	8
Oman Termo PS Loft Ladder 1200x6000mm	TSS10194	8
Oman Termo PS Loft Ladder 1200x700mm	TSS10195	8
4-Section Ladder Extension PSS D-1	TDSS10077	N/A

## ROOF SEAL

WATERPROOF HYBRID ROOF MEMBRANE

**ROOF SEAL Liquid Membrane** is available in an aesthetic **grey finish** and is compatible for use with almost all common roofing materials. This is a perfect waterproofing solution for new roofs as well as old roof refurbishment projects. ROOF SEAL offers a modern alternative to traditional GRP, PU, silicone and bitumen roof coatings.

ROOF SEAL is designed to be used on its own, or in conjunction with a primer, reinforcement mat and sealant, depending on project conditions.



### LIQUID MEMBRANE

Liquid Roof Waterproofing Membrane

Solvent-free, hybrid liquid waterproofing membrane for roofs. It's applied as a seamless coating that creates a durable, flexible, and fully waterproof barrier on a variety of roof surfaces. The product helps protect against water ingress, weathering and temperature changes and is designed for easy application in all weather conditions.

Product	Code	Size	Colour	CTN QTY
Liquid Membrane	BDSIR2GR	2.5L	Grey	6
Liquid Membrane	BDSIR5GR	5L	Grey	4
Liquid Membrane	BDSIR20GR	20L	Grey	1



### CRACK & EDGE SEALANT

Flexible Roof Crack Sealant

Seal It Cracks & Edging Sealer is a high-quality, flexible sealing compound designed for use with Seal It Liquid Membrane systems. It can be applied to wet surfaces, cures rapidly without shrinking, and provides excellent adhesion to most roofing materials. Ideal for filling cracks, gaps, edges, and roof details to create a durable, weatherproof base or finish.

Product	Code	Size	Colour	CTN QTY
Crack & Edge Sealant	BDOCRSSGR	285ml	Grey	12



### PRIMER

One Part, Solvent-Free Roof Primer

Seal-It Roof Seal Primer is a one-part, solvent-free primer used before applying a roof waterproofing membrane. It prepares and seals bitumen-based and felt surfaces to improve adhesion and prevent staining, helping the topcoat bond better and last longer.

Product	Code	Size	Colour	CTN QTY
Roof Seal Primer	BDOCRSP2	2.5L	Light Blue	6
Roof Seal Primer	BDOCRSP12	12.5L	Light Blue	1



### REINFORCING MAT

Heavy-duty reinforcement mat

Heavy-duty spunbond polyester reinforcement layer designed for use with liquid roofing membranes. It adds tear and puncture resistance, boosts strength by over 50% once cured, and provides rapid patch repairs for blisters, splits and tears in roof substrates before coating.

Product	Code	Size	Colour	CTN QTY
Reinforce Mat	BDOCRSM25	1m x 25m	White	1

## ROOF SEAL

WATERPROOF HYBRID ROOF MEMBRANE



### WATERPROOF HYBRID ROOF MEMBRANE

- ✓ UP TO 25 YEARS LIFESPAN
- ✓ SOLVENT-FREE, NON-FLAMMABLE
- ✓ REFLECTS HEAT IN SUMMER
- ✓ RAIN SAFE IN UNDER 1 HOUR



## INDUSTRIAL AND SUPER GLUES



### SUPER GLUE ACTIVATOR

#### Adhesive Activator

Super Glue Activator speeds up cyanoacrylate cure for instant bonds. Ideal for wood, metals, plastics. Easy to use; avoid damp uPVC to prevent discoloration.



### MITRE KIT ADHESIVE

#### Adhesive/Accelerator Twin Pack

High-strength twin pack: cyanoacrylate adhesive and aerosol activator for rapid curing on acid surfaces. Bonds wood, MDF, rubber, plastics. Fast, precise bonding in 10 seconds.



### A43 THREADLOCK

#### Medium Viscosity Compound

Medium-strength thread locker for lightly oiled parts. Replaces washers and lock nuts, prevents rust and corrosion. Non-drip formula ensures clean, efficient application and easy disassembly.



### A70 STUDLOCK

#### High Strength Adhesive

High-strength anaerobic adhesive for permanent sealing of threads, sleeves, and bearings. Resistant to fuels and oils. Lubricates during assembly for precise torque and corrosion protection.



### HVC CYANOACRYLATE GLUE

#### High Viscosity Adhesive

HVC Superglue bonds porous surfaces, rubber, plastics (including uPVC) with gap-filling. Sets in 10-30 seconds. Use with activator for improved performance.



### RGC CYANOACRYLATE GLUE

#### Medium Viscosity Adhesive

Fast-setting cyanoacrylate adhesive fills gaps up to 0.1mm. Bonds plastics, metals, glass, rubber, uPVC. Sets in 5-15 seconds. Use activator for better performance.

Product	Code	Size	Colour	Box
Super Glue Activator	BIC200	200ml	Clear	12
Super Glue Activator	BIC400	400ml	Clear	12
Mitre Kit Adhesive	BDMI	200ml+50g	Clear	12
Mitre Kit Adhesive	BDMI100	100ml+20g	Clear	18
A43 Threadlock	BIA4325	25ml	Blue	15
A43 Threadlock	BIA4350	50ml	Blue	15
A70 Studlock	BIA7025	25ml	Green	15
A70 Studlock	BIA7050	50ml	Green	15
HVC Cyanoacrylate Glue	HVC1620	20g	Clear	25
HVC Cyanoacrylate Glue	HVC1650	50g	Clear	20
RGC Cyanoacrylate Glue	RGC2420	20g	Clear	25
RGC Cyanoacrylate Glue	RGC2450	50g	Clear	20

## INDUSTRIAL AND SUPER GLUES



### SPRAY LUBRICANT

#### Solvent and Oil Blend

Low-viscosity aerosol with deep penetration. Provides de-watering, anti-corrosion, and lubrication. Ideal for rusted parts, locks, hinges, tools, and ignition systems. Protects against rust.



### SILICONE RELEASE

#### Low Toxicity Spray

Multi-use silicone spray: clean, low-toxicity lubricant. Reduces friction, stops squeaks. Ideal for automotive, food, upholstery, mould release, and home use. Flame-restricted valve included.

Product	Code	Size	Colour	Box
Spray Lubricant	BIMP400	400ml	Clear	12
Silicone Release	BISR500	500ml	Clear	12

## POLYURETHANE ADHESIVES



### MEGA STIK

#### Fast Cure Adhesive Foam

Low-expansion adhesive foam for fast plasterboard, insulation, and decking installation. No mixing or mess, saves 30% time, bonds without nails. Suitable for interior and exterior use.



### PU:05 AND PU:30

#### Moisture Cure Wood Glues

Acid-resistant solvent-free liquid and gel adhesives for interior/exterior use. Flexible, frost-resistant, ideal for wood, boats, furniture, insulation, and general construction bonding.

Product	Code	Size	Colour	Box
Mega Stik	BDEF750	750ml	Pale Orange	12
PU:05 & PU:30	BDAPU5	300ml	Translucent	12
PU:05 & PU:30	BDAPU375	750ml	Brown	16



## MEGA STIK

### High-Strength Expanding Adhesive



HIGH BOND STRENGTH



GUN-GRADE CONTROL



CONTROLLED EXPANSION



FAST CURING



MOISTURE CURING

## CONTACT ADHESIVES



### CONTACT ADHESIVE Neoprene Glue

Premium, toluene-free contact adhesive with high grab and repositioning time. Bonds wood, metal, rubber, plastics, and more. For interior use; limited exterior suitability.

Available Sizes:

250ML 500ML 850ML 5.0L

Product	Code	Size	Colour	Box
Contact Adhesive	BDA004	250ml	Beige	12
Contact Adhesive	BDA001	500ml	Beige	12
Contact Adhesive	BDA002	850ml	Beige	12
Contact Adhesive	BDA003L	5L	Beige	1

## FLOORING ADHESIVES



### FLOORBOND TS550 Wood Pro Hybrid Wood Adhesive

Universal flexible, one-part, moisture-cure wood floor adhesive. Solvent, silicone, and isocyanate-free. Bonds various wood types to porous/non-porous substrates. Compatible with underfloor heating.

**WOODPRO IN A TUB**  
Ultra-Strong, Flexible & Fast-Drying Adhesive For Solid & Engineered Wood Flooring

- STRONG BOND
- MOISTURE FREE
- FAST-DRYING

Product	Code	Size	Colour	Box
Floorbond TS550	BDTS55	10L	Beige	1
Floorbond TS550	BDTS556	600ml	Beige	12
Floorbond TS550	BD600SG	600ml	Sausage Gun	1



### ECO EXTREME Solvent-Free Adhesive

Eco Extreme is a low-odour, VOC-free adhesive with instant grab, strong bond, water clean-up, and safe use on most porous and nonporous surfaces.



### GRIPBOND WHITE Solvent-Free Adhesive

Gripbond White is a premium, solvent-free adhesive with strong initial grab. Ideal for interior use on wood, metal, tiles, drywall, concrete, and more.



### GRIPBOND Construction Adhesive

Gripbond is a fast-bonding, solvent-based adhesive for interior/exterior use. Ideal for rough surfaces, it replaces fixings and bonds wood, metal, cladding, and more.



### GBX Hybrid Sealant & Adhesive

High modulus and permanently flexible. Suitable for interior/exterior sealing and bonding in all weather. Can be overpainted with water-based paints

Product	Code	Size	Colour	Box
Eco Extreme	BDEX350	350ml	White	12
Gripbond White	BDGBSF	350ml	White	12
Gripbond	BDGBBR	350ml	Beige	24
GBX	BDGBXCL	290ml	Clear	12
GBX	BDGBXWH	290ml	White	12
GBX	BDGBXBL	290ml	Black	12
GBX	BDGBXAN	290ml	Anthracite	12



### GRIPBOND PRO Premium Adhesive & Sealant

A high-quality, one-part sealant and adhesive forming tough, elastic joints. Bonds most materials, waterproof, durable, and suitable for both internal and external use.



### GRIPBOND PRO MAX Maximum Strength Adhesive

Gripbond Pro Max is a high-strength, fast-curing grab adhesive with double initial grab. Bonds most materials, even wet surfaces. Solvent-free, for all-weather use.



### THE ONE Silicone Sealant

The One is a low modulus neutral cure silicone sealant. This product is ideal for use in sanitary, window frame, ducting, high temperature and natural stone applications.

Product	Code	Size	Colour	Box
Gripbond Pro	BDMSPWH	285ml	White	12
Gripbond Pro	BDMSPCL	285ml	Clear	12
Gripbond Pro	BDMSPBL	285ml	Black	12
Gripbond Pro	BDMSPGR	285ml	Grey	12
Gripbond Pro Max	BDPPROWH	285ml	White	12
The One	BDGISTWH	310ml	White	12
The One	BDGISTT	310ml	Translucent	12

## SPECIALIST ADHESIVES



### ANCHOR BOND

#### Chemical Anchoring System

Single-pack Styrene free adhesive for rapid curing. Ideal for fixing bolts, studs, screws, and wall ties. Creates strong, load-spreading bonds in various substrates.



### AEROSOL SPRAY ADHESIVE

#### Strong DCM-Free Aerosol

Non-chlorinated, strong multi-purpose adhesive spray. Ideal for carpet tiles, minor flooring, foam bonding in furniture and automotive. Provides high-strength, non-structural bonds for indoor/outdoor use.



### ASTRO PRO

#### Artificial Grass Adhesive

Tough, elastic hybrid adhesive for artificial grass installation. Bonds well in all weather, even wet surfaces. Rapid curing, flexible, ideal for indoor/outdoor use and repairs.



### ASTRO PRO

#### Artificial Grass Adhesive Tape

Astro Pro Seaming Tape is a strong, rot-resistant laminated geotextile for joining artificial grass. Waterproof backing and open surface ensure durable, moisture-proof bonds.



### CARPET PROTECTOR

#### Carpet Protecting Self-Adhesive

Protects against costly damage to most surfaces. - Easy application, simply unwind and cover-it. Waterproof, good against paint and liquid spillages.



### HARDFLOOR PROTECTOR

#### Hardfloor Protecting Self-Adhesive

Protects against mess, dirt, spillages and staining, etc. whilst painting and decorating, plastering, tiling and general building and maintenance projects.

Product	Code	Size	Colour	Box
Anchor Bond	BDAB310SF	300ml	Grey	10
Anchor Bond	BDAB400SF	400ml	Grey	12
Anchor Bond Gun	BDABG3 Gun	400ml	Blue	1
Aerosol Spray Adhesive	BDA007	500ml	Beige	12
Astro Pro Adhesive	BDAPROGN	285ml	Green	12
Astro Pro Seaming Tape	BDAST200	200mm x 100m	White	1
Cover-It Carpet Protector	BDCICP25	600mm x 25m	Translucent	24
Cover-It Carpet Protector	BDCICP50	600mm x 50m	Translucent	15
Cover-It Hardfloor & Glass Protector	BDCIHP25	600mm x 25m	Blue	24
Cover-It Hardfloor & Glass Protector	BDCIHP50	600mm x 50m	Blue	15

## WOOD ADHESIVES



### DUO "2 IN 1" WOOD GLUE

#### Water Resistant Wood Adhesive

Fast-drying, water-resistant PVA adhesive stronger than wood. Bonds hardwood, laminates, chipboard. Ideal for humid or wet areas like kitchens and windows. Interior and exterior use.



### MONSTER THE BEAST

#### Strong, Solvent-Free Adhesive

The Beast is a solvent-free, moisture-curing D4 polyurethane adhesive. High strength, flexible, waterproof, rapid-setting for bonding wood, metal, glass, stone, and more—indoor and outdoor use.

Product	Code	Size	Colour	Box
Duo 2 in 1 Wood Glue	BDA050	125ml	White	24
Duo 2 in 1 Wood Glue	BDA051	250ml	White	12
Duo 2 in 1 Wood Glue	BDA052	500ml	White	20
Duo 2 in 1 Wood Glue	BDA053	1L	White	12
Duo 2 in 1 Wood Glue	BDA054	2.5L	White	4
Duo 2 in 1 Wood Glue	BDA055	5L	White	4
Duo 2 in 1 Wood Glue	BDA056	25L	White	1
Duo 2 in 1 Wood Glue	BDA057	200L	White	1
Monster The Beast	BDAPU150	125ml	Brown	12
Monster The Beast	BDAPU250	250ml	Brown	9
Monster The Beast	BDAPU500	500ml	Brown	6

## SILICONES & SEALANTS

### RAIN-MATE ALL WEATHER SEALANT

#### Water Repellent Sealant

A highly flexible, water repellent, general purpose sealant that has excellent adhesion to all surfaces, even when damp. This product can be over-painted with certain paints and it will not crack or slump or become brittle with age.



Product	Code	Size	Colour	CTN
Rain-Mate All Weather Sealant	BDAWSBL	285ml	Black	25
Rain-Mate All Weather Sealant	BDAWSBL12	285ml	Black	12
Rain-Mate All Weather Sealant	BDAWSCL	285ml	Clear	25
Rain-Mate All Weather Sealant	BDAWSCL12	285ml	Clear	12
Rain-Mate All Weather Sealant	BDAWSWH	285ml	White	25
Rain-Mate All Weather Sealant	BDAWSCL12	285ml	White	12

## DIY SEALANTS



### GP200 GENERAL PURPOSE SILICONE

Silicone Sealant with Fungicide  
GP 200 is a quick-curing, mould-resistant acetoxysilicone sealant with fungicide. Ideal for bathrooms, kitchens, and general sealing. Available in 4 colours; not for mirrors or stone.



### MULTI-MATE MULTI-PURPOSE SILICONE

Multi-Purpose Silicone  
High-modulus, fungicide-containing silicone sealant. Flexible, fast-skinning, waterproof, and durable with 20-year lifespan. Ideal for humid areas; bonds glass, tiles, plastics, and paint.

Product	Code	Size	Colour	Box
GP200 General Purpose Silicone	BDSVBL	275ml	Black	25
GP200 General Purpose Silicone	BDSVBR	275ml	Brown	25
GP200 General Purpose Silicone	BDSVT	275ml	Translucent	25
GP200 General Purpose Silicone	BDSVWH	275ml	White	25
Roof-Mate Roof & Gutter Sealant	BDGR	275ml	Black	25
Multi-Mate Multi-Purpose Silicone	BDMGR	275ml	Grey	25



### ULTI-MATE BUILDERS SILICONE

Builders Silicone  
Ulti-Mate is a neutral cure silicone sealant with primer less adhesion. Ideal for doors, windows, mirrors, joints, and general maintenance. Durable, flexible, interior/exterior, 25-year lifespan.



### LAMI-MATE TIMBER/LAMINATE SEALANT

Flexible Sealant and Gap-Filler  
Flexible, polymer-enhanced sealant for laminate/hardwood flooring and timber frames. Stainable, airtight, dustproof, with 20-year lifespan. Ideal for interior use and furniture sealing.

Product	Code	Size	Colour	Box
Ulti-Mate Builders Silicone	BDUBL	285ml	Black	25
Ulti-Mate Builders Silicone	BDUBR	285ml	Brown	25
Ulti-Mate Builders Silicone	BDUGR	285ml	Grey	25
Ulti-Mate Builders Silicone	BDUT	285ml	Translucent	25
Ulti-Mate Builders Silicone	BDUWH	285ml	White	25
Lami-Mate Timber & Laminate Sealant	BDLSOK	285ml	Oak	12
Lami-Mate Timber & Laminate Sealant	BDLSPN	285ml	Pine	12
Lami-Mate Timber & Laminate Sealant	BDLSDO	285ml	Dark Oak	12



### DEC-MATE FLEXIBLE FILLER

Quick Drying Flexible Filler  
Dec-Mate is a quick-drying, flexible interior filler for gaps and cracks. Smooths and over-paints in 1-2 hours. Suitable for various surfaces with 10-year lifespan.



### ROOF-MATE ROOF & GUTTER SEALANT

Reinforced Lap Jointing Sealant  
Polymer-reinforced lap joint sealant and adhesive for flexible, long-lasting leak prevention in gutters and downpipes. Suitable for metal, plastics, timber, brick, asphalt. External use, 15-year lifespan.

Product	Code	Size	Colour	Box
Dec-Mate Flexible Filler	BDDF400	350ml	High White	25
Roof-Mate Roof & Gutter Sealant	BDGR	285ml	Black	25

## FIRE RATED SEALANTS



### FS4 FIRESHIELD AC SEALANT

Intumescent Sealant  
FS4 is a flexible intumescent acoustic sealant that swells to block smoke and flames. Rapid skinning, paintable, fire-rated, for interior floor, ceiling, and partition joints.



### LN11 FIRESCREEN SEALANT

Fire-Resistant Silicone Sealant  
LN11 is a fire-resistant silicone sealant for engineered movement joints, preventing flame, smoke, and toxic gases spread. Halogen-free, neutral cure, highly flexible with excellent adhesion.

Product	Code	Size	Colour	Box
FS4 Fireshield AC Sealant	BDFWH	285ml	White	25
LN11 Firescreen Sealant	BDLN11	310ml	White	12



### HT30 HIGH TEMPERATURE SILICONE

Heat Resistant Sealant  
HT30 is a high-temperature, UV-resistant silicone sealant. Withstands up to 300°C. Ideal for internal/external joints on metals, nylon, ABS, and polyester. 25-year lifespan.



### FG8 FOOD GRADE SILICONE

Food Grade Silicone  
FG8 is a food-grade silicone sealant with antifungal protection. FDA and NSF approved, ideal for kitchen, machinery, and refrigeration joints. 25-year lifespan, 25% movement.

Product	Code	Size	Colour	Box
HT30 High Temperature Silicone	BDHT30R	310ml	Red	12
HT30 High Temperature Silicone	BDHT30BL	310ml	Black	12
FG8 Food Grade Silicone	BDFG8WH	310ml	White	12

## TRADE & SPECIALIST SEALANTS



### LN7 LMN SILICONE

Pure Silicone  
LN7 is a 100% neutral cure silicone sealant with no corrosive vapours. Bonds most materials. Ideal for construction, engineering, and electrical use. 25-year lifespan.



### PU18 ADHESIVE & SEALANT

Polyurethane Adhesive & Sealant  
PU18 is a moisture-curing polyurethane adhesive/sealant for construction and transport. Tough, elastic, vibration-dampening. Bonds wood, metal, concrete, GRP. Oil-resistant, 25-year lifespan, internal/external use.

Product	Code	Size	Colour	Box
LN7 LMN Silicone	BDLN7AL	310ml	Aluminium	12
LN7 LMN Silicone	BDLN7BL	310ml	Black	12
LN7 LMN Silicone	BDLN7T	310ml	Translucent	12
LN7 LMN Silicone	BDLN7WH	310ml	White	12
PU18 Adhesive & Sealant	BDPU18BL	310ml	Black	12
PU18 Adhesive & Sealant	BDPU18GR	310ml	Grey	12
PU18 Adhesive & Sealant	BDPU18WH	310ml	White	12



## S3 SANITARY SEALANT

### Fungal Resistant Silicone Sealant

S3 is a premium, mould-resistant silicone sealant with strong biocide. Ideal for sealing in humid areas—worktops, sinks, basins, showers.



## AS900 ACOUSTIC SEALANT

### Acrylic Joint Filler

AS900 is a flexible acrylic joint filler and acoustic sealant. Ideal for drywall partitioning, reducing noise, vibration, and movement. Excellent adhesion. Interior use, 25-year lifespan.



## WP70 GLAZING SILICONE

### Rapid Curing Oxime Silicone

WP70 is a rapid-curing silicone for external sealing of wood, aluminium, and uPVC frames. Strong adhesion, weather-resistant, non-paintable.



## WP100 GLAZING SILICONE

### High Grade Oxime Silicone

WP100 is a fast-curing neutral silicone for external sealing of wood, aluminium, uPVC frames, and panels. Strong adhesion, non-paintable. CE Approved.

Product	Code	Size	Colour	Box
S3 Sanitary Sealant	BDS3T	285ml	Translucent	25
S3 Sanitary Sealant	BDS3WH	285ml	White	25
S3 Sanitary Sealant	BDS3IV	285ml	Ivory	25
AS900 Acoustic Sealant	BDAS900	285ml	White	12
WP70 Glazing Silicone	WP70WH	285ml	White	25
WP100 Glazing Silicone	WP100ANT	285ml	Anthracite	25
WP100 Glazing Silicone	WP100BL	285ml	Black	25
WP100 Glazing Silicone	WP100BR	285ml	Brown	25
WP100 Glazing Silicone	WP100RW	285ml	Rosewood	25
WP100 Glazing Silicone	WP100T	285ml	Translucent	25
WP100 Glazing Silicone	WP100WH	285ml	White	25
WP100 Glazing Silicone	WP100CR	285ml	Cream	25

## GUNS AND ACCESSORIES



### ECONOMY SEALANT GUN

An economy extruder gun for use with all cartridge products. Manufactured in the UK, it features an anti-drip release and an epoxy-coated frame.



### PRO PLUS GUN

A heavy duty, high quality 10.5" (400ml) metal extruder for use with larger cartridge products. The Pro Plus Gun features robust construction and has a



### SAUSAGE GUN

Designed for use with 600ml (15") foil packs/sausages, the enclosed aluminium barrel can also be used with standard cartridges.

Product	Code	Size	Colour	Box
Economy 400ml Sealant Gun	BDCG400	400ml	Blue	24
Economy 900ml Sealant Gun	BDCG900	900ml	Blue	12
Pro Plus Gun	BDHDG	400ml	Blue	12
Sausage Gun	BD600SG	600ml	Silver	1

## BUILDING CHEMICALS AND ADMIXTURES



### MORTAR PLASTICISER

Extra Strength Additive for All Portland Cements

A synthetic air-entraining plasticiser improving mortar workability, freeze-thaw resistance, and reducing cracking. Eliminates lime in cement mixes. Available - red or brown liquid.



### CONTRACTORS GRADE PVA

Primer, Sealer and Bonding Agent

All-purpose contractor's primer, sealer, and bonding agent. Dries quickly for high bond strength. Ideal for plaster, timber, gypsum boards, and paper. Dilutable for sealing or as an additive.

Product	Code	Size	Colour	Box
Liquid Mortar Plasticiser	BDH010	5L	Red	4
Liquid Mortar Plasticiser	BDH011	25L	Red	1
Liquid Mortar Plasticiser	BDH012	200L	Red	1
Liquid Mortar Plasticiser	BDH015	5L	Brown	4
Liquid Mortar Plasticiser	BDH016	25L	Brown	1
Liquid Mortar Plasticiser	BDH017	200L	Brown	1
Contractors Grade PVA	BDAC05	500ml	White	20
Contractors Grade PVA	BDAC1	1L	White	12
Contractors Grade PVA	BDAC2	2.5L	White	4
Contractors Grade PVA	BDAC5	5L	White	4
Contractors Grade PVA	BDAC25	25L	White	1
Contractors Grade PVA	BDAC200	200L	White	1



### STABILIZING SOLUTION

Water-Based Bonding and Priming Agent

White, ready-to-use water-based primer that stabilizes and seals chalky, porous surfaces. Suitable for most substrates, quick drying. Avoid use below 5°C or before rain/frost.



### WATER RESISTANT PLASTICISER

Plasticity Improver for Mortars and Renders

High-strength cement waterproofing improves workability and plasticity. Resists water penetration. Use for rendering, pools, tanks, walls. Add 0.25-0.5L per 25kg cement.

Product	Code	Size	Colour	Box
Stabilizing Solution	BDH130	5L	White	4
Water Resistant Plasticiser	BDH020	5L	Pink	4
Water Resistant Plasticiser	BDH021	25L	Pink	1
Water Resistant Plasticiser	BDH022	200L	Pink	1
Water Resistant Plasticiser	BDH200	5L	Green	4
Water Resistant Plasticiser	BDH201	25L	Green	1
Water Resistant Plasticiser	BDH202	200L	Green	1



### SBR ADMIXTURE

Bonding & Waterproofing Aid

Styrene butadiene latex improves flexibility, water and chemical resistance in cement screeds and mortars. Suitable for floors, rendering and bonding new to old concrete.



### PVA ADHESIVE AND SEALER

Adhesive, Sealer & Primer

PVA Bond sealer, primer, dustproof improves adhesion, reduces cracking. Primes porous surfaces, quick drying, water-resistant, flexible.

Product	Code	Size	Colour	Box
SBR Mixture	BDH039	2.5L	White	4
SBR Mixture	BDH040	5L	White	4
SBR Mixture	BDH041	25L	White	1
SBR Mixture	BDH042	200L	White	1
PVA Adhesive and Sealer	BDA021	500ml	White	20
PVA Adhesive and Sealer	BDA022	1L	White	12
PVA Adhesive and Sealer	BDA024	2.5L	White	4
PVA Adhesive and Sealer	BDA023	5L	White	4
PVA Adhesive and Sealer	BDA025	25L	White	1
PVA Adhesive and Sealer	BDA026	200L	White	1



## POWER MIX

Concentrated Plasticizer

Premium concentrated mortar plasticizer improving bricklaying and plastering workability. Increases freeze-thaw resistance, reduces cracking, removes lime need. 1L treats 250 bags of cement.



## POWER FROST

Concentrated Frostproof

Fast-acting frostproof and accelerator boosts frost resistance, speeds concrete setting. Add 500ml/25kg cement, reduce water 15%. Chloride-free, non-corrosive, safe for steel. 5x stronger than standard.



## POWER PROOF

Concentrated Waterproof

Power Proof is a professional waterproofing additive for concrete and render. Mix 25-50ml per 25kg cement. Chloride-free, non-corrosive, 10x stronger than standard waterproofers. EN934-3 compliant.



## PLASTERERS PREGRIT

Internal Plaster Bonding Agent

Pre-mixed internal plaster bonding agent with aggregate. Provides strong key for plaster on smooth, low-porous surfaces. Pigmented pale yellow for easy identification. Internal use only.



## EXTERIOR PREGRIT

Extra Grip Render Bonding Agent

Pre-mixed internal plaster bonding agent with aggregate. Provides strong key for plaster on smooth, low-porous surfaces. Pigmented pale yellow for easy identification. Internal use only.



## WIDE GAP JOINT-FILL

All-Weather, Paving Compound

Power Proof is a professional waterproofing additive for concrete and render. Mix 25-50ml per 25kg cement. Chloride-free, non-corrosive, 10x stronger than standard waterproofers. EN934-3 compliant.



## READY MIX FILLER

Domestic Repair Filler

All-purpose ready-mixed filler for internal and external repairs. Crack-resistant, smooth finish. Can be sanded, painted, papered, or stained. Fills gaps in plaster, brick, stone, and more.



## POWDERED CEMENT DYE

Cement Powder Colour

Cement colour with premium oxide pigments. Add 5kg dye per 25kg cement before water. Vary dosage for strength. Chloride-free. Test small area first.



## LINE IT MARKER PAINT

Resin Line Paint

Hard-wearing, fast-drying floor line paint with excellent UV stability. CFC-free, non-clogging, lasts up to 3 months. Use indoors/outdoors on asphalt, concrete, wood, gravel.



## POT HOLE REPAIRER

Cold Lay Asphalt Repair Compound

Ready-to-use bitumen-based pot hole repair for roads, pavements, and car parks. Instantly trafficable in wet, freezing, or hot conditions. No water or mixing required. Up to 100mm depth.



## ONE HIT WONDER

Ready Mixed Lightweight Filler

Ready-mixed filler for holes and gaps in one application. Provides smooth, white finish with no sanding. Non-slumping, shrink resistant. For plaster, concrete, brick, wood, stone.



## ONE PART WOOD FILLER

Waterproof Ready Mixed Filler

One-part, solvent-free wood filler for small imperfections (up to 5mm). Fills nail and screw recesses. Ideal for windowsills, frames, banisters, MDF, laminates, and wet rot repairs inside and out.

Product	Code	Size	Colour	Box
Power Mix	POVM1	1L	Brown	10
Power-Frost	POWF1	1L	Blue	10
Power-Proof	POWP1	1L	Pink	10
Ready Mix Filler	BDRMF750	750g	White	12
Powdered Cement Dye	BDH060BL	1kg	Black	6
Powdered Cement Dye	BDH060BR	1kg	Brown	6
Powdered Cement Dye	BDH060R	1kg	Red	6
Powdered Cement Dye	BDH060Y	1kg	Yellow	6
Powdered Cement Dye	805511	12.5kg	Black	1
Powdered Cement Dye	805514	5kg	Black	1
Powdered Cement Dye	805525	12.5kg	Dark Brown	1
Powdered Cement Dye	805547	12.5kg	Buff	1
Line It Marker Paint	BDLM001	750ml	Yellow	12
Line It Marker Paint	BDLM002	750ml	White	12
Line It Marker Paint	BDLM003	750ml	Red	12
Line It Marker Paint	BDLM004	750ml	Blue	12
Line It Marker Paint	BDLM005	750ml	Green	12
Line It Marker Paint	BDLM006	750ml	Orange	12

Product	Code	Size	Colour	Box
Plasterers Pregrit	BDPG05	5L	Pale Yellow	1
Plasterers Pregrit	BDPG10	10L	Pale Yellow	1
Plasterers Exterior Pregrit	BDEPG10	10L	Green	1
Wide Gap Joint-Fill	BDJC15	15kg	Buff	1
Wide Gap Joint-Fill	BDJC15GR	12kg	Grey	1
Wide Gap Joint-Fill	BDJC12BL	12kg	Black	1
Pot Hole Repairer	BDPHR25	25kg	Black	1
One Hit Wonder	BDLWF05	500ml	White	12
One Hit Wonder	BDLWF1	1L	White	6
One Part Wood Filler	BDWF1PN	250ml	Pine	6
One Part Wood Filler	BDWF1WH	250ml	White	6
One Part Wood Filler	BDWF1LO	250ml	Light Oak	6
One Part Wood Filler	BDWF1DO	250ml	Dark Oak	6
One Part Wood Filler	BDWF1TK	250ml	Teak	12

# Building Products

# Surface Treatments



## TWO PART WOOD FILLER

### Polyester Resin Filler

Long-lasting wood repair formula; stain, paint, or varnish after curing. Sandable in 30 minutes; drill, nail, plane, or carve when dry. Non-shrinking. Ideal for wood filling and wet rot repairs, internal and external.



## UNIVERSAL BUILDING RENDER

### Pre-Mixed Cement Render

One-coat, moderate strength render for moderate backgrounds and exposure. Weather-resistant, breathable, tough, flexible, with excellent adhesion. Suitable for internal and external brickwork and concrete.

Product	Code	Size	Colour	Box
Two Part Wood Filler	BDWF2PN	500g	Translucent	25
Two Part Wood Filler	BDWF2WH	500g	White	25
Two Part Wood Filler	BDWF2LO	500g	Ivory	25
Two Part Wood Filler	BDWF2DO	500g	White	12
Two Part Wood Filler	BDWF2TK	500g	Anthracite	25
Universal Building Render	BDER25	25kg	Black	25



## BRICK PATIO CLEANER

### Premium Hard Surface Acid Cleaner

Powerful acid-based cleaner for exterior use. Removes cement, mortar splashes, grime, oil, grease from brickwork, patios, garages, paving, concrete floors, warehouses. Apply, wait, scrub, rinse.



## DUST PROOFER & HARDENER

### Premium Quality, Low Viscosity Concrete Sealer

High-quality, chloride-free liquid that seals concrete, creating a hard, non-dusty surface for floors. Apply thin coats, brushing well; suitable for internal and external use.



## FROST PROOFER & HARDENER

### Protection for Bricklaying Rendering at Low Temps

High-performance chemical that boosts frost resistance and speeds cement setting by enhancing hydration. Ideal for bricklaying/rendering in cold conditions. Chlorine-



## RENDER MESH

### Lightweight Render Mesh

For the prevention of cracking in render and plasterwork and for the reinforcement of waterproof membranes, felts and similar roofing materials.



## CEM-QUIK MORTAR

### Premium Rapid Set Mortar

Fast-setting cement-based repair for interior and exterior use. Sets in 30 minutes. Ideal for patching masonry, filling cracks, sealing pipes, and bedding fixtures.

Product	Code	Size	Colour	Box
Cem-Quik Rapid Set Mortar	BDCMQ3	3kg	Grey	25
Cem-Quik Rapid Set Mortar	BDCMQ5	5kg	Grey	25
Render Mesh	BDRENM	50m x 1m	Pink	25



## MOULD STOP

### Powerful Mould-Removing Agent

Premium-grade cleaner removing mould, mildew, algae, and organic growth. Suitable for internal/external use on brick, stone, wood, roofing, decking, garden furniture, and fabric awnings.



## SILICONE WATERSEAL

### Premium Water Repellent

Waterseal repels water from exterior masonry, allowing walls to breathe and preventing frost damage. It doesn't alter appearance, resists dirt and fungi, improving energy efficiency.



## SILICONE ULTRA WATERSEAL

### Solvent-Free Silicone

Premium, solvent-free silicone water repellent for exterior masonry. It seals yet allows vapor emission, protecting surfaces from water, frost, dirt, and fungal growth.



## FIRE CEMENT

### Ready-Mixed Cement

Buff-coloured, putty-like cement sets with air and heat, resists up to 1250°C. For interior high-heat surfaces like firebacks, flues, grates, and stove repairs.

Product	Code	Size	Colour	Box
Fire Cement	BDCF002	2kg	Buff	6
Fire Cement	BDCF005	5kg	Buff	1
Fire Cement	816989	1kg	Buff	12
Fire Cement	816996	300ml	Black	12
Fire Cement	816991	0.5kg	Black	24
Fire Cement	816992	1kg	Black	12
Fire Cement	816993	2kg	Black	6
Fire Cement	816994	5kg	Black	1
Fire Cement	816995	10kg	Black	1

# FIRE CEMENT

- Withstands Up To 1,250°C**
- Seals & Repairs Fireplaces & Stoves**
- No Mixing – Ready To Use**

Product	Code	Size	Colour	Box
Brick Patio Cleaner	BDH080	2.5L	Clear	4
Brick Patio Cleaner	BDH081	5L	Clear	4
Brick Patio Cleaner	BDH082	25L	Clear	1
Brick Patio Cleaner	BDH083	200L	Clear	1
Dust Proofer & Hardener	BDH090	5L	Clear	4
Dust Proofer & Hardener	BDH091	25L	Clear	1
Dust Proofer & Hardener	BDH092	200L	Clear	1
Frost Proofer & Hardener	BDH030	5L	Light Blue	4
Frost Proofer & Hardener	BDH031	25L	Light Blue	1
Frost Proofer & Hardener	BDH032	200L	Light Blue	1
Mould Stop	BDH071	1L	Clear	12
Mould Stop	BDH073	2.5L	Clear	4
Mould Stop	BDH070	5L	Clear	4
Silicone Waterseal	BDH050	5L	Clear	1
Silicone Waterseal	BDH051	25L	Clear	1
Silicone Ultra Waterseal	BDH120	5L	Clear	4

# Outdoor Surface Care



## PATIO SEAL Premium Grade Sealer

Protects blocks, patios, and sand joints from water, oil, petrol, grease, dirt, and grime. Apply 1-2 coats on dry surfaces; avoid rain and high humidity until fully dry.



## INDIAN STONE SEAL Advanced Floro Polymer

Seals and protects natural stone patios from water and oil. Easy-clean surface prevents fungal and moss growth. Apply with brush, roller, or squeegee. Durable, color-safe coating.

Product	Code	Size	Colour	Box
Patio Seal	BDH061	5L	White	4
Patio Seal	BDH063	25L	White	1
Indian Stone Seal	BDIS55	5L	Clear	4



## PATIO BLASTER Concentrated Disinfectant

Removes & prevents green mould, lichens, algae on hard surfaces. Three-step system: dilute, apply, dry. Use on patios, driveways, decking, brickwork, garden furniture. Biodegradable, antibacterial.



## DECKING CLEANER Solution for Timber Decking

Cleans and revives weathered wood decking. Removes dirt and organic growth. Apply directly, scrub with stiff brush, leave 15-20 minutes. Prepares timber for stains and oils.

Product	Code	Size	Colour	Box
Patio Blaster	BDH108	2.5L	Clear	4
Patio Blaster	BDH109	5L	Clear	4
Decking Cleaner	BDDCL5	5L	Clear	4



## MOULD RELEASE OIL Chemical Release Agent

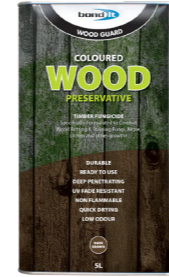
Chemical release agent for mould and shutter surfaces before casting concrete. Use on plywood, timber, steel, and plastic formwork for smooth, blow-hole-free finishes. Apply with brush.



## PATINATION OIL Protective Lead Coating

Protective coating for new and restored leadwork to prevent staining below. Apply promptly after leadwork with a soft cloth, working top to bottom. Coverage: 60m<sup>2</sup>/L. External use only.

Product	Code	Size	Colour	Box
Mould Release Oil	BDH150	5L	Straw	1
Mould Release Oil	BDH151	25L	Straw	1
Patination Oil	BDPO05	500ml	Straw	10
Patination Oil	BDPO1	1L	Straw	10



## COLOURED WOOD PRESERVER

Wood preserving fungicide

Protects against wood rot and decay with a deep-penetrating fungicide formula. Durable UV fade-resistant colour, low odour, quick drying, non-flammable, and water-based.



## DECKING OIL

Protective Oil Barrier for Decking

Ready-to-use oil that nourishes and protects wood, restoring natural oils lost to weathering. Provides water, UV protection, and prevents mold on all garden decking.



## HIGH STRENGTH BRICK ACID

Hydrochloric Acid Cleaner

Double strength hydrochloric acid cleaner for removing cement and mortar splashes from brickwork, paving, and concrete. Dilute, apply, scrub, and rinse. Test small area first.

Product	Code	Size	Colour	Box
Coloured Wood Preserver	BDWDPDB	5L	Dark Brown	1
Decking Oil	BDDOC2	2.5L	Natural	1
Decking Oil	BDDOC5	5L	Natural	1
High Strength Brick Acid	BDH085	5L	Clear	1
High Strength Brick Acid	BDH086	25L	Clear	1

## WATERPROOFING



## PLUG-IT Rapid Setting Cement Plug

Rapid-setting cement compound for plugging running water leaks and coating joints before Bond It Tanking Slurry. Mix with water, apply, cures in under 2 minutes. Interior/exterior use.



## TANKING SLURRY Waterproof Cement Based Coating

Cementitious waterproof coating for below and above ground use on tanks, walls, pools, and cellars. WRAS approved, water-based, adheres well, resists up to 7 Bar water pressure.

Product	Code	Size	Colour	Box
Plug-It	BDH106	5kg	Grey	1
Tanking Slurry	BDH107	20kg	Grey	1

## CLEANERS



## MONSTER WIPES Heavy Duty Strength Wipes

Effective cleaner for paint, adhesives, foam, grease, and more. Comes in resealable tub with dual-action pads. No water or towels needed. Contains soothing Aloe Vera.



## MULTI WIPES Multi-Purpose Trade Wipes

Multi Wipes clean and sanitise hands, tools, and surfaces. Remove paint, adhesive, foam, grease. Aloe Vera soothes skin. Available as wipes or spray for tough stains.

Product	Code	Size	Colour	Box
Multi Wipes	BDHW80	100 wipes	White	6 (75 wipes)
Monster Wipes	BDHDHW	200 X 270mm	Orange	6 (75 wipes)



### BI FOAM

Fire Resistant PU Foam

Fire-rated, high-performance foam for windows, doors, and cavities. Provides thermal and acoustic insulation. Use internally or externally between +5°C and +25°C. Resistant -40°C to +100°C. Aerosol and gun grade available.

Product	Code	Size	Colour	Box
B1 Foam	BDEFR750	750ml	Pink	12
B1 Foam	BDEFRG750	750ml	Pink	12
Professional Gun	BDAG1	Universal	Silver	1
MGF Ultra Yield PU Foam	BDMGF500	500ml	Yellow	12



### PROFESSIONAL GUN

Pro Quality PU Foam Applicator

Top-quality metal PU foam gun for professionals. Features steel ball valve and variable extrusion rate. Also available in 1m length for specialist, long-reach roofing jobs.



### MGF ULTRA YIELD PU FOAM

High yield assembly foam

Bonds, fills, seals and insulates most construction materials, which has a reaction to fire rating of class B3 (DIN4102:1). The fresh foam adheres to wood, concrete, block, stone, plaster, metal, PVC and polystyrene.



### FOAM COMBO PACK

PU Foam Canisters, Applicator Gun and Cleaner

A value pack of expanding foam that includes 5 canisters of foam as well as the foam applicator gun and an applicator gun cleaner.



### FILL & FIX

Multi-Purpose Expanding PU Foam

Quick, economical PU foam for doors, windows, pipe insulation, and gap filling. Improves thermal and draft insulation. Internal/external use. Available in 500ml, 750ml aerosol and gun grade.



### MEGA FOAM

3600 Application PU Foam

High-performance expanding PU foam with 360° valve for gun or aerosol use. Ideal for doors, windows, pipes, gaps. Boosts thermal, sound insulation. Internal/external use.

Product	Code	Size	Colour	Box/ Pallet
Foam Combo Pack	BDTFC1	N/A	Beige	150 (pallet)
Fill & Fix (handheld)	BDFIX750	750ml	Beige	12
Fill & Fix (Gun Grade)	BDFIXG750	750ml	Beige	12
Mega Foam	BDEF750	750ml	Beige	12



### BREEZE BLOCK PU FOAM

#### Air-tight gap-filling foam

High-performance expanding PU foam with 360° valve for gun or aerosol use. Ideal for doors, windows, pipes, gaps. Boosts thermal, sound insulation. Internal/external use.

Product	Code	Size	Colour	Box
Breeze Block Airtight PU Foam	BDBB750	750ml	Pale Green	12

## FLOOR LEVEL COMPOUNDS



### LEVELMASTER STANDARD

#### Interior Floor Levelling Compound

Chloride-free cementitious flooring compound for level internal floors. Sets in 2–3.5 hours; covers after 6–8 hours. Apply up to 6mm thick. Interior use only.



### LEVELMASTER LATEX LIQUID

#### Latex Levelling Additive

Flexible latex additive that improves adhesion, strength and finish of self-levelling compounds. Replaces water in the mix for enhanced durability and reduced dusting.



### AD-FLOOR PLUS

#### Protein-Free Interior Floor Levelling Compound

Professional interior floor levelling compound for 3–50mm thickness (up to 60mm with granite chippings). High early strength and excellent levelling.

Product	Code	Size	Colour	Box
Levelmaster Self-Levelling Compound	BDH100B	10kg	Grey	1
Levelmaster Self-Levelling Compound	BDH102B	20kg	Grey	1
LevelMaster Latex Liquid	BDH111	5L	White	1
AD-Floor Plus	BDH110	20kg	Grey	1



### RAPID LEVEL 30

#### Latex Modified Interior Floor Levelling Compound

Rapid-setting, flexible, latex modified high performance cementitious floor levelling compound suitable for use at thicknesses from 3mm to 50mm.



### AD-FLOOR FLOOR EXTERIOR

#### High Performance Exterior Self Levelling Compound

Protein-free floor leveler, 2–50mm thick. Self-smoothing, durable, high compressive strength. Suitable for internal/external use, patch repairs, light foot and wheeled traffic.

Product	Code	Size	Colour	Box
Levelmaster Latex Levelling Compound	BDHRSFL	20kg	Grey	1
AD-Floor Floor Compound	BDH105	20kg	Grey	1



## SEALACRYL

### Roof Coating membrane

UV stable, solvent-based, multi-purpose roof coating membrane. Designed to prevent the ingress of water whilst allowing any trapped moisture to escape and evaporate naturally.



## TROWEL MASTIC

### Fibre Filled Bitumen Mastic

A multi-purpose, trowel grade material for waterproofing, stopping, bedding, pointing and sealing. It is fibre reinforced and cures to provide a strong and flexible compound.



## BITUMEN PRIMER

### Highly penetrative, bituminous solution

Heavy duty formula making it suitable to prime concrete roofs and floors, cementitious screeds/renders, weathered bitumen, bitumen felt, slate, mastic asphalt, weathered corrugated iron, steel, zinc and lead.



## BITUMEN PAINT

### General Purpose Waterproofing Paint

A general purpose, solvent-borne, bituminous black paint for protecting many building materials against water and weather damage. When dry it forms an odourless and taint-free bitumen film.



## ALU SOLAR REFLECTIVE PAINT

### Bitumen Coating with Aluminium Pigment

A light/heat reflective coating that will provide protection against solar degradation and heat gain. Ideal when applied over bituminous coatings, aged asphalt and primed steel.



## ALL WEATHER ROOF COMPOUND

### Fibrated Bitumen Coating

A fibre-reinforced waterproof coating for roofing surfaces like mastic asphalt, felt, corrugated iron, fibre/cement, slates, lead, copper, tin, and zinc.



## FELT ADHESIVE

### Cold Applied Roofing Felt Adhesive

A solvent-based adhesive for bonding bituminous roofing felts to asphalt, felt, metal, and concrete, as well as attaching mineral chippings to bituminous surfaces.



## FLASHING TAPE

### High Performance, Waterproof, Self-Adhesive Tapes

Crease resistant, lead coloured self-adhesive flashing tapes for general repairs and sealing. Application: designed for use as flashing on flat and pitched roofs, on parapets and chimney stacks.

Product	Code	Size	Colour	Box
Sealacryl	SA1GR	1kg	Grey	12
Sealacryl	SA5GR	5kg	Grey	4
Sealacryl	SA20GR	20kg	Grey	1
Sealacryl	SA1BL	1kg	Black	12
Sealacryl	SA5BL	5kg	Black	4
Sealacryl	SA20BL	20kg	Black	1
Trowel Mastic	BDB011	1L	Black	6
Trowel Mastic	BDB012	2.5L	Black	6
Trowel Mastic	BDB013	5L	Black	4
Bitumen Primer	BDB034	1L	Black	6
Bitumen Primer	BDB019	2.5L	Black	6
Bitumen Primer	BDB020	5L	Black	4
Bitumen Primer	BDB029	25L	Black	1
Bitumen Paint	BDB015	1L	Black	6
Bitumen Paint	BDB016	2.5L	Black	6
Bitumen Paint	BDB017	5L	Black	4
Bitumen Paint	BDB018	25L	Black	1
Aluminium Solar Reflective Paint	BDB030	2.5L	Silver	6
Aluminium Solar Reflective Paint	BDB021	5L	Silver	4
Aluminium Solar Reflective Paint	BDB022	25L	Silver	1
All Weather Roofing Compound	BDB026	2.5L	Black	6
All Weather Roofing Compound	BDB027	5L	Black	4
All Weather Roofing Compound	BDB028	25L	Black	1
Felt Adhesive	BDB000	1L	Black	6
Felt Adhesive	BDB001	2.5L	Black	6
Felt Adhesive	BDB002	5L	Black	4
Felt Adhesive	BDB003	25L	Black	1
Flashing Tape	BDB008	2.5L	Black	6

# Tapes



## SCRIM TAPE High Strength Drywall Tape

A 100% fibreglass close weave (9 x 9 per sq inch) mesh scrim tape which will not blister or bubble. Application: with a self-adhesive backing, this tape eliminates the need for preplastering, provides reinforcement and saves time and money.



## DUCT TAPE Water-Resistant Tape

Premium quality, water-resistant duct tape. Application: perfect for binding, fixing, sealing, repairing, joining, protecting, marking and much more.



## MASKING TAPE Premium Decorators Tape

A premium grade, buff coloured tape for masking and marking. Application: with a self-adhesive backing, this tape eliminates the need for preplastering, provides reinforcement and saves time and money.



## FOIL TAPE Self-Adhesive Aluminium Tape

A heat and light reflective tape which is suitable for use with duct systems on all types of ventilation and air conditioning systems. Application: ideal for use between foil faced insulation panels and wall applications.



## RESCUE TAPE Self-Fusing, Silicone Repair Tape

A superb repair strip with infinite uses. Ideal for repairing leaks in plumbing and hoses in a flash. It can be used to insulate electrical wiring and can withstand a working temperature of 200 °C.



## X-TREME DRYWALL TAPE Self-Adhesive Drywall Tape

A heat and light reflective tape which is suitable for use with duct systems on all types of ventilation and air conditioning systems. Application: ideal for use between foil faced insulation panels and wall applications.

Product	Code	Size	Colour	Box
Scrim Tape	BDDJ2	2" x 90m	White	24
Scrim Tape	BDDJ3	3" x 90m	White	18
Scrim Tape	BDDJ4	4" x 90m	White	12
Duct Tape	BDDT45S	48mm x 45m	Silver	24
Duct Tape	BDDT45BL	48mm x 45m	Black	24
Masking Tape	BDMT25	25mm x 90m	Buff	6 x 6
Masking Tape	BDMT38	38mm x 90m	Buff	4 x 6
Masking Tape	BDMT48	48mm x 90m	Buff	4 x 6
Masking Tape	BDMT75	75mm x 90m	Buff	4 x 3
Foil Tape	BDAT50	50mm x 45m	Silver	24
Foil Tape	BDAT75	50mm x 75m	Silver	16
Foil Tape	BDAT100	50mm x 100m	Silver	12
Rescue Tape	BDRTBL	4mm x 3.65m	Black	8
Rescue Tape	BDRTCL	4mm x 3.65m	Clear	8
X-Treme Drywall Tape	LYDJ2	50mm x 9m	Grey	24
X-Treme Drywall Tape	LYDJ3	75mm x 9m	Grey	18
X-Treme Drywall Tape	LYDJ4	100mm x 9m	Grey	12

**bond it**

TIGRIS TAPES  
SELF-ADHESIVE, LIGHTWEIGHT  
**SCRIM TAPE**  
• FIBREGLASS MESH STRENGTH •  
• REINFORCES • ELIMINATES PRE PLASTERING •  
• SAVES TIME AND MONEY •

**Self Adhesive**  
**SCRIM TAPE**  
Sizes 2", 3", 4"

**Professional Drywall Joint Tape**

**bond it**

**RESCUE TAPE**

SELF FUSING

WATERPROOF & AIRTIGHT  
MADE WITH SILICONE - NO ADHESIVE  
STRETCH, WRAP & GET RESCUED

950PSI TENSILE STRENGTH  
500°F HEAT RESISTANCE  
8,000V ELEC. INSULATION

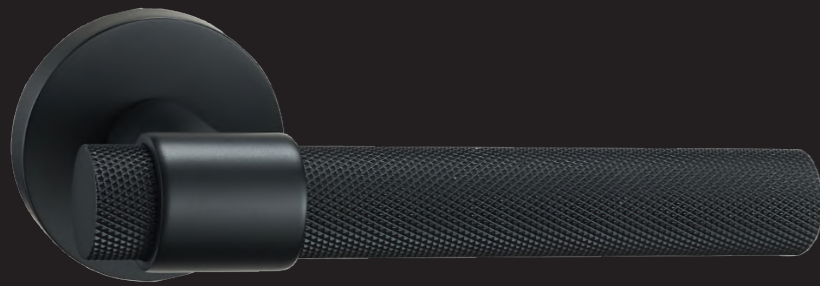
- 260°C Heat Resistant
- 8,000V Electrical Insulation
- 950PSI Tensile Strength

Timeless aesthetic meets  
precision engineering.

The Fortessa Prestige Selection is more than just door handles—it's a mark of luxury. Every piece is beautifully designed and expertly made to elevate any space, whether modern or classic.

 **Fortessa**<sup>™</sup>  
PRESTIGE SELECTION





≡ **DRACO**  
Satin Black



≡ **VULCAN**  
Solid Gun Metal Grey



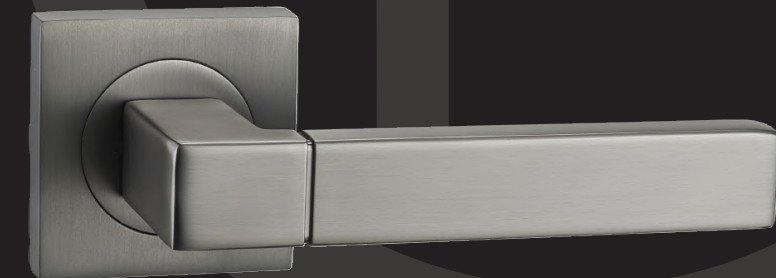
≡ **VADAR**  
Satin Black



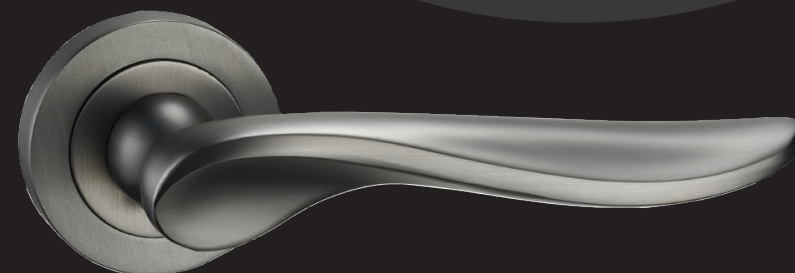
≡ **SERENITY**  
Satin Black



≡ **HORIZON**  
Satin Bronze

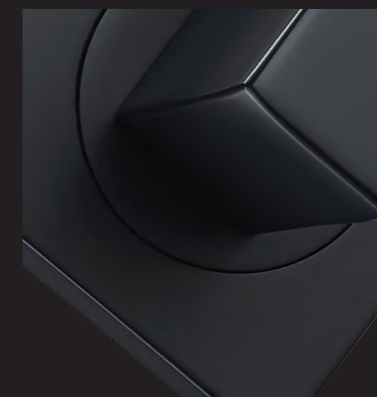


≡ **TARANIS**  
Solid Gun Metal Grey

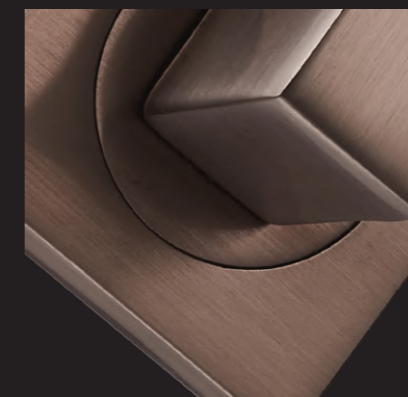


≡ **VULCAN**  
Solid Gun Metal Grey

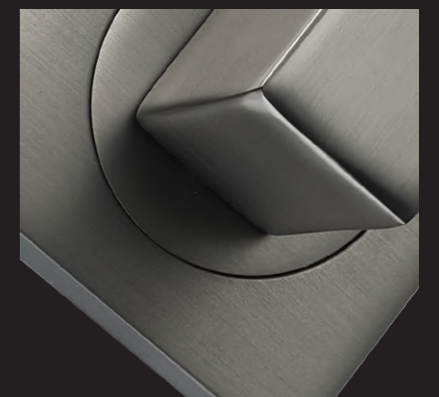
Introducing an exclusive palette of finishes within the Prestige range



Satin Black



Satin Bronze



Solid Gun Metal Grey

crafted to bring timeless elegance and distinction to every detail.



Open doors to  
new possibilities

Our products are a  
manifestation of our  
passion for design,  
elegance and style.

Each Fortessa door lever  
is manufactured from  
premium grade metals and  
combines modern  
technology and expert  
craftsmanship in perfect  
harmony, to create a  
prestigious blend of high  
performance and design.



WAVE

Satin Nickel



ACHILLES

Satin Nickel



SWISH

Satin Nickel



ACHILLES

Antique Bronze



OLYMPIA

Satin Nickel / Polished Chrome



MAYA

Satin Nickel / Nickel Polish



SORRENTO

Satin Polished Chrome



AVANT

Satin Chrome



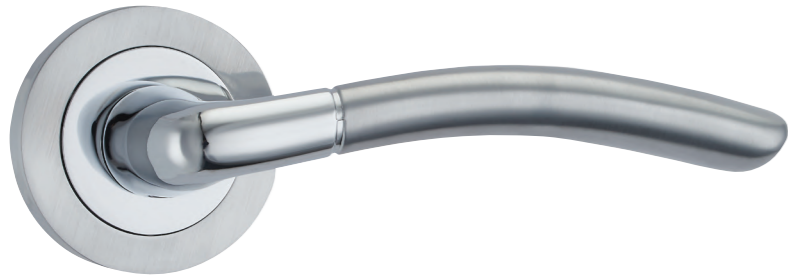
FOKO

Satin Polished Chrome



BULBUS

Satin Nickel



≡ **AMALFI**  
Satin Polished Chrome



≡ **VERTO**  
Satin Nickel



≡ **MILAN**  
Satin Nickel / Polished Chrome



≡ **VERTO**  
Polished Brass



≡ **AZTEC**  
Satin Polished Chrome



≡ **ARES**  
Satin Nickel / Polished Chrome



IMAGE VERTO



≡ **VERSAILLES**

Polished Chrome



≡ **VERSAILLES**

Antique Bronze



≡ **VISTA**

Satin Chrome



≡ **VISTA**

Polished Chrome

Bringing an exclusive palette of finishes within the Lifestyle range.



≡ **VERSAILLES**

Satin Brass



≡ **VERSAILLES**

Satin Chrome



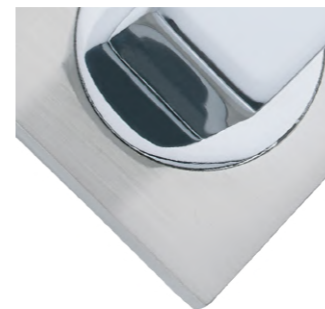
Satin Nickel



Nickel Polish



Satin Chrome



Polished Chrome



Satin Brass



Antique Bronze



Polished Brass

# Basta

## Signature



# Basta Signature Range

An exclusive collection from Basta. A luxurious range of sleekly designed door handles, and elegant door knobs. The Basta Signature range offers contemporary designs in a unique style. The ultimate statement pieces.



## LEVER ON ROSE

Basta *Signature*

### MALMO



### PARIS



### OSLO



### BERLIN



## DOOR KNOBS

### RIGA - BRASS



### RIGA - CHROME



### PORTO



### SEVILLE



# Basta

YOU'RE IN GOOD HANDS



## Basta Door Handles

Step into timeless elegance with Basta Door Furniture - where tradition meets innovation. Our rich Irish legacy of over 60 years ensures quality, craftsmanship, and sophistication in every knob, hinge, and handle.



### LEVER ON ROSE

### Basta

#### ROXTON



#### KELSI



#### MERRION



#### SHREWSBURY



#### EDEN



#### ASHFORD



#### RICHMOND



#### BELAIR



# LEVER ON PLATE

## Basta

BELAIR



SHERBORNE



BELVEDERE



YEATS



GLENCAR



REGENCY



# LEVER ON PLATE

## Basta

DOURO



GEORGIAN



VICTORIAN



FORTRESS



BLACK ANTIQUE



FLEUR DE LYS



**ROTHLEY**

Distributed in Ireland by Laydex

# Rothley Ironmongery

Rothley has over 200 years experience as one of Europe's leading suppliers of DIY, builders products and decorative hardware. With an extensive range of ironmongery, Rothley provides exceptional solutions to meet all requirements.

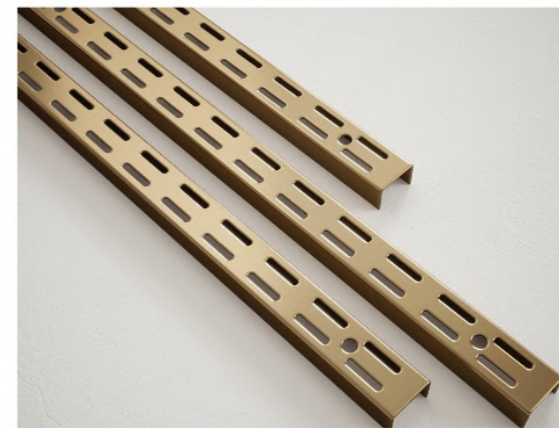


**ROTHLEY**



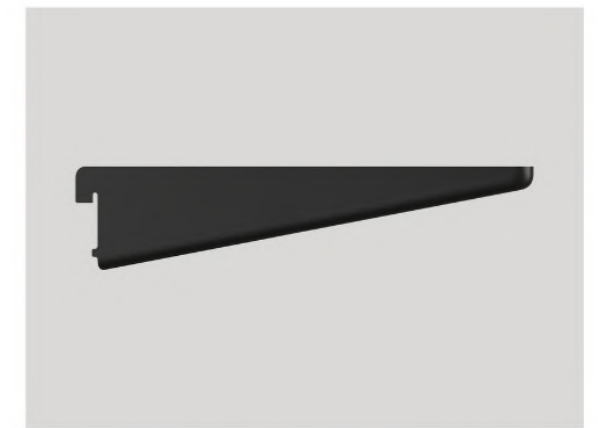
## Twin Slot Shelving

Made from durable materials and available in various sizes and finishes, the twin slot shelving systems are designed to suit any decor and storage requirements. For anyone looking for a sleek and modern shelving solution to complement their contemporary decor or a sturdy and practical shelving system for their garage or workshop, Rothley's collection has it covered. These twin slot shelving systems are easy to install and can be customized to fit any space or storage needs.



### Twin Slot Uprights

Durable, versatile uprights designed to support adjustable shelving. Ideal for creating custom storage setups with ease.



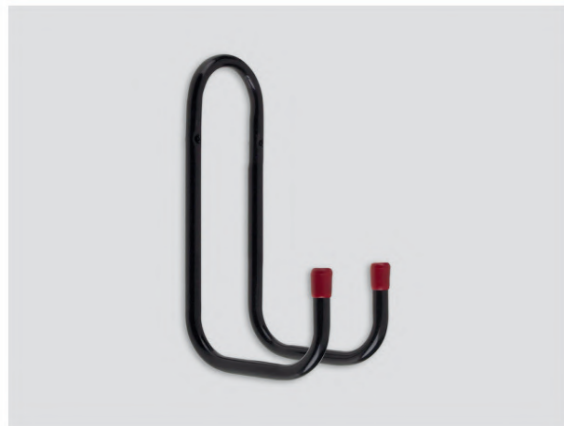
### Twin Slot Shelving Brackets

Strong, dependable brackets that lock securely into uprights. Perfect for holding shelves of various sizes and loads.



## Hooks

Your customer can maximise their storage potential with Rothley's range of practical and stylish storage hooks. This collection includes a variety of hooks to suit specific needs, from sturdy tubular hooks to versatile spring loaded clips. Whether hanging coats, organising tools, or storing kitchen utensils, Rothley's hooks are designed to keep your belongings neatly organised and easily accessible.



Tubular Double Hook

Made of durable steel, this versatile hook is a smart storage solution for garages, workshops, or homes. Easily hang tools, bicycles, ladders, and more.



Universal Hook

A versatile, durable hook suitable for garages, utility rooms, and workshops. Perfect for hanging tools, cables, and general equipment.



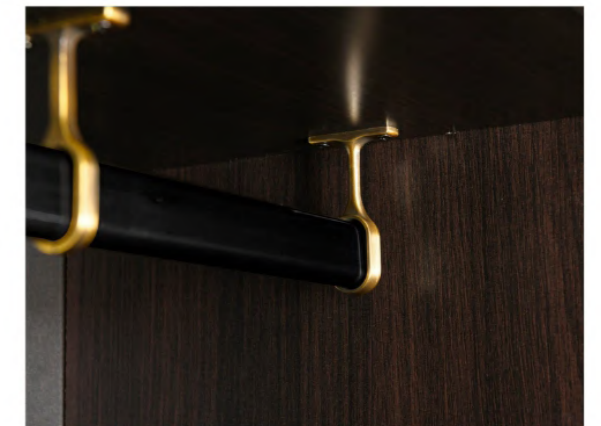
## Brackets

Rothley's extensive range of brackets are sleek, modern and durable. The London Bracket features a minimalist design in a range of finishes, while being made from high-quality steel to offer a lightweight yet sturdy storage solution.



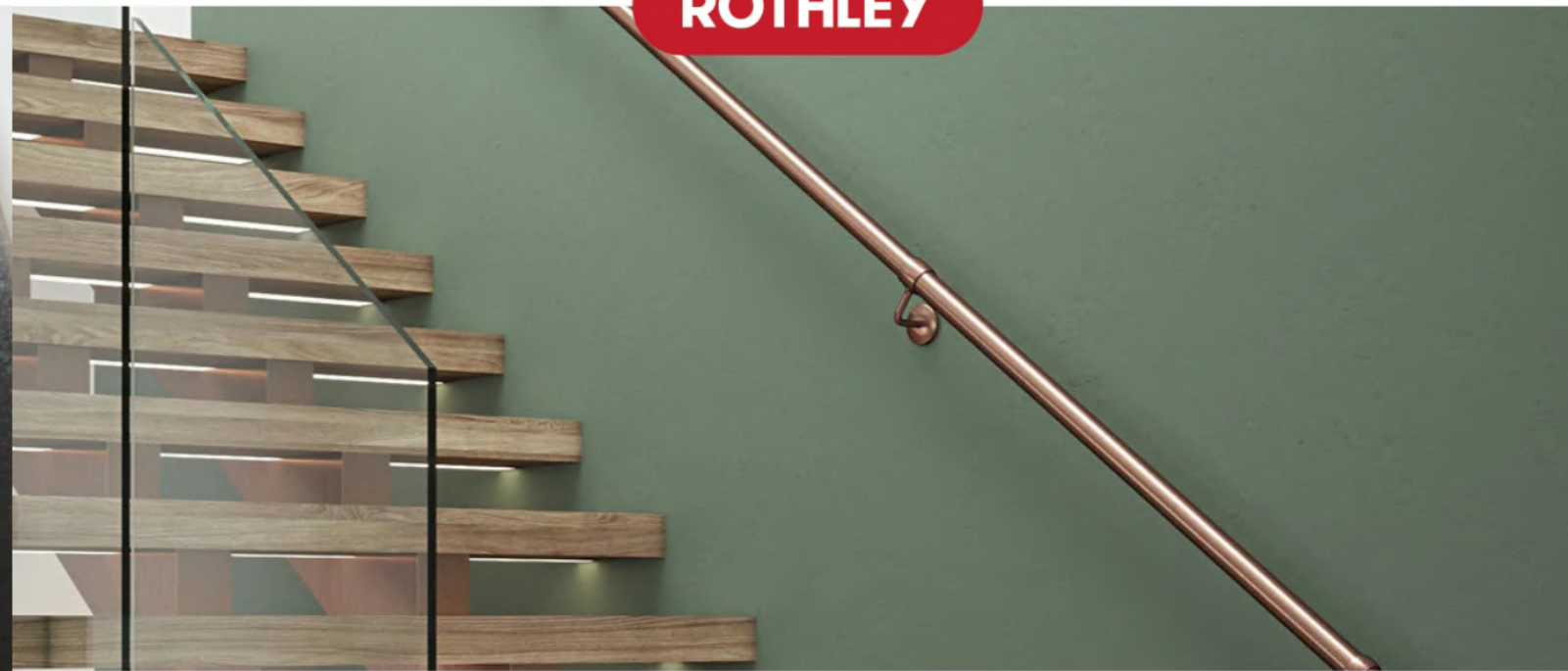
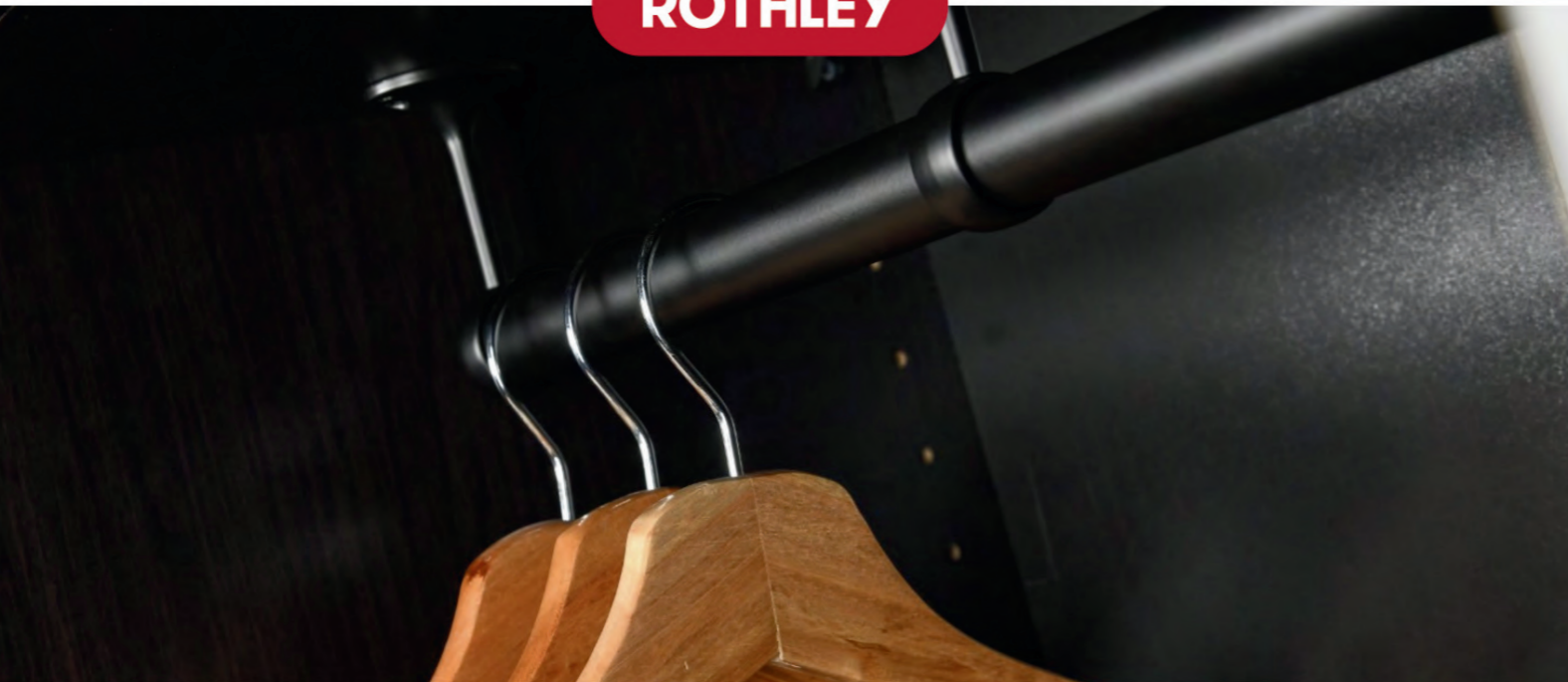
London Bracket

A stylish, sturdy bracket designed for open shelving. Perfect for adding both support and a decorative touch to any room.



Oval Centre Bracket

A strong centre support bracket ideal for oval wardrobe rails. Ensures stability and smooth, reliable hanging for clothing.



## Rails

Elevate your projects with Rothley's extensive range of premium Rails and Fittings. This collection caters to a wide variety of applications, from intricate furniture detailing to robust industrial components, with a Polished Effect. Crafted with meticulous attention to detail, these rails and fittings are made from durable materials. This ensures longevity and resistance to wear and tear, this diverse collection offers the perfect touch to finish any project.

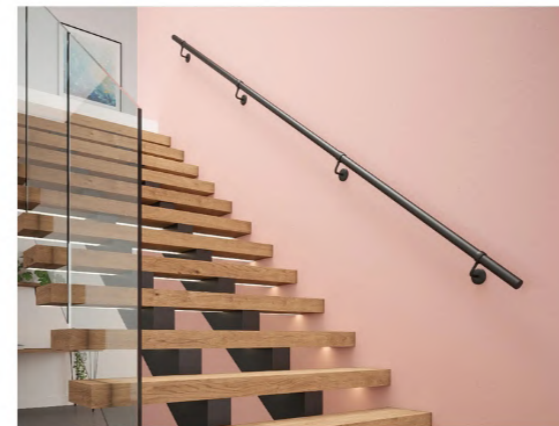


### Round Rail

Sleek, durable rail ideal for wardrobes and storage spaces. Provides smooth support for hangers and everyday essentials.

## Handrail Kits

Rothley's comprehensive handrail kits can elevate any space. Whether enhancing Indoor accessibility or adding safety to outdoor spaces, these kits provide everything needed for a seamless installation.



### Indoor Handrail

A modern, stylish handrail designed for indoor staircases, offering dependable support with a clean, contemporary look.

### Outdoor Handrail

A weather-resistant handrail built to withstand the elements, providing sturdy and reliable support for exterior steps and walkways.



[www.laydex.com](http://www.laydex.com)



VISIT OUR WEBSITE

**DUBLIN**

Call us: +353 01 6426600  
Email us: [sales@laydex.ie](mailto:sales@laydex.ie)

Unit 3, Allied Ind. Estate, Kylemore Rd,  
Dublin 10, Ireland

**BELFAST**

Call us: +44 28 9038 2223  
Email us: [sales@laydex.com](mailto:sales@laydex.com)

Units 4/5 Falcon Way, Adelaide Ind. Est.  
Belfast, N. Ireland