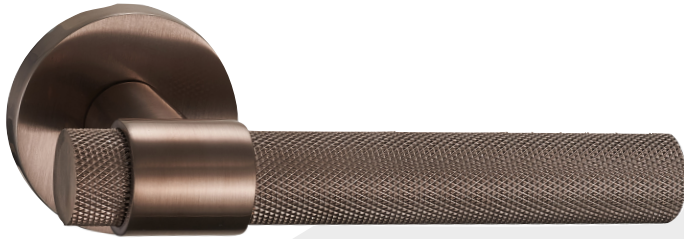




 **Fortessa**TM
PRESTIGE SELECTION

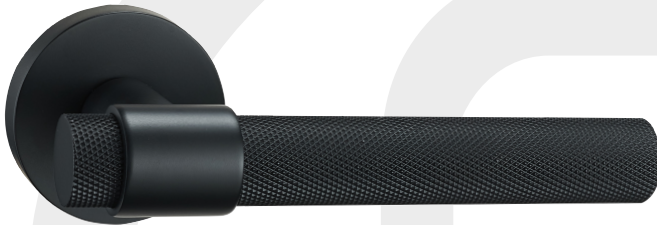
Uncompromising Luxury,
combined with enviable performance





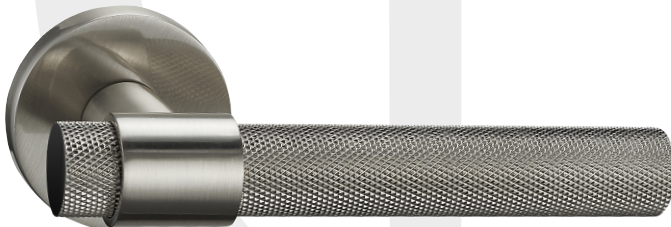
≡ DRACO

DRA-SBR (Satin Bronze)



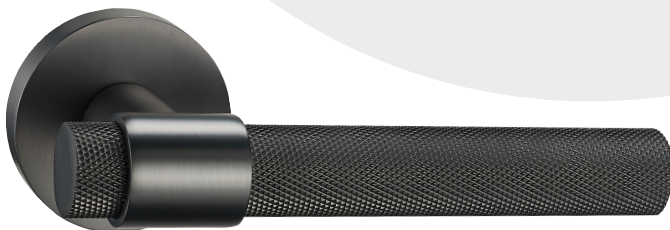
≡ DRACO

DRA-SBL (Satin Black)



≡ DRACO

DRA-GMG (Gun Metal Grey)



≡ DRACO

DRA-SGMG (Satin Gun Metal Grey)



≡ SERENITY

SER-SBL (Satin Black)



≡ SERENITY

SER-SBR (Satin Bronze)



≡ HORIZON

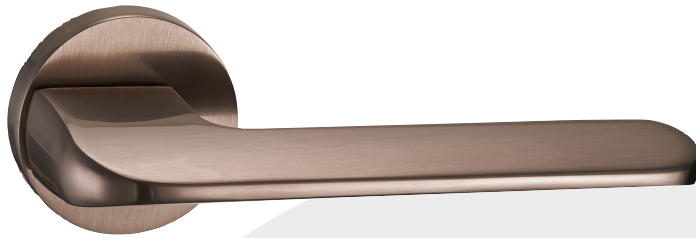
HOR-SBR Satin Bronze



≡ HORIZON

HOR-SGMG Satin Gun Metal Grey





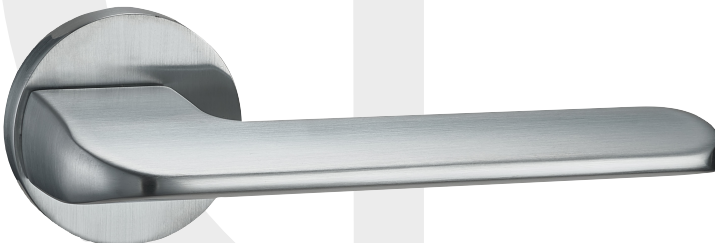
≡ HORIZON

HOR-SBR (Satin Bronze)



≡ HORIZON

HOR-SBL (Satin Black)



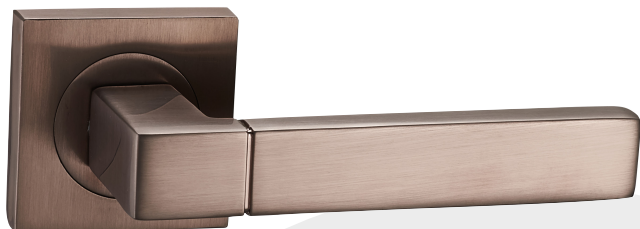
≡ HORIZON

HOR-GMG (Gun Metal Grey)



≡ HORIZON

HOR-SGMG (Satin Gun Metal Grey)



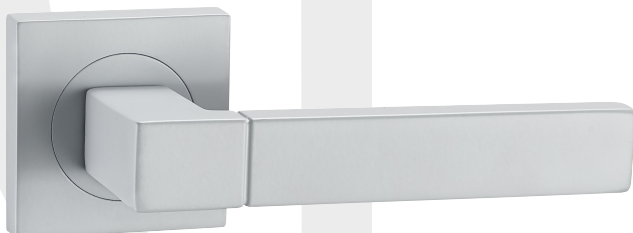
≡ TARANIS

TAR-SBR (Satin Bronze)



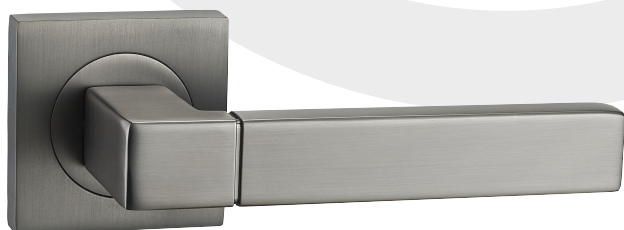
≡ TARANIS

TAR-SBL (Satin Black)



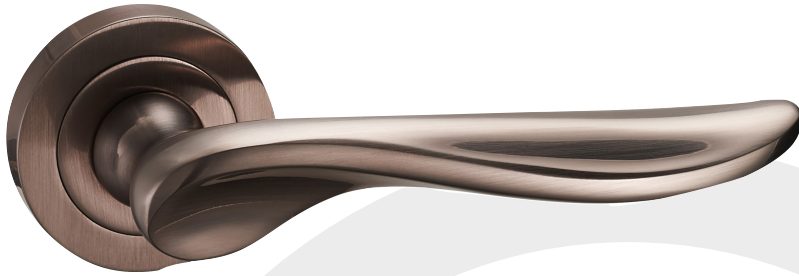
≡ TARANIS

TAR-SC (Satin Chrome)



≡ TARANIS

TAR-SGMG (Gun Metal Grey)



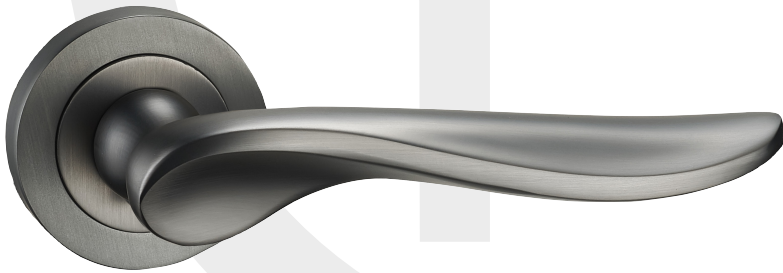
≡ VULCAN

VUL-SBR (Satin Bronze)



≡ VULCAN

VUL-SBL (Satin Black)

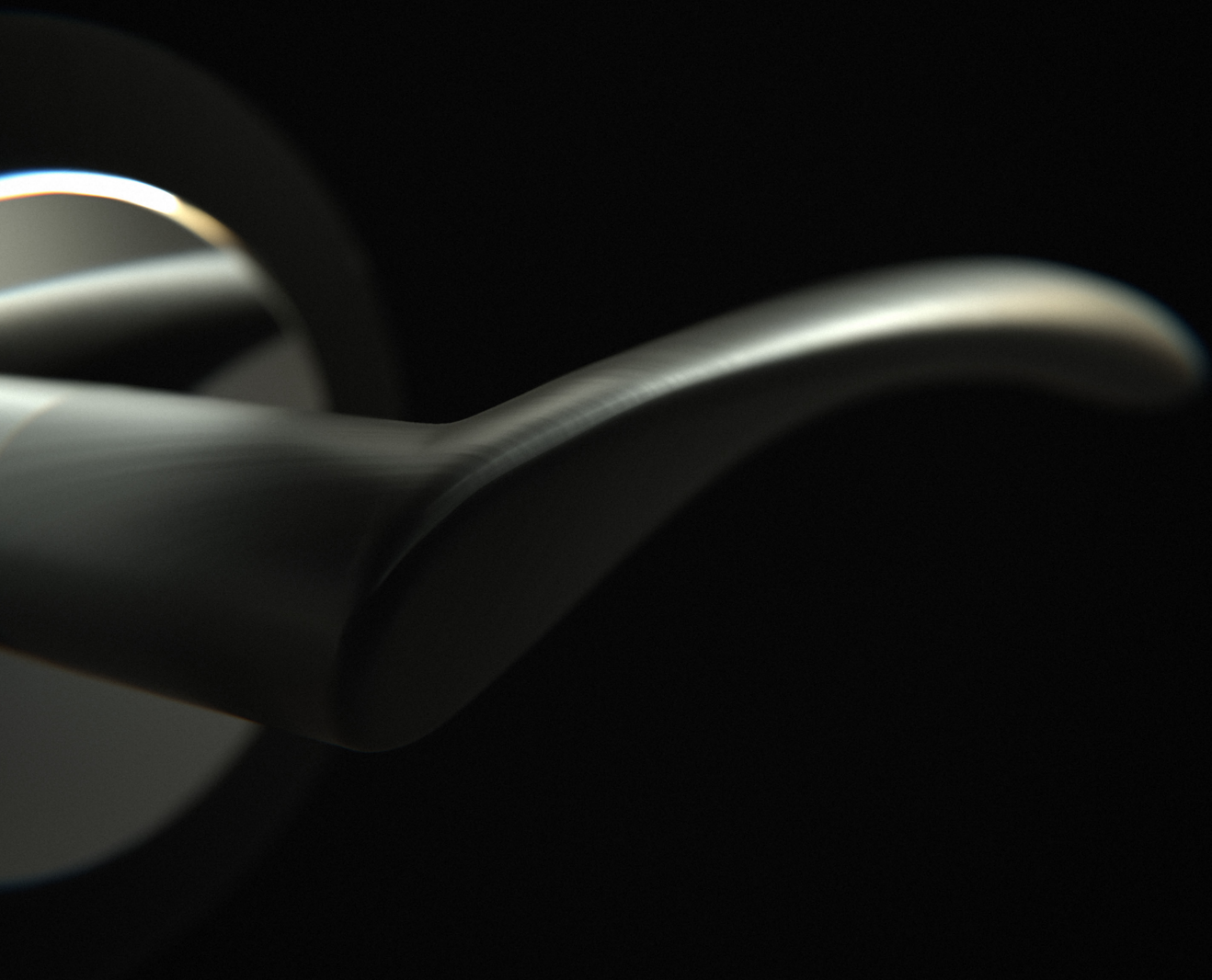


≡ VULCAN

VUL-GMG (Gun Metal Grey)



Our new monotone Gun Metal
finish brings an effortless
elegance to interior door wear



Durability, Performance and Precision are the cornerstones of all our products



All products undergo thorough testing at all stages of manufacture



All Levers must comply to strict quality examinations



Performance of all working parts is rigorously tested



Each Lever is assessed for resistance to corrosion and scratches



All collections are carefully checked by eye to ensure perfection before dispatch



All levers meet DIN EN 1906 Interior Residential classification standards

We continually aim to exceed industry standards and all Fortessa levers on rose are manufactured to European Industry Standards for Door Levers DIN EN 1906. Mechanical parts have a 10 year guarantee.

CE
Handles manufactured to European
DIN EN 1906 Quality Standards


Intertek



www.fortessa-handles.com