



**SUBSTRATE
PREPARATION
& FLOORING
ADHESIVES**





MAPEI PROVIDES COMPLETE SYSTEMS
FOR THE PREPARATION OF SUBSTRATES TO RECEIVE
ALL TYPES OF FLOOR COVERINGS, EVEN IN THE MOST
CHALLENGING ENVIRONMENTS.



Contact our
team at Laydex

TABLE OF CONTENTS

SUBSTRATE PREPARATION & FLOORING ADHESIVES

04 PRIME

06 Eco Prim T Plus

07 Eco Prim Grip Plus

08 Primer G

10 PROTECT MOISTURE CONTROL

12 Mapeproof Primer - Water Based DPM

14 Mapeproof One Coat - Epoxy DPM

16 SMOOTH: LEVELLING COMPOUNDS

18 Latexplan Trade

19 Latexplan No Ammonia

20 Ultraplan Renovation Screed 3240

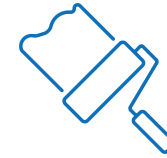
22 Planiprep Fix

24 FLOORING ADHESIVES

26 Ultrabond Eco 380

27 Ultrabond Eco VS90 Plus

28 Eco Tack TX+



Prime

Surfaces on which resilient materials are to be installed must be sufficiently clean and free of dust, grease, oil, paint, loose particles and any other substance that could compromise the adhesion of subfloor preparation materials. As a general rule, all substrates should be primed unless specifically directed otherwise and products must be chosen according to the condition and type of substrate.

The majority of subfloor preparation materials require substrates to be primed prior to application. Priming of the substrate, where necessary, and when used correctly, will improve the adhesion of subfloor preparation products to the substrate by penetrating the surface of the substrate and reducing its porosity.

Priming can assist in reducing the possibility of visible air bubbles in the surface of the applied subfloor preparation materials, caused by trapped air within the substrate. On a practical level, priming the substrate will help to ascertain if there is any contamination previously unseen that will require to be dealt with. Priming substrates will also improve the overall flow rate and coverage of the subfloor preparation materials. Primer should not be used as a dust suppressant or replacement for correct preparation, but will assist in dealing with micro particles of dust.

Eco Prim T Plus

DESCRIPTION



Multi-purpose acrylic primer that improves the adhesion of interior levelling compounds on all types of absorbent and non-absorbent substrates. The primer has excellent bonding, flexibility, water and age resistant properties and is easily applied by brush or roller.



www.blauer-enge.de/uz113

MAIN FEATURES



PERFECT ADHESION TO THE SUBSTRATE



APPLICATION BY ROLLER OR BRUSH



LOW VOC EMISSIONS IN INTERNAL ENVIRONMENTS



READY TO USE

WHERE TO USE



COMMERCIAL ENVIRONMENTS



HOSPITALS



INDUSTRIAL BUILDINGS



DOMESTIC ENVIRONMENTS

TECHNICAL DATA

Drying time: 30 - 60 mins

Waiting time for app. of smoothing compounds: 2/3 h.

Coverage (approx): Up to 50m² per 5kg - undiluted.

Shelf life: 24 months

Packaging: 20kg & 5kg

Colour: Blue

Eco Prim Grip Plus

DESCRIPTION



Grey, bonding promoting primer, ideal for non-absorbent substrates, for the installation of smoothing compounds. Pre-aggregated to provide an exceptional key and high-grip surface.



MAIN FEATURES



PERFECT ADHESION TO THE SUBSTRATE



APPLICATION BY ROLLER OR BRUSH



LOW VOC EMISSIONS IN INTERNAL ENVIRONMENTS



READY TO USE



SHAKE BEFORE USE

WHERE TO USE



COMMERCIAL ENVIRONMENTS



HOSPITALS



INDUSTRIAL BUILDINGS



DOMESTIC ENVIRONMENTS

TECHNICAL DATA

Drying time: approx. 30 mins

Waiting time for app. of smoothing compounds: ≈ 30 mins

Coverage (approx): Up to 25m² per 5kg

Shelf life: 12 months

Packaging: 10kg & 5kg

Colour: Grey

PRIMER G

DESCRIPTION Synthetic resin primer in water dispersion with a very low content of volatile organic compounds (VOC).



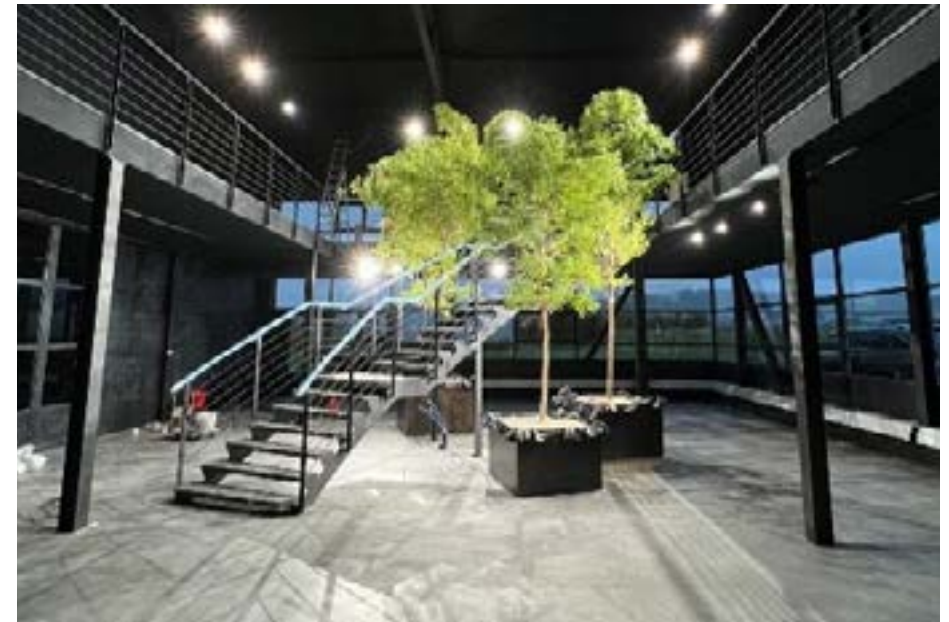
PROJECT

Exhibition Space Naku Basadingen



The showroom of the Naku company in Basadingen was renovated.

Thin and large-format porcelain stoneware tiles were laid.



8

MAIN FEATURES



PERFECT ADHESION TO THE SUBSTRATE



APPLICATION BY ROLLER OR SPRAY



LOW VOC EMISSIONS IN INTERNAL ENVIRONMENTS



READY TO USE

WHERE TO USE



COMMERCIAL ENVIRONMENTS



HOSPITALS



INDUSTRIAL BUILDINGS



DOMESTIC ENVIRONMENTS

TECHNICAL DATA

Drying time: 2 hours.

Consumption: 0.1-0.2 kg/m² depending on use.

Shelf life: 24 months. Protect from frost.

Packaging: 25-10-5 kg drums and 12x1 kg packs.

Colour: Blue

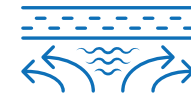
9

Basadingen, Switzerland

Ref #: 4634

Category: Commercial Facilities





Protect Moisture Control

When installing resilient floor coverings; vinyl sheet and tile, rubber, linoleum and all other textile and wood floor coverings, approximately 90% of installation failures fall in to two categories, poor preparation and the failure to deal with excessive moisture in the substrate.

Before commencing with the installation of any resilient floor covering it is essential that substrates have been given time to dry correctly. The drying time for traditional cementitious substrates made from sand and cement is approximately 10 days per centimetre of thickness and during this period, screeds are subject to hygrometric shrinkage and possible cracking. These cracks will compromise any surface moisture protection and may well form a risk of subfloor preparation de-bonding from the substrate.

It is vital to ensure that substrates are dry prior to floor preparation and installation. The dryness of substrates can be measured in a number of ways and, in most cases, to install moisture sensitive materials the relative humidity must be lower than 75% (RH) / 2% (WW) for cementitious substrates and below 0.5% (WW) for gypsum or anhydrite-based screeds.

■ Mapeproof Primer

WATER BASED DPM

DESCRIPTION

One-component, two-coat applied, rapid drying PVDC based dispersion primer for suppressing residual moisture up to 4.5 CM-% (95% R.H.). Suitable for use over heated screeds up to a maximum of 85% R.H. Roller applied.



www.bauer-engineering.de/uz113

12

MAIN FEATURES



ZERO ENVIRONMENTAL IMPACT



READY TO USE



UNDERFLOOR HEATING



LOW ODOUR

WHERE TO USE



COMMERCIAL ENVIRONMENTS



HOSPITALS



INDUSTRIAL BUILDINGS



DOMESTIC ENVIRONMENTS

TECHNICAL DATA

Wait time for application of smoothing compound:

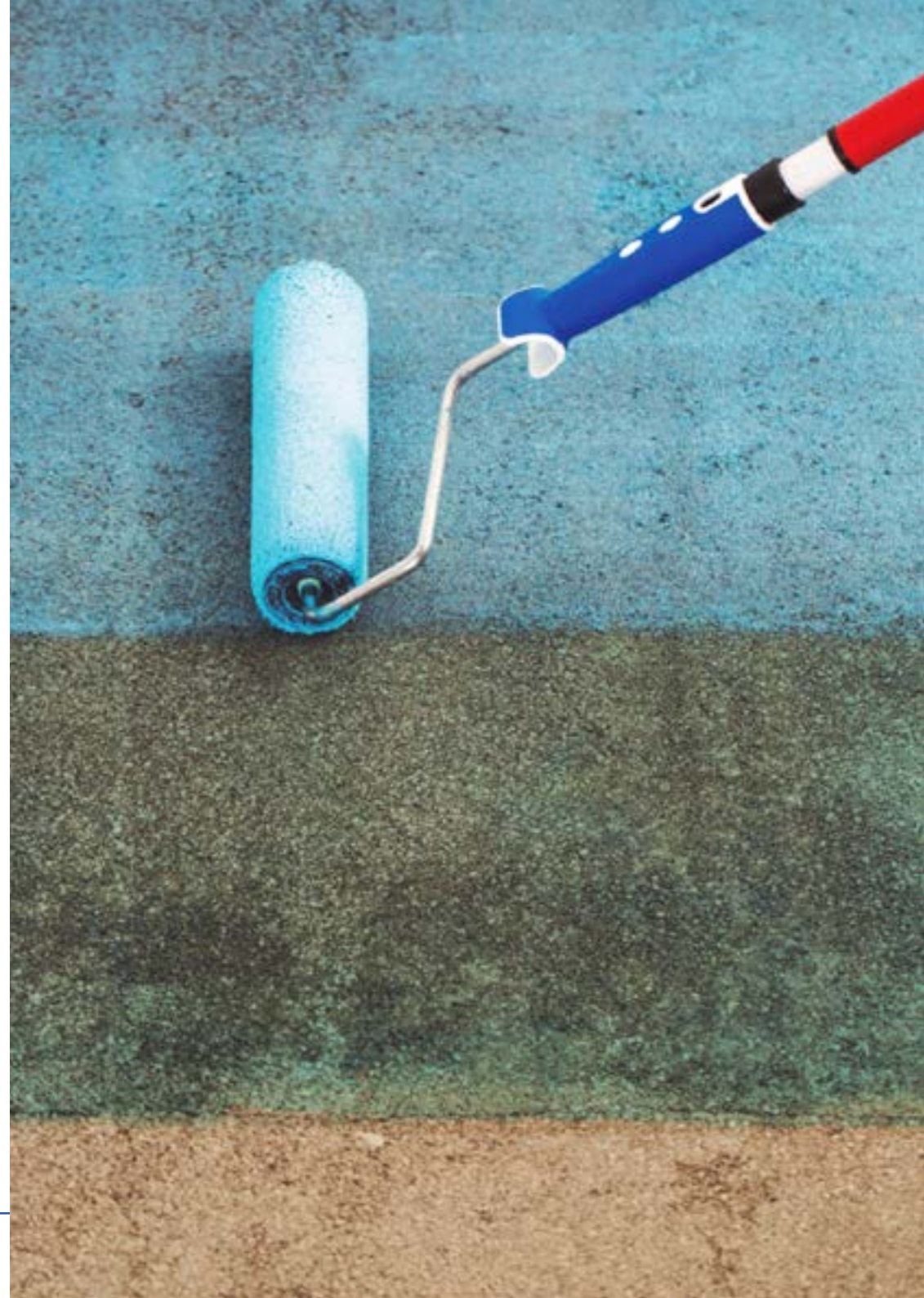
2 - 5 hours (max 12 hours)

Coverage (approx 2 coats): Up to 40m² per 10kg unit

Shelf life: 12 months

Packaging: 10kg

Colour: Turquoise



■ Mapeproof One Coat

EPOXY DPM

DESCRIPTION

Two-component, single coat, black, epoxy surface applied DPM. Applied to cement-based substrates for controlling residual, static and construction moisture levels of above 75% (BS8203) and below 97% R.H. on subfloors with an effective structural damp proof membrane prior to the installation of resilient, textile and wood floor coverings. Suitable for use with underfloor heating except where wood finishes are to be installed. Trowel and roller applied.



14

MAIN FEATURES



APPLICATION BY TROWEL OR ROLLER



UNDERFLOOR HEATING



VAPOUR CONTROL

WHERE TO USE



COMMERCIAL ENVIRONMENTS



HOSPITALS



INDUSTRIAL BUILDINGS



DOMESTIC ENVIRONMENTS

TECHNICAL DATA

Set to light foot traffic: After approx. 5 hours
Final hardening: At +23°C 24 hours
Coverage(approx): 16m² per 7kg unit
Protection from RH Levels of 75%RH to 97%RH
Shelf life: 12 months
Packaging: 7kg kit

PROJECT



WAVENDON COMMUNITY HUB

Mapei preparation products have been used to complete an Altro floor installation at a new community venue in Buckinghamshire.

15

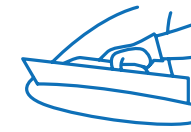


📍 Buckinghamshire, United Kingdom

Ref #: 29082023

Category: Public Buildings and Places





Smooth: Levelling Compounds

The precautions that need to be taken when installing resilient materials are quite different to those of other floor covering materials. Consideration regarding the very nature of resilient materials being installed needs to be made, resilient flooring is usually deformable and, if subjected to concentrated loads, does not have the capacity to distribute stresses, and tends to transfer them to the underlying substrate, which therefore must have high performance characteristics.

Resilient floor coverings can be thin, only a few millimetres thick, this low thickness will not cover or hide defects or uneven areas present on the subfloor and for this reason, surfaces must always be adequately prepared with specific smoothing products. Surface regularity classes are given in BS 8204 as SR1, SR2 and SR3 relating to 3mm, 5mm and 10mm respectively.

Substrates must be prepared according to specific requirements and to make them suitable for laying floor coverings, and these requirements may vary according to their final intended use. Since substrates are usually smoothed over before installing floor coverings, the smoothing products used must also have adequate mechanical strength for required application. Classification of smoothing compounds is measured according to their compressive and flexural strength.

■ Latexplan Trade

DESCRIPTION

Two-component, levelling and smoothing compound for differences in thickness of 3 to 10mm on new or existing floors. Suitable to receive all types of floor covering in commercial and domestic settings. High compressive strength (26N/mm²) and low odour. Suitable for castor wheels and heated screeds. Moisture tolerant.



■ Latexplan No Ammonia

DESCRIPTION

Latexplan No Ammonia is a fast setting two-component levelling and smoothing compound for differences in thickness of 3 to 10mm. Suitable for use over old adhesive residues (including bitumen) it can also be applied to plywood and ceramic tile without the need for priming. Protein free with no ammonia. Suitable for castor wheels and heated screeds. Moisture tolerant.



19

MAIN FEATURES



UNIFORM SURFACE



SMOOTHING AND SKIMMING COMPOUND



UNIFORM SURFACE



SMOOTHING AND SKIMMING COMPOUND



OVER ADHESIVE RESIDUE

WHERE TO USE



COMMERCIAL ENVIRONMENTS



HOSPITALS



INDUSTRIAL BUILDINGS



DOMESTIC ENVIRONMENTS

WHERE TO USE



COMMERCIAL ENVIRONMENTS



HOSPITALS



INDUSTRIAL BUILDINGS



DOMESTIC ENVIRONMENTS

TECHNICAL DATA

Setting time: 45 - 60 mins
Set to light foot traffic: 1.5 - 2hrs
Waiting time for the inst. of floor coverings: 12hrs
Coverage (approx): 6m² at 3mm thickness per unit
Shelf life: A: 12 months B: 24 months
Packaging: 30kg kit

TECHNICAL DATA

Setting time: 30 mins
Set to light foot traffic: 60 mins
Waiting time for the inst. of floor coverings: 4hrs
Coverage (approx): 5m² at 3mm thickness per unit
Shelf life: A: 12 months B: 24 months
Packaging: 24.4kg kit

■ Ultraplan Renovation Screed 3240

DESCRIPTION



Fibre-reinforced self-levelling compound designed for the renovation/refurbishment of new and existing floor substrates for differences of 3 to 40mm. For use in both commercial and domestic situations. Suitable for use over many common substrates and flexible enough for use over old and new timber flooring, floorboards, chipboard panels and plywood to receive most types of floor covering. Suitable for underfloor heating systems and castor wheels. Can be hand or pump applied.



MAIN FEATURES



UNDERFLOOR HEATING



SMOOTHING AND SKIMMING COMPOUND



FIBRE REINFORCED

WHERE TO USE



COMMERCIAL ENVIRONMENTS



HOSPITALS



INDUSTRIAL BUILDINGS



DOMESTIC ENVIRONMENTS

TECHNICAL DATA

Setting time: 30 - 90 mins

Set to light foot traffic: 3 - 12 hours

Waiting time for the inst. of floor coverings:

Ceramic tiles: 3 - 12 hours

Resilient/Wood floorings: 24 - 72 h

Coverage (approx): 6m² at 3mm thickness per unit

Shelf life: 12 months

Packaging: 25kg

PROJECT



HEALTH & ALLIED PROFESSIONS CENTRE, NTU

Mapei preparation and fixing products have been used to complete a surface installation at Nottingham Trent University's Health & Allied Professions Centre.



📍 Nottingham Trent, United Kingdom

Ref #: 21112022

Category: Commercial facilities



Planiprep Fix

DESCRIPTION



Ultra-fast drying, fine grained, thixotropic, cementitious skimcoat compound for the repair and smoothing of interior substrates, including floors and steps. Suitable for application from 0-4mm prior to the laying of resilient and textile floor coverings.



22

MAIN FEATURES



FAST INSTALLATION AND RAPID SETTING



LOW THICKNESS



STEPS AND STAIRS

WHERE TO USE



COMMERCIAL ENVIRONMENTS



HOSPITALS



INDUSTRIAL BUILDINGS



DOMESTIC ENVIRONMENTS

TECHNICAL DATA

Waiting time for the installation of floor coverings: 30 minutes

Coverage (approx): 1.25 kg / m² per mm layer thickness

Shelf life: 24 months

Packaging: 4 x 4kg Alupack bags

PROJECT



CAP CANAILLE DAY CARE CENTRE

The floor of the Cap Canaille day care centre was renovated. The existing tiles were sanded down and spot filling was carried out with Planiprep Fast Track.



23

Villars-sur-Glâne, Switzerland

Ref #: 4625

Category: Creche - Special Project



CONTACT OUR LAYDEX TEAM

BELFAST OFFICE

Call us: +44 28 9038 2223

Email us: sales@laydex.com

DUBLIN OFFICE

Call us: +353 01 6426600

Email us: sales@laydex.ie





Flooring Adhesives

Taking into account the advancement in all aspects of technology, adhesives are no exception. When considering which adhesive to use, there are lots of scenarios which must be taken into consideration when choosing the right adhesive for a specific floor covering.

Mapei has an extensive range of adhesives designed to ensure a successful installation is achieved along with the wellbeing of both installers and anyone in the vicinity of the fitting are not affected by any harmful chemicals in the adhesives.

Sustainability, low VOC's (Volatile Organic Compounds) and user friendly are commonly used words by manufacturers. Mapei researched such issues many years before most manufacturers, identifying the possible long term health consequences of using solvated products amongst others.

Mapei have a variety of adhesives suitable for a successful installation and to be achieved with the highest ECT Plus certification.

■ Ultrabond Eco 380

DESCRIPTION

A solvent-free, non flammable vinyl/PVC adhesive dispersed in water, with strong initial bond and long open time. Use for bonding PVC / vinyl, homogenous and heterogenous sheet or tile, semi-flexible vinyl tiles on to all kinds of internal, absorbent and moisture stable substrates normally used in building. Particularly suitable for use in environments subject to intense traffic and wheelchair use.



www.blauer-engel.de/uz113

MAIN FEATURES



LOW VOC EMISSIONS
IN INTERNAL ENVIRONMENTS



STRONG BOND

WHERE TO USE



NEW CONSTRUCTION
BUILDING



OLD CONSTRUCTION
BUILDING



SCHOOLS



COMMERCIAL
ENVIRONMENTS

TECHNICAL DATA

Consistency: Creamy paste
Colour: Light beige
Waiting time: 10 - 20 minutes
Open time: 60 - 70 minutes
Set to light foot traffic: 3-4 hours
Ready for use: 24 - 48 hours
Storage: 12 months. Protect from frost
Consumption: 200 - 300 g/m²
Packaging: 15 kg drums

■ Ultrabond Eco VS90 Plus

DESCRIPTION

Hard set, highly shear resistant, wet-bed dispersion adhesive, specific for PVC and rubber floorings and wall coverings on absorbent substrates. Also suitable as universal adhesive for all common resilient and textile floor covering types. For use on floors and walls in interior applications. Suitable on level and absorbent surfaces; underfloor heating systems. Stresses from chair castors according to EN 12529.



www.blauer-engel.de/uz113

MAIN FEATURES



LOW VOC EMISSIONS
IN INTERNAL ENVIRONMENTS



MULTIPLE USES

WHERE TO USE



NEW CONSTRUCTION
BUILDING



OLD CONSTRUCTION
BUILDING



SCHOOLS



COMMERCIAL
ENVIRONMENTS

TECHNICAL DATA

Consistency: Creamy paste
Colour: Beige
Waiting time: 0 - 10 minutes
Open time: 20 - 30 minutes
Set to light foot traffic: 3 - 5 hours
Ready for use: 24 - 48 hours
Storage: 12 months. Protect from frost
Consumption: 200 - 450 g/m²
Packaging: 5 and 15 kg drums

ECO TACK TX+

DESCRIPTION

Carpet tile tackifier for the non-permanent installation of carpet tiles. Allows the replacement of carpet tiles as and when required. Low emissions of VOC. Also suitable for the installation of loose lay LVT's.



www.blauer-engeLde/uz113

28

MAIN FEATURES



LOW VOC EMISSIONS
IN INTERNAL ENVIRONMENTS



HIGH COVERAGE

WHERE TO USE



NEW CONSTRUCTION
BUILDING



OLD CONSTRUCTION
BUILDING



SCHOOLS



COMMERCIAL
ENVIRONMENTS

TECHNICAL DATA

Consistency: Liquid

Colour: White/transparent

Open time: Permanently tacky

Set to light foot traffic: Immediately after laying

Ready for use: Immediately after laying

EMICODE: Very low emissions

Storage (protected from frost): 12 months

Application: Roller

Coverage per unit (approximate): 300 m² Roller (15 kg)

Packaging: 5 kg and 15 kg



PROJECT REFERENCE:
The Westin London City Hotel,
London

■ NOTES

30

31



DUBLIN OFFICE

Call us: +353 01 6426600
Email us: sales@laydex.ie

Unit 3, Allied Ind. Estate, Kylemore Rd,
Dublin 10, Ireland

BELFAST OFFICE

Call us: +44 28 9038 2223
Email us: sales@laydex.com

Units 4/5 Falcon Way, Adelaide Ind. Est.
Belfast, N. Ireland