



**EXPERTS IN WATERPROOFING**



**PRODUCT CATALOGUE**



**EXPERIENCE**



**CERTIFICATION**



**QUALITY PRODUCTS**



# Housing Development by Laydex Roofing Division



For all Roofing and Waterproofing  
Requirements **contact our expert team**  
**in Laydex Roofing Solutions**

For further information on products used for this project,  
visit [www.laydex.ie](http://www.laydex.ie) to contact our teams directly.

  
**EXPERTS IN WATERPROOFING**

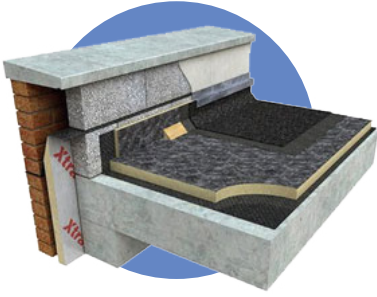
**Dublin**  
+353 01 642 6600  
[sales@laydex.ie](mailto:sales@laydex.ie)

**Belfast**  
+44 28 9038 2223  
[sales@laydex.com](mailto:sales@laydex.com)



*Rely on it.*

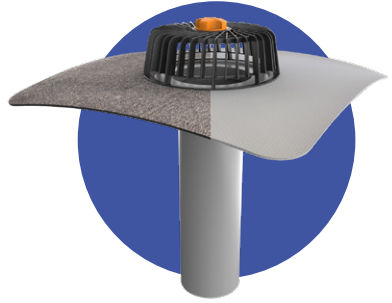




# 06

## PIR Insulation

- Aluminium Faced 6
- Glass Tissue Faced 7
- Bitumen Glass Tissue Faced 8



# 10

## Outlets for Bitumen & PVC Materials

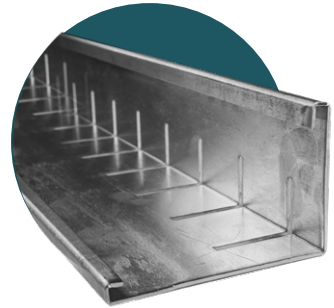
- Parapet Outlets 10
- Vent Pipe 10
- Vertical Outlets 11
- Swan Neck for Cable Access 11
- Leaf Guard 11



# 12

## Spray Adhesives

- Insulation Glue 12
- Primer 13
- Fleece Backed 14
- Hoses & Guns 15



# 16

## Roof Trims

- Parapet Edge Trims 16
- Termination Bars 16
- Counter Flashing Bars 16
- Liquid Trims 17
- Green Roof Gravel Trims 17
- Corner Pap Trim 17
- GRP Roof Trims 17





## 18 Tools

Hot Air Welders	18
Gas Torches	18
Rollers	19



## 20 Accessories

Adhesives	20
Silicones	23
Expanding Foam	23
PU Foam Gun	23
Helasto Ring & Levellers	24
Other Accessories	24
Roof Recovery	25
Pre-Formed Corners & Patches	25
EPDM	26

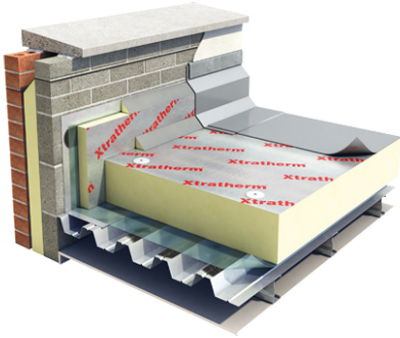


## 28 Green Roofing Systems

SedumExtra	28
Fixodrain® XD 20	29

# PIR Insulation

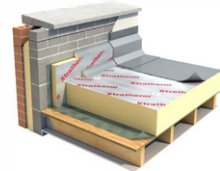
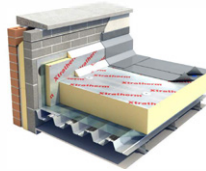
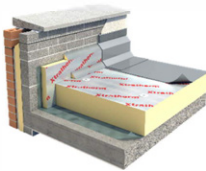
## Aluminium Faced



### XTRATHERM FR/ALU

Insulation for Mechanically Fixed Single Ply Waterproofing Systems. High performance foil faced Polyisocyanurate (PIR) insulation with a certified thermal conductivity as low as 0.022 W/mK.

### Construction - U-Value Tables



Membrane	Xtratherm FR-ALU	Vapour control layer	Concrete deck (200mm)
U-Value	0.21	0.20	0.15

Membrane	Xtratherm FR-ALU	Vapour control layer	Metal deck (0.7mm)
U-Value	0.21	0.20	0.15

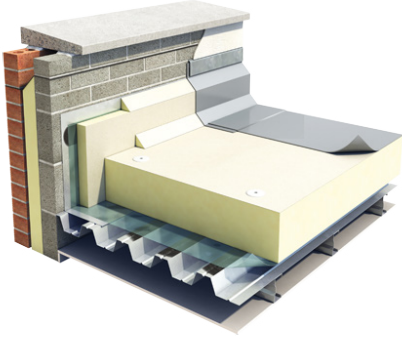
Membrane	Xtratherm FR-ALU	Plywood deck (18mm)	Air layer between joists (150mm)	Plasterboard (12.5mm)
U-Value	0.20	0.17	0.15	0.14

THICKNESS	U-VALUE	THICKNESS	U-VALUE	THICKNESS	U-VALUE
100mm	0.21	100mm	0.21	100mm	0.20
110mm	0.20	110mm	0.20	110mm	0.19
120mm	0.18	120mm	0.18	120mm	0.17
140mm	0.16	140mm	0.16	140mm	0.15
150mm	0.15	150mm	0.15	150mm	0.14

The U value indicated are indicative and are provided as guidance only. U-Values for the FR-ALU are based on the specific construction in which the product is installed and should be verified.

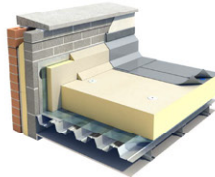
## Glass Tissue Faced



### XTRATHERM FR/MG

Insulation for Single Ply Fully Adhered / Partially Bonded Built-Up Felt Systems

### Construction - U-Value Tables



Membrane

Xtratherm FR-MG

Vapour control layer

Concrete deck (200mm)

Membrane

Xtratherm FR-MG

Vapour control layer

Metal deck (0.7mm)

Membrane

Xtratherm FR-MG

Plywood deck (18mm)

Air layer between joists (150mm)

Plasterboard (12.5mm)

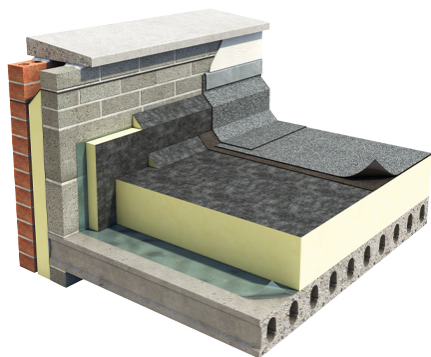
THICKNESS	U-VALUE
100mm	0.23
110mm	0.21
120mm	0.20
140mm	0.17
150mm	0.16

THICKNESS	U-VALUE
100mm	0.24
110mm	0.22
120mm	0.20
140mm	0.17
150mm	0.16

THICKNESS	U-VALUE
100mm	0.22
110mm	0.21
120mm	0.19
140mm	0.16
150mm	0.15

The U value indicated are indicative and are provided as guidance only. U-Values for the FR-ALU are based on the specific construction in which the product is installed and should be verified.

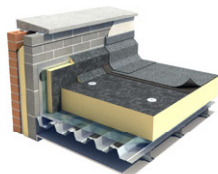
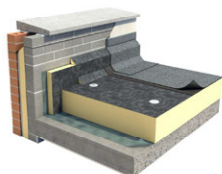
## Bitumen Glass Tissue Faced



### XTRATHERM FR/BGM

Insulation for Partially Bonded, Torched-on, Built-up Bituminous Felt Systems

### Construction - U-Value Tables



Membrane
FR-BGM
Vapour control layer
Concrete deck (200mm)

Membrane
FR-BGM
Vapour control layer
Metal deck (0.7mm)

Membrane
FR-BGM
Plywood deck (18mm)
Air layer between joists (150mm)
Plasterboard (12.5mm)

THICKNESS	U-VALUE
100mm	0.23
110mm	0.21
120mm	0.20
140mm	0.17
150mm	0.16

THICKNESS	U-VALUE
100mm	0.24
110mm	0.22
120mm	0.20
140mm	0.17
150mm	0.16

THICKNESS	U-VALUE
100mm	0.22
110mm	0.21
120mm	0.19
140mm	0.16
150mm	0.15

The U value indicated are indicative and are provided as guidance only. U-Values for the FR-ALU are based on the specific construction in which the product is installed and should be verified.





# Howth Yacht Club by Laydex Roofing Division

## FEATURED PRODUCTS

XTRATHERM FR ALU Insulation

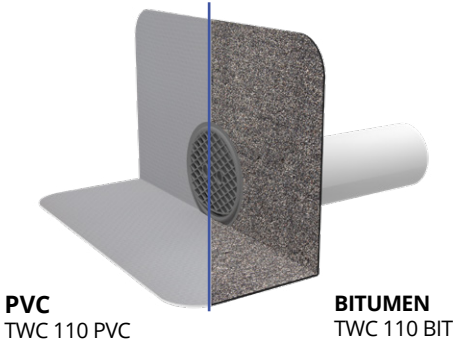
RESITRIX Waterproofing Membrane

RENOLIT ALKORPLAN F 35726 -  
Blue & Bright White Finish



# Outlets for Bitumen & PVC Materials

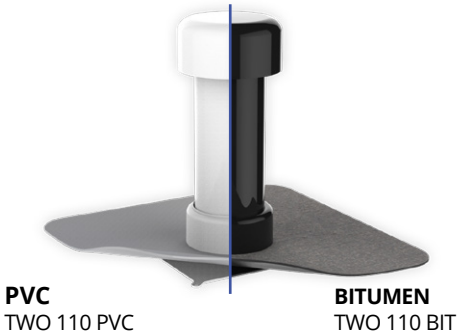
## Parapet Outlets



### ROUND GUTTER SPOUT

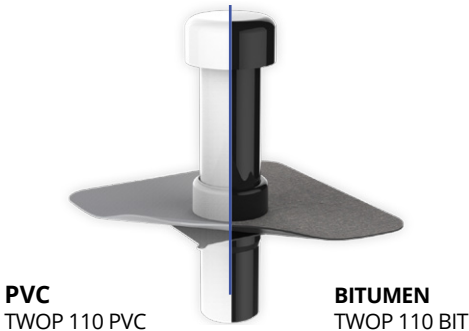
The round gutter spout with an integrated sleeve of a modified bitumen strip OR with an integrated sleeve of PVC membrane and a leaf guard. Length 600 mm, option of extension up to 2000mm on request.

## Vent Pipe



### ROOF VENT PIPE WITH HOOD

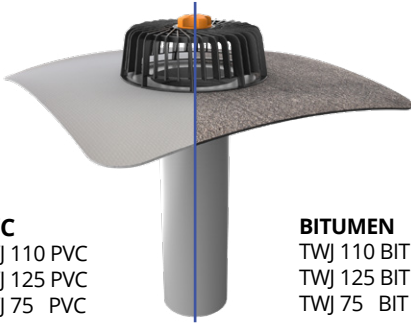
The roof vent with an integrated sleeve of PVC membrane OR with an integrated sleeve of a modified bitumen strip, including a rain cap. Height 300mm, option of extension up to 2000mm on request.



### SANITATION SEWERAGE VENT PIPE WITH HOOD

For connection to vent piping with an integrated sleeve of a modified bitumen strip OR PVC membrane, including a rain cap. A height above insulation of 300mm, a height below insulation of 200mm, option of extension up to 2000mm on request.

## Vertical Outlets



### PVC

TWJ 110 PVC  
TWJ 125 PVC  
TWJ 75 PVC

### BITUMEN

TWJ 110 BIT  
TWJ 125 BIT  
TWJ 75 BIT

### VERTICAL ROOF OUTLET

The extended single-wall roof outlet with an integrated bitumen sleeve OR PVC sleeve with a leaf guard. Single-wall, length option on request.

## Swan Neck for Cable Access



### PVC

TWP 50 PVC

### BITUMEN

TWP 50 BIT

### SWAN NECK FOR CABLES

The penetrations for cables with an integrated bitumen sleeve OR with an integrated sleeve of PVC membrane. Height above insulation 300mm, depth under insulation 200mm, option of extension up to 2000mm on request.

## Leaf Guard



TWLEAF

The leaf guard for roof outlets and outlet attachments. Suitable for outlets up to DN 125, from polyamide PA6, black colour.

# Spray Adhesives

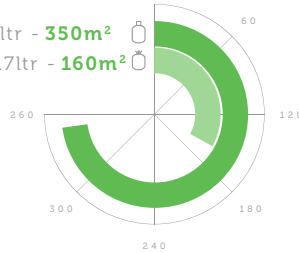
## Insulation Glue



Square metre coverage (m<sup>2</sup>):

22ltr - 350m<sup>2</sup>

13.7ltr - 160m<sup>2</sup>



### QDEK 3001 LOW TEMP PU ROOF INSULATION ADHESIVE

A single-part moisture-cure urethane foam adhesive designed specifically for bonding insulation boards in flat roof applications. Successful bonds are achieved when bonding ISO boards, tissue faced insulation boards, PIR and PUR boards to a variety of roof decks including concrete, plywood and cementitious boards. QDEK® 3001 also works with EPS or XPS (expanded and extruded polystyrene) and will adhere insulation boards to existing felt for re-roof applications.

**APPLICATION TYPE:**



1 sided

**OPEN TIME\*:**



10 mins

**FLASH-OFF TIME\*\*:**



5 mins

**SPRAY TYPE:**



Foam Beaded

**GUN TYPE:**



Bead Gun

**HOSE TYPE:**



4m S/S Braided C/W Valve  
8m S/S Braided C/W Valve

**COLOUR**



Green

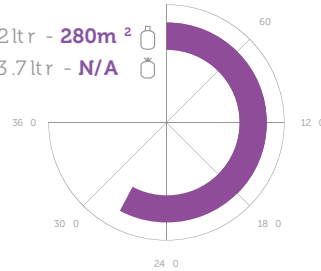
## Primer



Square metre coverage (m<sup>2</sup>):

22ltr - 280m<sup>2</sup>

13.7ltr - N/A



### QDEK 2400 SELF ADHESIVE MEMBRANE PRIMER

A solvent based primer based on synthetic rubber and resins, and is specifically designed for use with all self-adhesive membranes and vapour barriers. QDEK® 2400 Membrane Primer can be applied to metallic substrates, bituminous materials, wood based materials, and insulation boards. QDEK® 2400 once applied to the roof deck, is dry within 1-2 minutes and can be walked on without transfer to the soles of safety tools.

#### APPLICATION TYPE:



1 sided

#### OPEN TIME\*:



30 mins

#### FLASH-OFF TIME\*\*:



2 mins

#### SPRAY TYPE:

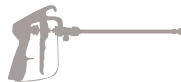


Web Spray

#### GUN TYPE:



Detail Gun



Field Gun

#### HOSE TYPE:



4m Black Rubber  
8m Black Rubber

#### COLOUR



Black

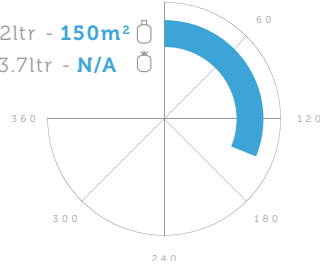
## Fleece Backed



Square metre coverage (m<sup>2</sup>):

22ltr - 150m<sup>2</sup>

13.7ltr - N/A



### QDEK 2352 NC FLEECE-BACKED SINGLE SIDED FIELD AREA ADHESIVE

QDEK® 2352 is a non-chlorinated, polyurethane spray adhesive, designed to be applied single sided to the roof deck only. It has been specifically designed for bonding all fleecebacked single ply membranes including TPO/FPO, EPDM and PVC, to various roof decks such as insulation boards, concrete, plywood, cementitious boards and existing asphalt/bituminous surfaces. QDEK® 2352 sprays in a unique snowflake spray pattern, designed to give a slight foaming effect to droplets on the surface so that the adhesive keys with the fleece or scrim backing in the membranes for optimum adhesion performance.

**APPLICATION TYPE:**



1 sided

**OPEN TIME\*:**



20 mins

**FLASH-OFF TIME\*\*:**



1-2 mins

**SPRAY TYPE:**



Snowflake Spray

**GUN TYPE:**



Field Gun

**HOSE TYPE:**



4m PU MB/HT

**COLOUR**



Red



## Hoses & Guns



### 4 & 8 METRE BLACK RUBBER HOSE

This standard rubber coated hose is highly flexible, and won't wear out after repeated uses. Use the 4m and 8m spray hose in heavy industrial situations and you'll enjoy great and consistent performance. Even when used day-in and day-out, the hose will maintain excellent flexibility and durability. And with an 8m length, it's suitable for almost any adhesive job.



### STAINLESS STEEL BRAIDED HOSE WITH VALVE 4 & 8 METRE

Sometimes you need a spray hose with added durability and strength. Enter our 4M/8M spray hose with a stainless steel braided valved C/W valve, designed specifically for Tensor products. With this stainless steel braided valved C/W valve spray hose, you'll enjoy durability and high-quality results for any adhesive job



### QDEK DETAIL GUN

Designed for applying adhesive onto smaller areas where close attention to adhesive coat weight is critical prior to the bonding of waterproofing membrane or self-adhesive VCL's.



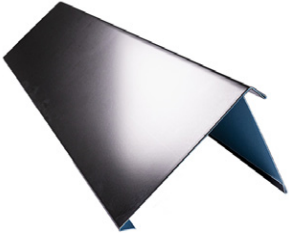
### QDEK FIELD SPRAY GUN

Used for applying adhesive across large field areas. The long wand eliminates the need for users to bend/kneel down whilst applying adhesive.

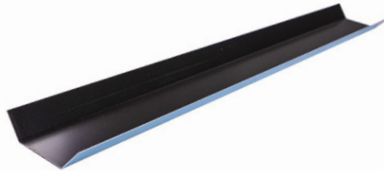
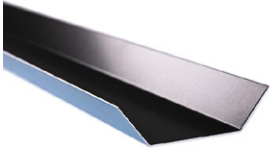
# Roof Trims

Improve Edge Detail Work on Flat Roofs. Easy fit roof trims will simplify edge detail on flat roofs. Once installed they will secure the membrane to the roof edge and improve the overall appearance of the roof.

## Parapet Edge Trims



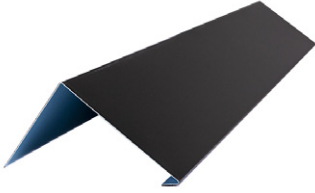
## Termination Bars



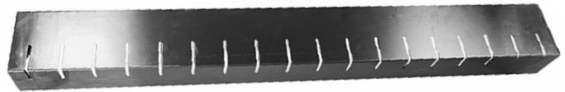
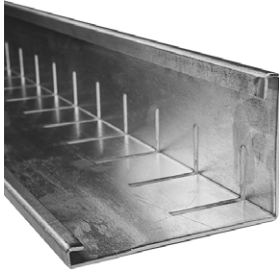
## Counter Flashing Bars



## Liquid Trims



## Green Roof Gravel Trims



## Corner Pap Trim



## GRP Roof Trims



### **SIMPLIFY & IMPROVE EDGE DETAIL WORK ON FLAT ROOFS**

Easy fit roof trims will simplify edge detail on flat roofs. Once installed they will secure the membrane to the roof edge and improve the overall appearance of the roof.

# Tools

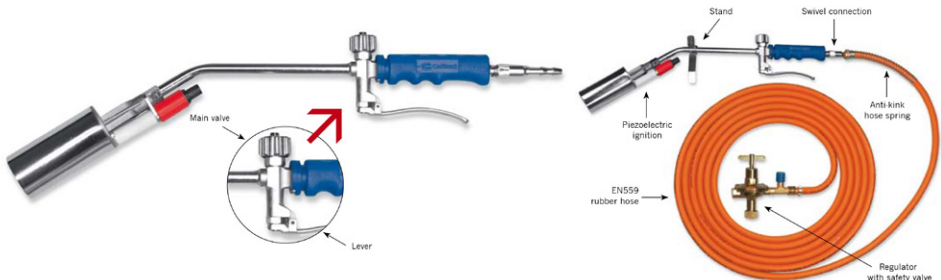
## Hot Air Welders



### LEISTER TRIAC ST - HOT AIR GUN

An intelligent heat gun suited for job sites that require plastic to be welded and/or molded. Designed to meet the demands of experts in various industries: With the intelligent e-Drive control unit, regulation of temperature settings between 40 and 620 °C (104 - 1148 °F) and the air volume can be achieved independently. The digital display shows the current setting values. This high-quality manual welding device is designed to weld and mold a variety of plastics.

## Gas Torches



### CALLONI GAS TORCHES

This torch has been specifically designed and made for the application of modified bitumen membranes. Thanks to its powerful flame, this torch allows very good performances and a high output. It has been designed paying the utmost attention to safety, health and environment, also taking into consideration ergonomic factors and noise levels. The whole range is available both in the standard version and with optional accessories.

## Rollers



### SILICONE ROLLER

40mm silicone roller with ergonomic wooden handle. Stainless steel (Penny) wheel with a ball bearing mechanism.



### BRASS CORNER ROLLER

6mm brass material tool with ergonomic wooden handle to weld awkward details.



### WELD TESTING PROBE

Tool to check the welded seams with rubber handle - Single Ply Flat Roof EPDM/TPO/PVC Weld

# BATTEN DOWN THE HATCHES

with BOND IT Bitumen and Weatherproofing Products





# Accessories

## Adhesives



### BOND IT BITUMEN PRIMER

Highly Penetrative, Bituminous Priming Solution for priming surfaces prior to the application of bituminous materials and flashing tapes.



### BOND IT BITUMEN PAINT

Solvent-Borne, Bituminous Black Paint for the waterproofing and weather protecting of steelwork and concrete. Protection of many building materials.



### BOND IT TROWEL MASTIC

Multi-Purpose, Trowel Grade Material for Waterproofing, Stopping, Bedding, Pointing and Sealing. Ideal for filling cracks and holes and cures to give a strong compound.



### BOND IT ALUMINIUM SOLAR REFLECTIVE PAINT

A light/heat reflective coating. Providing protection against heat gain and solar degradation. Suitable for the refurbishment of aged steel roofs.



### BOND IT ALL WEATHER ROOFING COMPOUND

General purpose waterproof coating for all common roofing surfaces including mastic asphalt, roofing felt, corrugated iron, cement, slates, lead, copper, tin and zinc.



### BOND-IT RUBBER BITUMEN EMULSION

Resistant to extreme heat and cold. A solvent-free, rubberised bitumen emulsion which dries to a tough, black coating providing a highly effective cold-applied, damp-proof membrane in sandwich constructions.



### BOND IT SELF ADHESIVE FLASHING TAPE

Self-Adhesive Flashing Tape for General Repairs and Sealing. Designed for use as flashing on flat and pitched roofs, on parapets and chimney stacks.



### ROOF-MATE ROOF & GUTTER SEALANT

A polymerically reinforced lap jointing sealant and adhesive used to prevent leaks in gutters and downpipes. Forms a flexible seal.



### BOND IT MEGA STIK

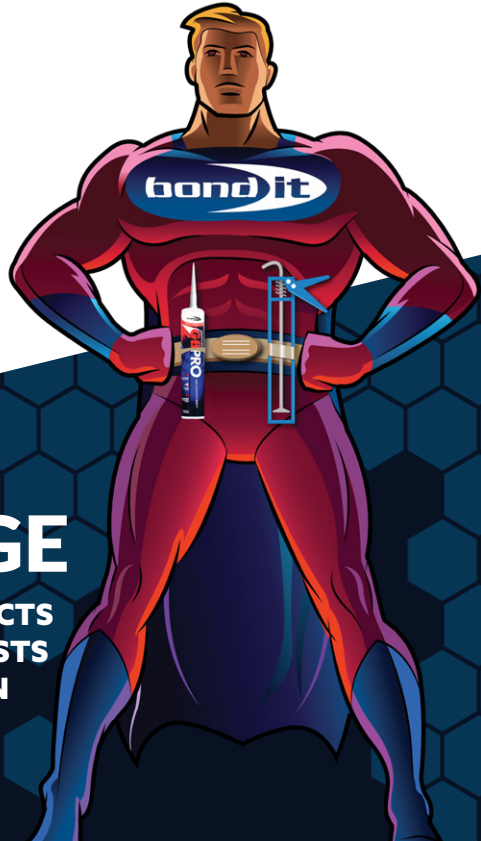
PU adhesive for installing insulation boards, plasterboard and roof decking. The cured adhesive is an excellent heat insulator.



### GRIPBOND PRO

A fast bonding, multi-purpose, non-slumping, instant grab adhesive with good gap-filling properties even on uneven surfaces.

**PRO RANGE**  
PROFESSIONAL PRODUCTS  
MADE BY PERFECTIONISTS  
USED BY CRAFTSMEN





## BOND IT ASTRO PRO

### Artificial Grass Adhesive Seaming Tape

A laminated geotextile seaming tape for jointing artificial grass carpets. Strong, rot resistant and impervious to moisture, Astro Pro Seaming Tape consists of two plies of non-woven fabric bonded together with a strong adhesive. The back layer is smooth and waterproof whilst the surface face has a more open structure to aid bonding.



## BOND IT ASTRO PRO

Artificial grass adhesive. A tough, elastic hybrid seaming adhesive for the installation of artificial grass surfaces. A superior adhesive suitable for use inside and out, in all weather conditions. Has excellent bonding properties even on wet surfaces. Simple application; Ideal for maintenance and repair work.

**Artificial grass  
the preferred choice  
over natural grass  
throughout Ireland.**



Get specialist advice on our full range of **high-quality artificial grass.**

Contact our team at [sales@laydex.ie](mailto:sales@laydex.ie)

## Silicones



### BOND IT HT30

Acetic curing silicone specifically designed for high temperature use, it is UV resistant and weatherproof.

After curing HT30 will resist temperatures of 250°C permanently.



### ULTI-MATE BUILDERS SILICONE

Low modulus neutral cure builders silicone sealant.

Suitable for internal and external applications. Primer-less adhesion to most construction materials and remains flexible for up to 25 years.



### RENOLIT ALKORSEAL

High quality construction silicone. Alkorseal has good adhesion to concrete, brickwork, metals and many other materials. Complementing the durability of the Renolit waterproofing system.

## Expanding Foam



### BOND IT B3 FOAM

B3 grade expanding polyurethane foam.

Quick, economic and easy to apply. Improves draught and heat insulation, fills irregular gaps, fixes framework and deadens sound.



### BOND IT MEGA FOAM

PU expanding foam gun and aerosol in one can.

Quick, economic and easy to apply for fitting doors, windows and insulating pipes and filling gaps. Can be used at any angle through 360°.

## PU Foam Gun



### PROFESSIONAL GUN

Top quality metal guns for use with gun grade PU expanding foams and adhesives.

## Helasto Ring & Levellers



### HELASTO RING & LEVELLERS

Support ring for concrete pavers with leveling adjustment. With Al-Safwa Helasto-Ring, the pavement does not touch the waterproofing blanket, but is separated from it by a hollow space; in this way, the pavement can expand and contract without damaging the water-tight blanket.

## Other Accessories



### POLYTHENE DPM BUILDERS FILM

We stock a wide range of polythene damp proof membrane materials suitable for a wide variety of construction applications.

POLYTHENE 1200 Gauge



### BOND IT PATINATION OIL

Protective coating for new and restored leadwork specially designed to minimize unsightly staining on newly applied lead and the materials fixed below it.

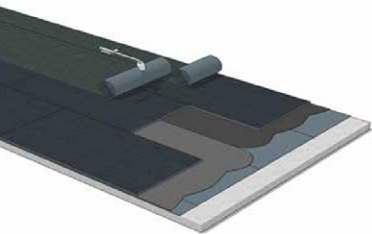


### PRATIKO MASTIC

Bituminous Mastic for Repairs, Sealing & Joins. Pratico Mastic is a flexible bituminous mastic reinforced with synthetic fibres which, once dry, forms a plasticized layer with excellent adhesion.

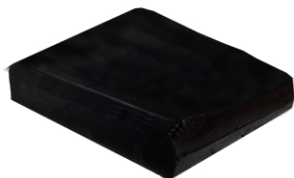


## Roof Recovery



### PLUVITEC PROTECTION BOARD

Resists and protects against normal site traffic. The perfect re-roofing solution to overlay, upgrade and protect prior to a new waterproofing solution being installed. Very high resistance to puncture. Water impermeable.



### BITUMEN BLOCK

An adhesive and waterproofing mass, made of modified distilled bitumen and polymers (APP type) highly resistant to ageing. Easy melting bonding Bitumen. Suitable for roofing application. Ideal for trades people and for DIY.

## Pre-Formed Corners & Patches



### PLUVITEC PRE-FORMED BITUMEN CORNERS

Reliable and economical. The easy installation of the corners and the sleek design makes them the ideal choice for securing corners in your roofing system. Available in both internal and external options.



### RESITRIX CORNERS FORMATION

Finishing roof edges in the attic area, including corner formation, with Resitrix SK W Full Bond, fully self-adhesive. Available in both internal and external options.



### RESITRIX ROUND PATCHES

Enables quick and convenient formation of internal and external corners. The shaped pieces comprise a circle with a rounded cut-out notch, a full circle and an oval tongue.

## EPDM



### HERTALAN EPDM STRIP MEMBRANE

Ideal solution for façade applications with Hertalan EPDM strips you opt for quality, flexibility and convenience. You can work on virtually any substrate. That makes Hertalan EPDM strips the ideal solution for Damp Proof Course applications in cavity walls, around window frames and in curtain walls. Sizes from 150mm to 500mm wide.



### HERTALAN KS137 CONTACT ADHESIVE

Specially for Adhering EPDM Membranes. A ready-for-use contact adhesive which has been developed especially for adhering EPDM membranes both vertically and horizontally onto surfaces such as wood, bitumen, masonry material, lead and suitable faced rigid thermal insulation boards, etc.



### HERTALAN FS14 ADHESIVE PASTE

High-quality adhesive glue for façade application. Hertalan FS14 is a high-quality adhesive glue for façade application. This sealant can be used on both horizontal and vertical surfaces. Coverage approx. 7 linear metres for a cartridge (pea sized bead).

***hertalan***<sup>®</sup>  
the Waterproof Solution



# RELIABLE ROOF WATERPROOFING FOR ALL GREEN ROOF SYSTEMS

In creating RESITRIX® SK W FULL BOND, Carlisle Construction Materials developed an EPDM roof waterproofing membrane specifically for all kinds of roof gardens and green roof systems.



FULL BOND

BLACK

Contact our team at [sales@laydex.ie](mailto:sales@laydex.ie)





# Green Roofing Systems

## SedumExtra



### SEDUMEXTRA TRAY

The SedumExtra trays, which include 8-10 different varieties of sedums, are grown in a specially developed mineral substrate. Due to the high quality mineral substrate we can guarantee long-lasting results for your green roof. The SedumExtra tray has an easy-click-system so installation is very simple.



### SEDUM EXTRA PLUG PLANTS

The SedumExtra plug plants are grown in a specially developed mineral substrate which ensures optimal attachment to the green roof substrate. These plugs are grown in trays of 40, 66, 96 or 104 number per tray, depending on variety.



### SEDUMEXTRA STEKKEN

Provided with weed-free and clean starting material. Due to this stock nursery SedumExtra is able to produce custom-made vegetation blankets. Very easy and quick to install by sowing the cuttings. Low costs. Best results are achieved by Spring and Autumn sowings. Water after installation to avoid cuttings getting blown away.



### SEDUMEXTRA VEGETATION BLANKETS

The SedumExtra vegetation blanket contains a minimum of 8 varieties of small and large leaved Sedum and is grown on a bio-degradable coconut fiber mat, which is covered with a specialised RAG certified, Green Roof substrate. Our SedumExtra vegetation blankets will have achieved a minimum of 95% vegetative coverage when delivered and will give an instant effect for your roof or garden. The SedumExtra vegetation blankets are produced as per the FLL guidelines.

## Fixodrain® XD 20



### GREEN ROOF WITH FIXODRAIN® XD 20

The larger the roof area, the greater the pressure on your budget. For this reason, ZinCo has created a single product that incorporates a number of the functional layers found in a green roof build-up. Supplied in rolls and with the filter sheet already attached, Fixodrain® XD 20 offers a protective, drainage, water retaining and ventilation layer in one. The system build-up with Fixodrain® XD 20 is particularly suitable for the expansive area of an extensive green roof – and even for inverted roofs.

## EXTENSIVE GREEN ROOF SEDUM CARPET. The Proven Ecological Protective Layer.





## **EXPERTS IN WATERPROOFING**

**Laydex Roofing Division** supply the most comprehensive range of waterproofing systems in Ireland for commercial, industrial and domestic projects.

In conjunction with industry leading manufacturers such as Pluvitec, Renolit, RESITRIX®, Kemper and Index, we provide the **project specifier** and the **roofing contractor** with high quality **waterproofing solutions alongside extensive technical support** ranging from on-site roofing surveys to project specific full build up specification generation.

**Find more about our Roofing Projects at [www.laydex.ie](http://www.laydex.ie)**

Through our **Roofing Division** we supply a portfolio of roofing products for commercial, industrial & domestic projects.



Co. Dublin



# Our Projects

Kirwans Lane, Galway

Apartment Block Roof Recovery

Green Roof

Private House - Belgooly

Roof Refurb of the Restaurant at DCU

Howth, Co. Dublin

Howth Yacht Club

Contemporary Metal Cladding Project

Blackrock, Co. Cork

Church Rd, Cork

Housing Development

**Laydex**





# LET'S BUILD THE FUTURE TOGETHER

## DUBLIN

+353 01 642 6600

[sales@laydex.ie](mailto:sales@laydex.ie)

## BELFAST

+44 28 9038 2223

[sales@laydex.com](mailto:sales@laydex.com)

[www.laydex.ie](http://www.laydex.ie)

GET TO KNOW MORE ABOUT OUR BRANDS @LAYDEX in [f](#) [@](#) [▶](#)