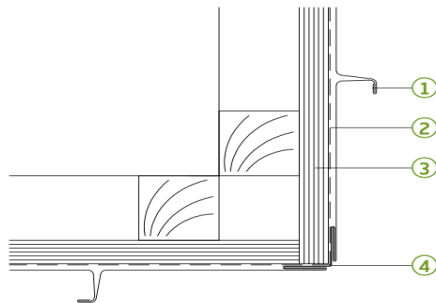
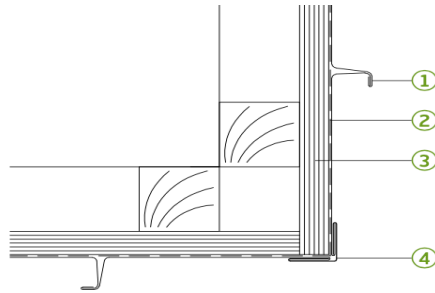
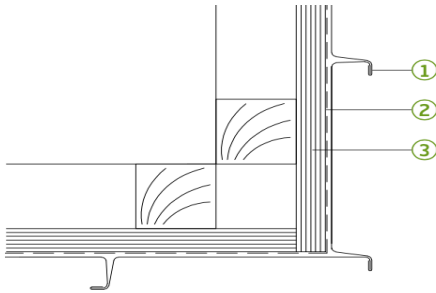




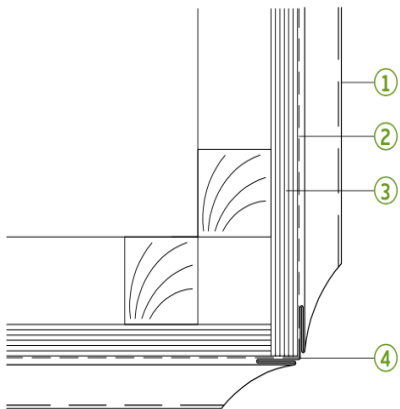
Lindab Ireland
 Nangor Rd Bus Pk
 Nangor Rd
 Dublin 12
 014568200

SRP Detailing for wall cladding.

External Corner:

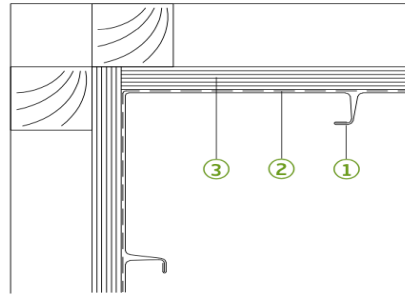
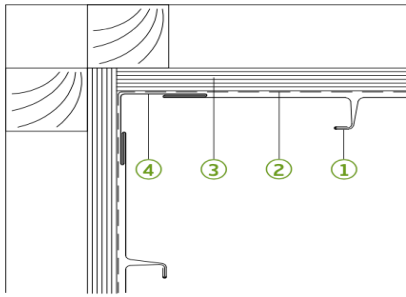


- 1. GreenCoat PLX vertical angle seam.
- 2. ISO-Mat Pro® Breather Membrane.
- 3. 18 mm WBP plywood.
- 4. External corner flashing.

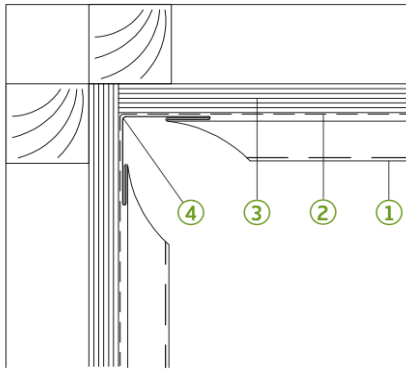


- 1. GreenCoat PLX horizontal angle seam.
- 2. ISO-Mat Pro® Breather Membrane.
- 3. 18 mm WBP plywood.
- 4. External corner flashing.

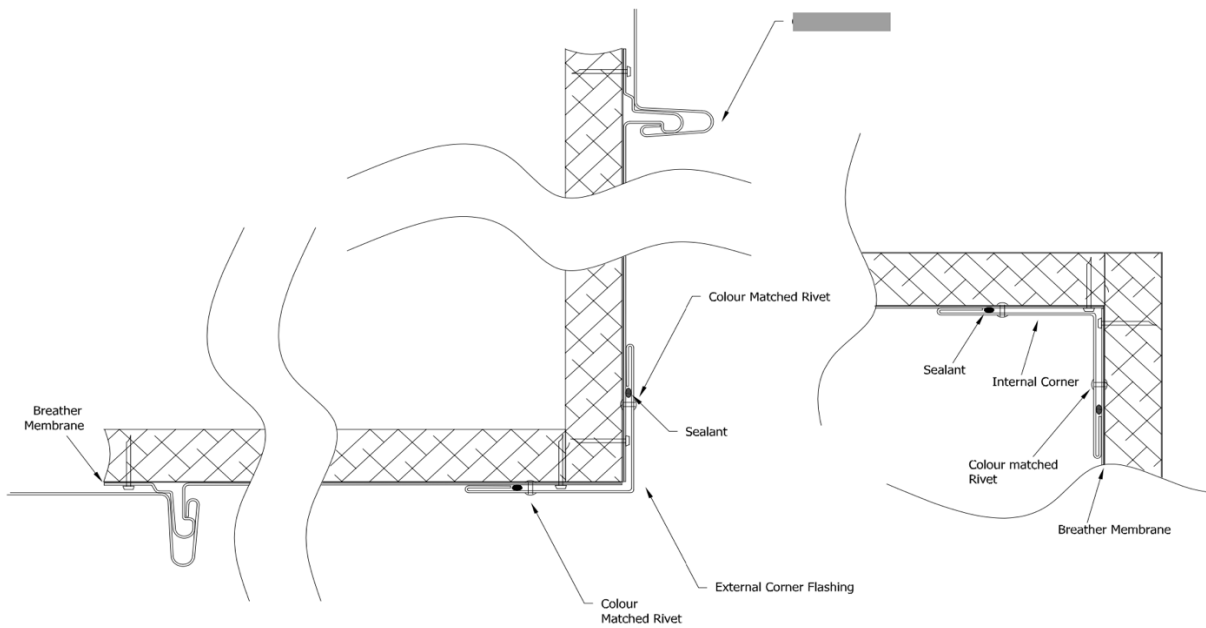
Internal Corners:



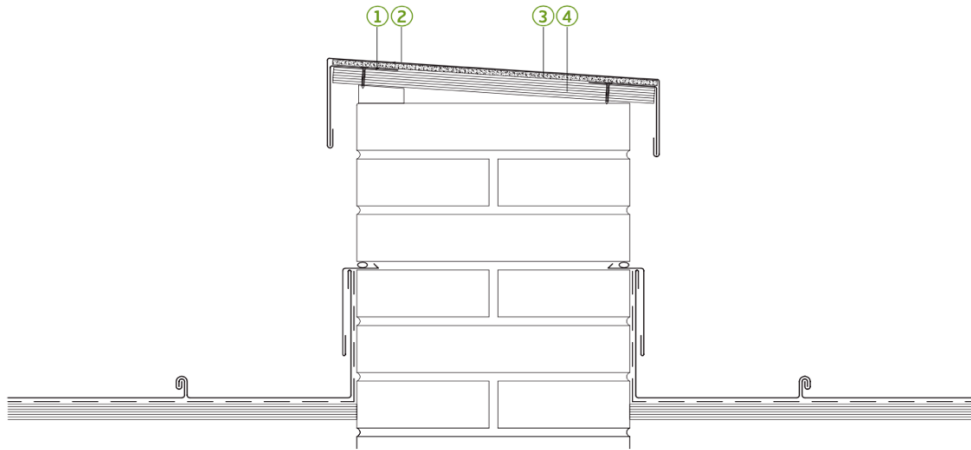
1. GreenCoat PLX vertical angle seam.
2. ISO-Mat Pro® Breather Membrane.
3. 18 mm WBP plywood.
4. Internal corner flashing.



1. GreenCoat PLX horizontal angle seam.
2. ISO-Mat Pro® Breather Membrane.
3. 18 mm WBP plywood.
4. Internal corner flashing.

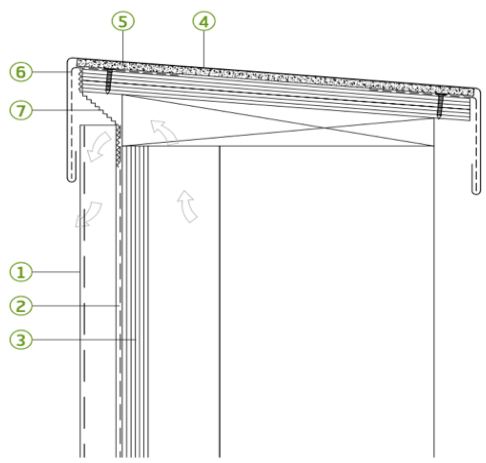


Coping:

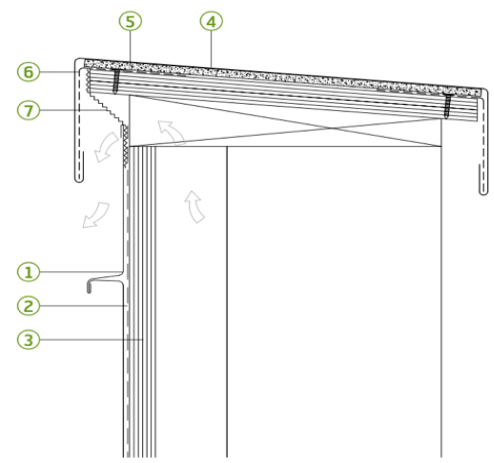


- 1. Continuous Liner.
- 2. TopClip Capping in GreenCoat PLX.
- 3. ISO-Mat Metal® structured underlay.
- 4. Plywood Substrate or similar.

Coping:

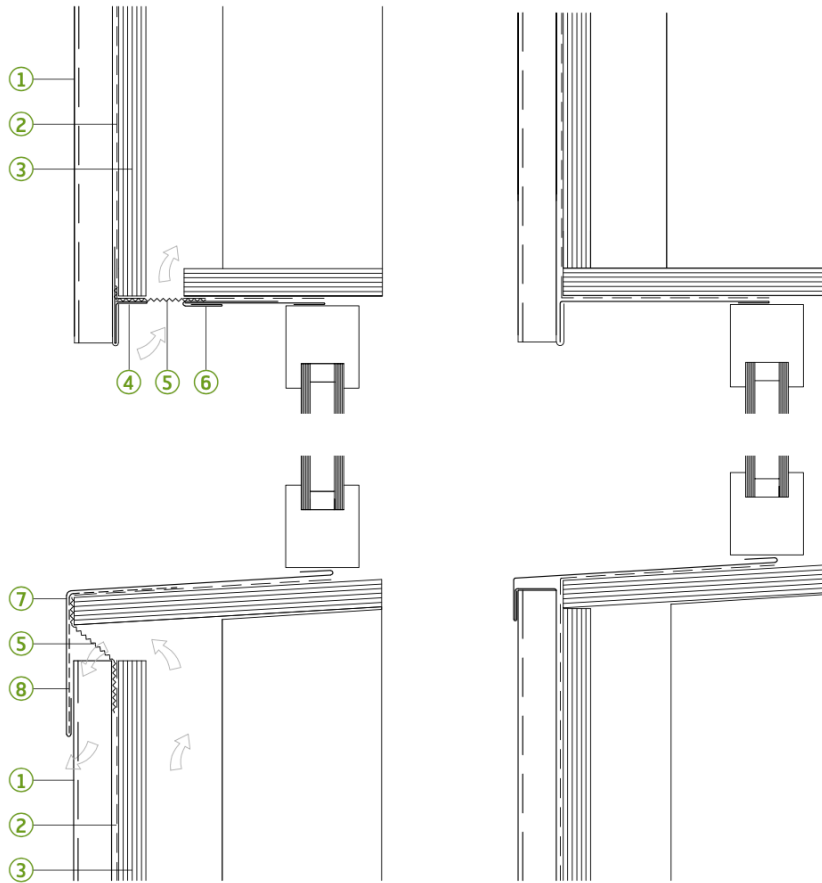


- 1. GreenCoat PLX vertical angle seam.
- 2. ISO-Mat Pro® Breather Membrane.
- 3. 18 mm WBP plywood.
- 4. GreenCoat PLX topclip capping.
- 5. ISO-Mat Metal® structured underlay.
- 6. Capping liner.
- 7. Insect mesh.



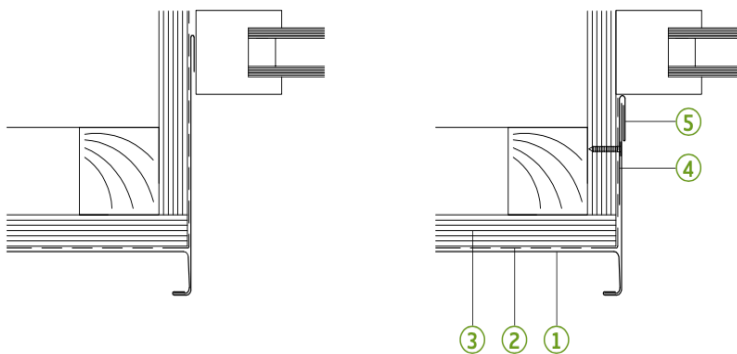
- 1. GreenCoat PLX horizontal angle seam.
- 2. ISO-Mat Pro® Breather Membrane.
- 3. 18 mm WBP plywood.
- 4. GreenCoat PLX topclip capping.
- 5. ISO-Mat Metal® structured underlay.
- 6. Capping liner.
- 7. Insect mesh.

Window vertical Seam 1A:



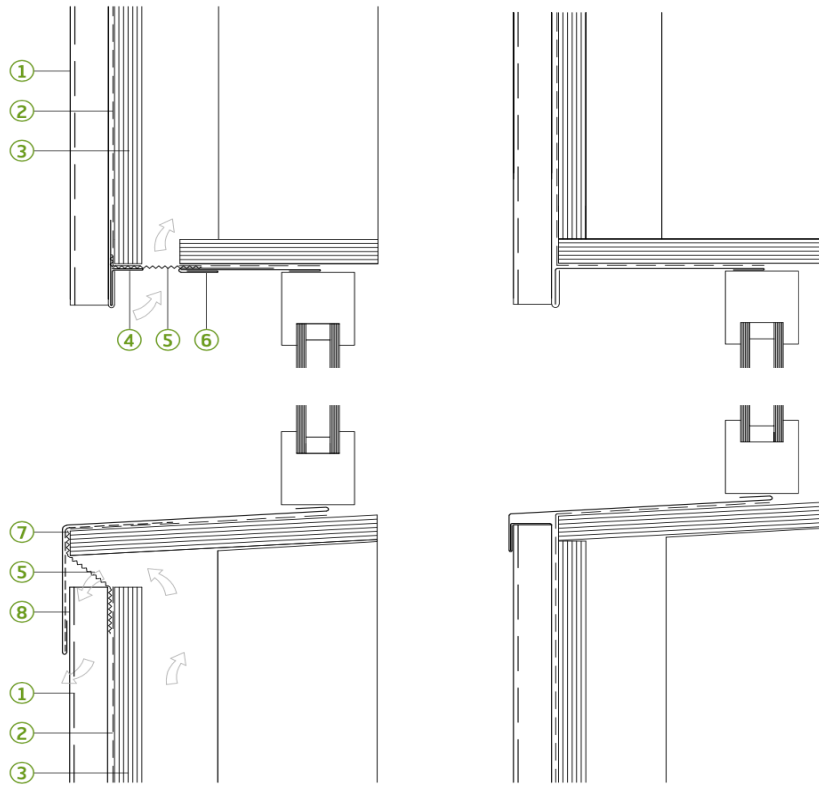
1. GreenCoat PLX vertical angle seam.
2. ISO-Mat Pro® Breather Membrane.
3. 18 mm WBP plywood.
4. Base flashing.
5. Insect mesh.
6. Abutment clip.
7. Cill flashing.
8. Flashing liner.

Window Vertical Seam 1B:

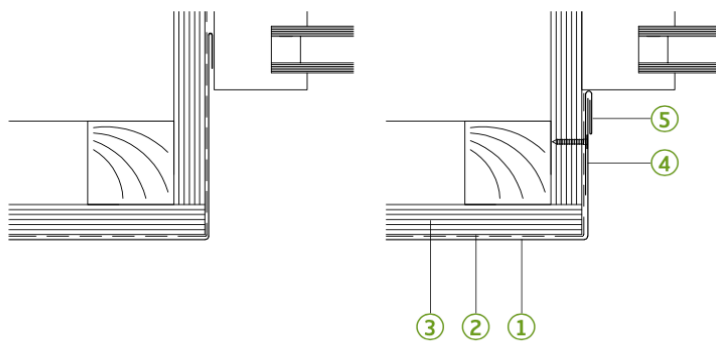


1. GreenCoat PLX vertical angle seam.
2. ISO-Mat Pro® Breather Membrane.
3. 18 mm WBP plywood.
4. Reveal flashing.
5. Abutment clip.

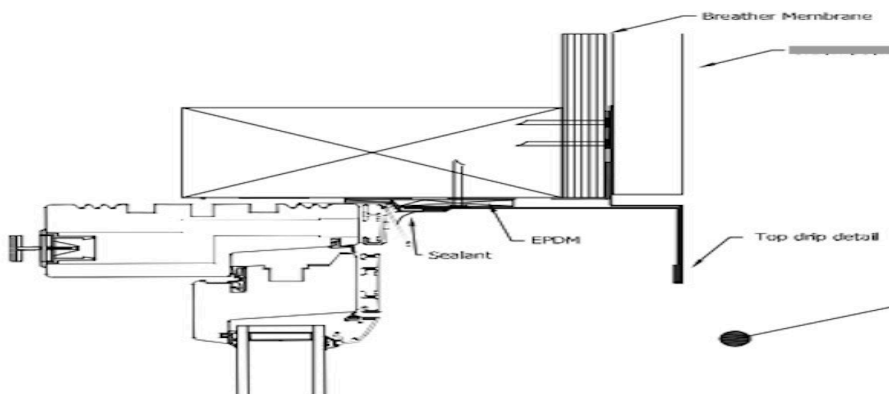
Window Vertical seam 2 A:



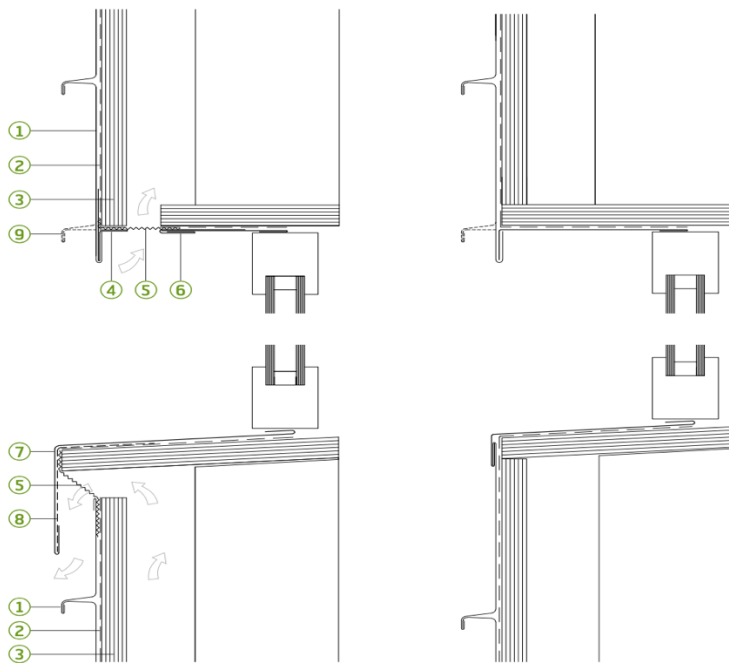
1. GreenCoat PLX vertical angle seam.
2. ISO-Mat Pro® Breather Membrane.
3. 18 mm WBP plywood.
4. Base flashing.
5. Insect mesh.
6. Abutment clip.
7. Cill flashing.
8. Flashing liner.



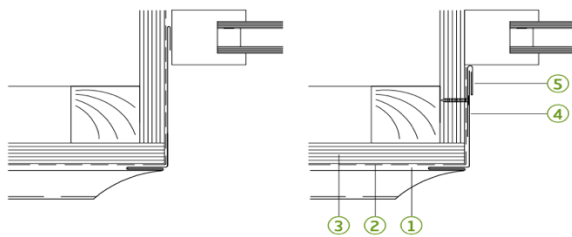
1. GreenCoat PLX vertical angle seam.
2. ISO-Mat Pro® Breather Membrane.
3. 18 mm WBP plywood.
4. Reveal flashing.
5. Abutment clip.



Window Horizontal Seam:



- 1. GreenCoat PLX horizontal angle seam.
- 2. ISO-Mat Pro® Breather Membrane.
- 3. 18 mm WBP plywood.
- 4. Base flashing.
- 5. Insect mesh.
- 6. Abutment clip.
- 7. Cill flashing.
- 8. Flashing liner.
- 9. Optional seam position according to setting out.



- 1. GreenCoat PLX vertical angle seam.
- 2. ISO-Mat Pro® Breather Membrane.
- 3. 18 mm WBP plywood.
- 4. Reveal flashing.
- 5. Abutment clip.

Window Cill Detail:

