

westex.

FLOORING EXCELLENCE



AXMINSTER
BESPOKE COLLECTION

ABOUT US

UK manufacturer of premium carpets for almost 40 years, at Westex Carpets we combine excellence in innovation, performance and design to create durable, luxury and resilient 80/20 wool nylon and 100% wool carpets.

Based in Cleckheaton, West Yorkshire in the heart of England's traditional wool textile industry, we control each process from design to delivery, including our hallmark special dye service across both commercial and residential markets. With our roots firmly planted in the sheep farming and textile heartland of West Yorkshire in the UK, Westex Carpets' contemporary approach draws on our industrial heritage and traditional wool industry.

We work with designers, contractors and end-users to offer a complete flooring solution for any residential or commercial interior and can now offer an endless selection of design and colour for all flooring needs.

westex.
FLOORING EXCELLENCE

WESTEX BESPOKE AXMINSTER



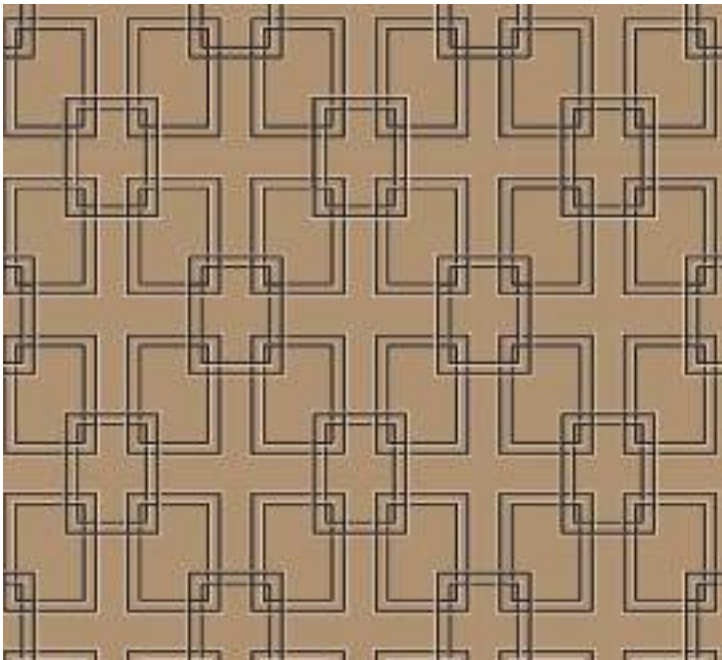
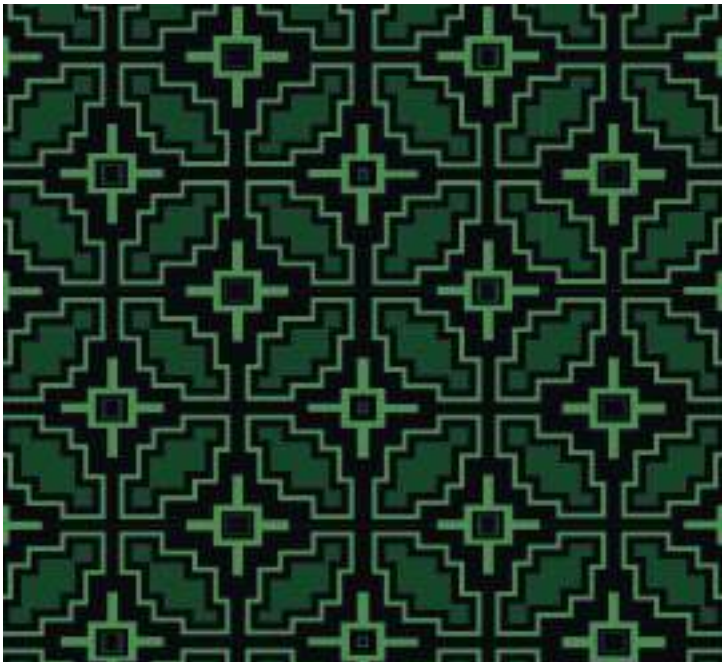
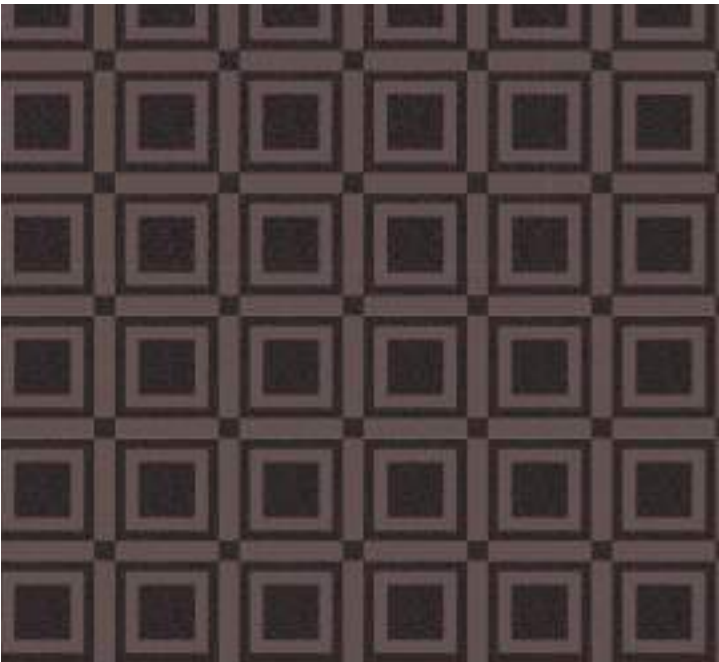
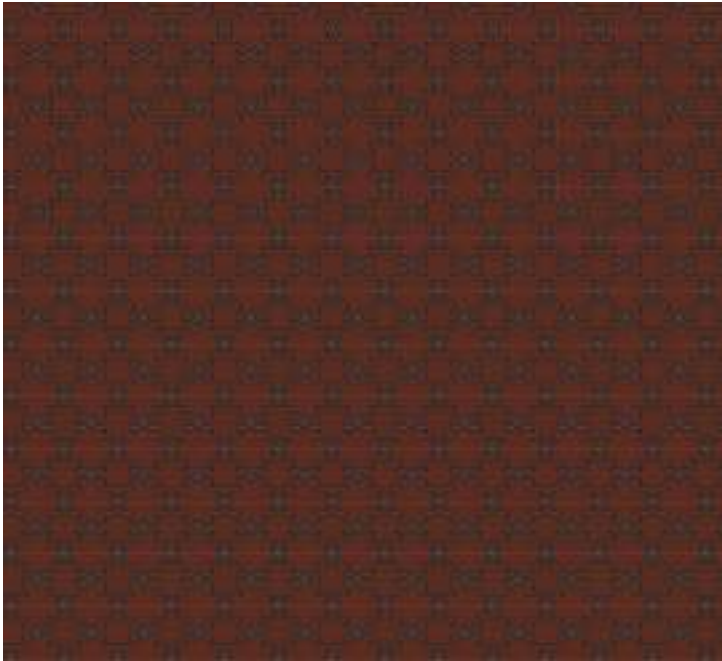
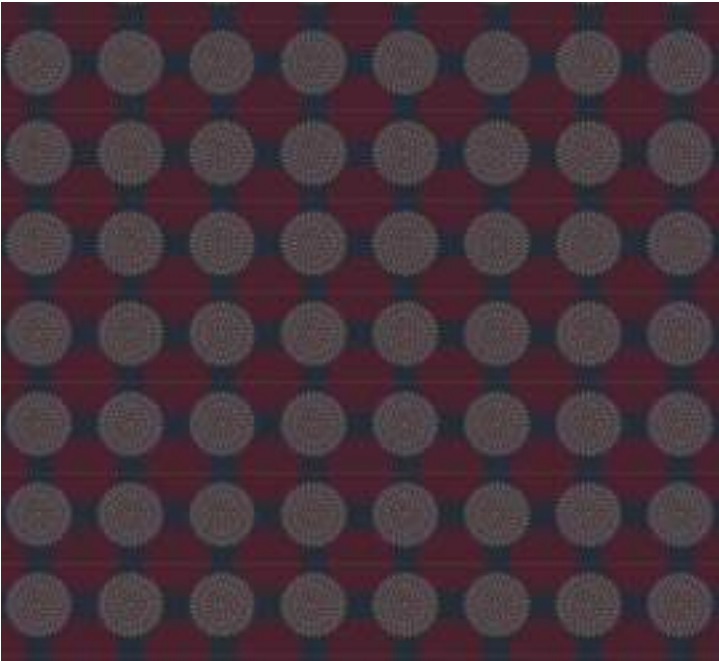
In today's world, carpets are so much more than the purely functional value they have been in the past. Carpets offer a defining foundation for interior schemes in homes, workplaces and for high traffic areas such as Hotels, Ballrooms, Banqueting rooms and Restaurants, there is no better carpet type than an Axminster woven carpet.



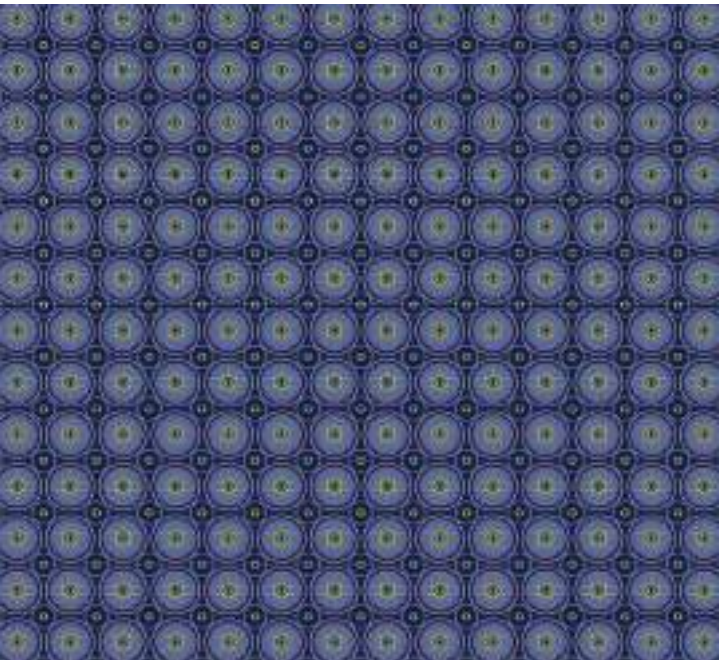
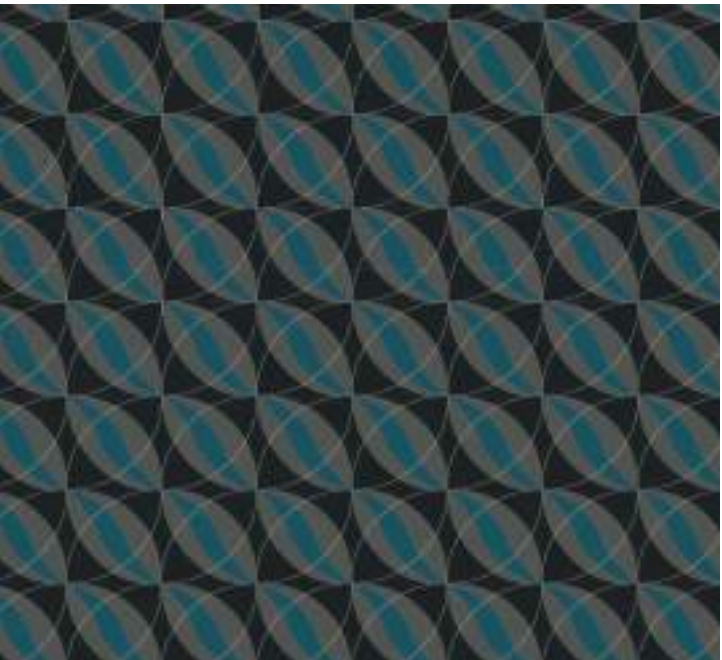
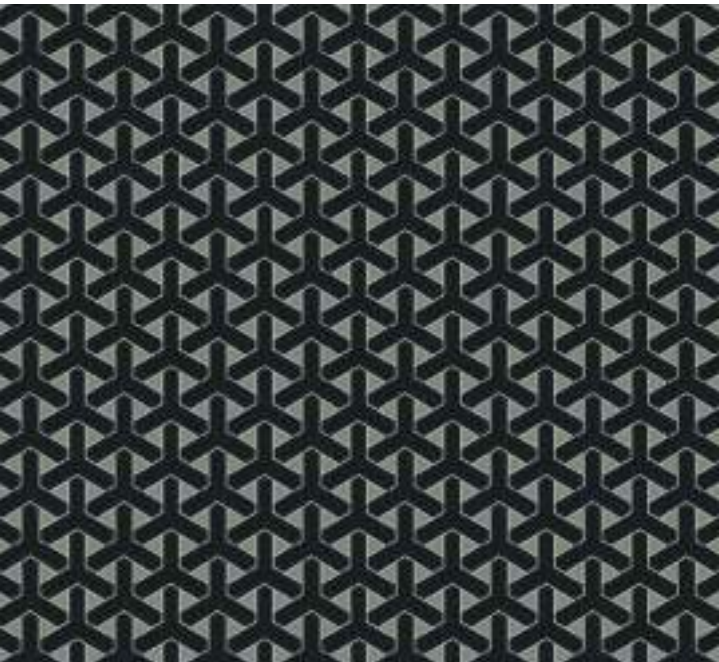
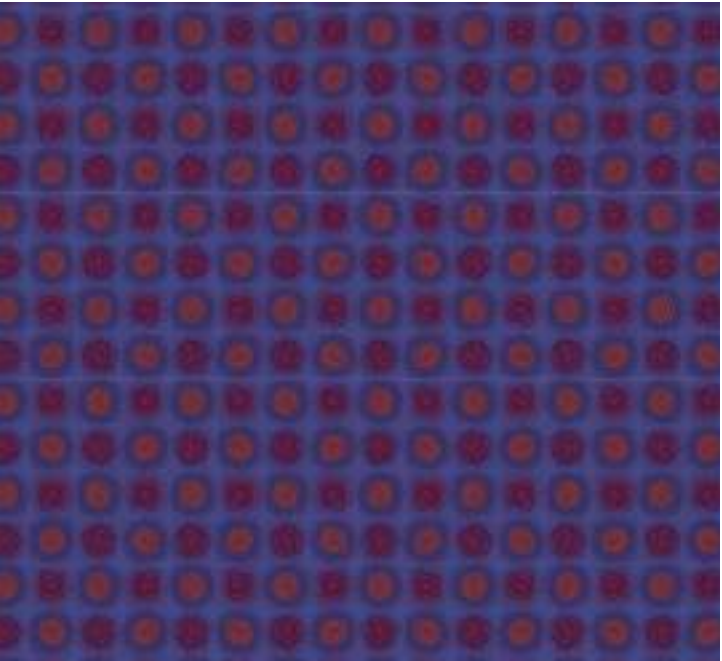
The Westex Axminster are made to order, taking your design and colour selection from an extensive colour library, to transform it into a truly bespoke flooring solution to match your corporate or interior theme colour requirements.

Manufactured from 80/20 Wool/nylon, the cut pile construction is carefully sheared for a perfect level surface and accurate pile height for a luxury look with robust wear.

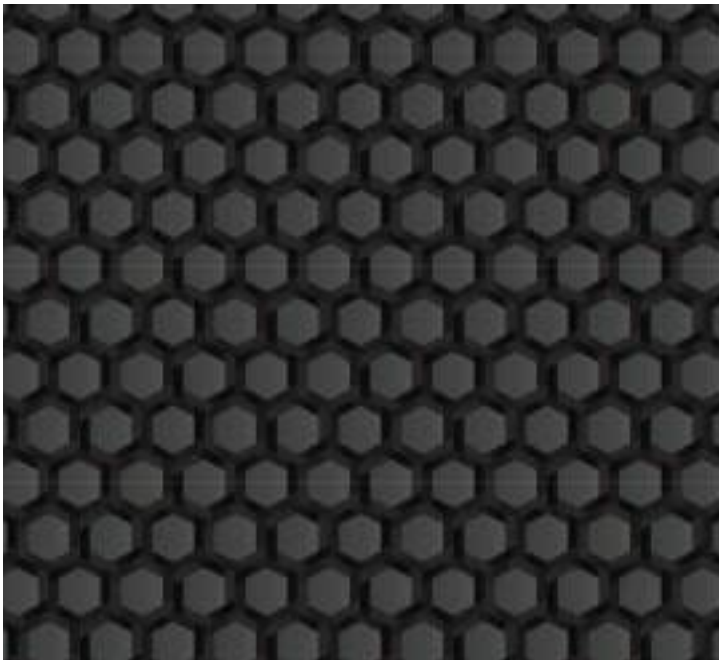
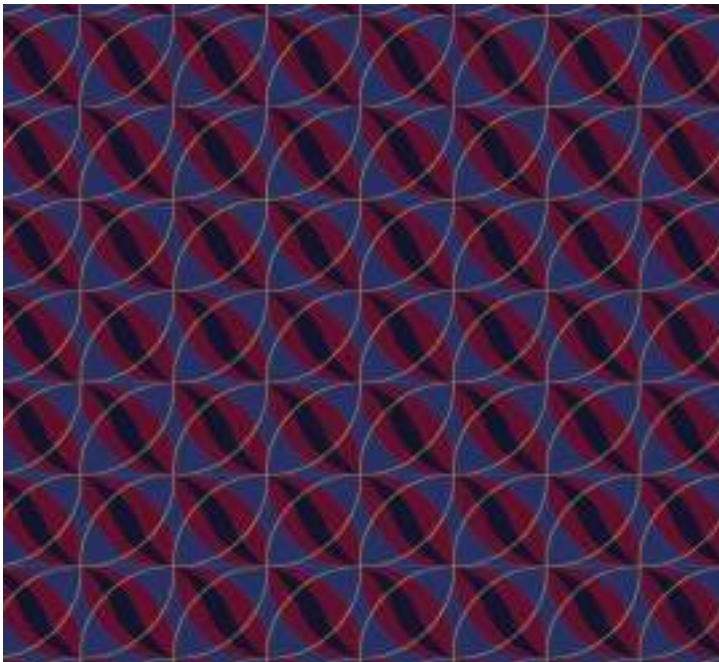
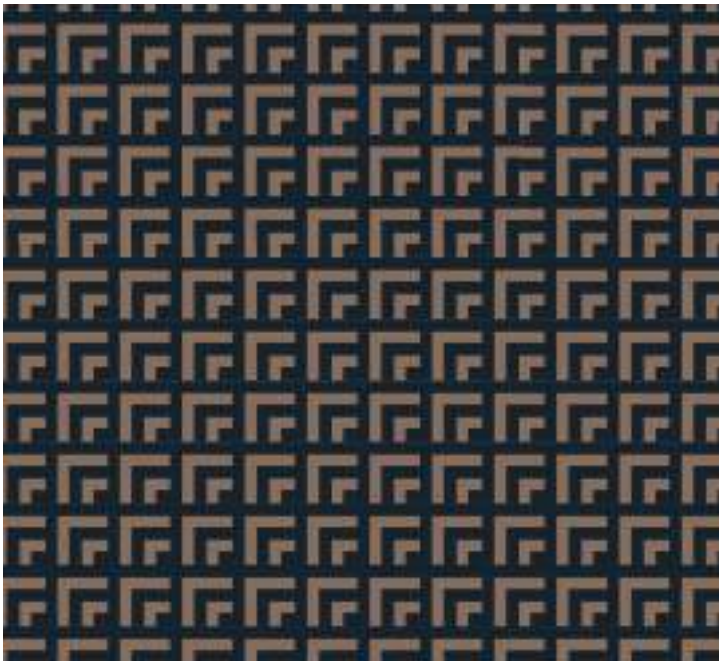
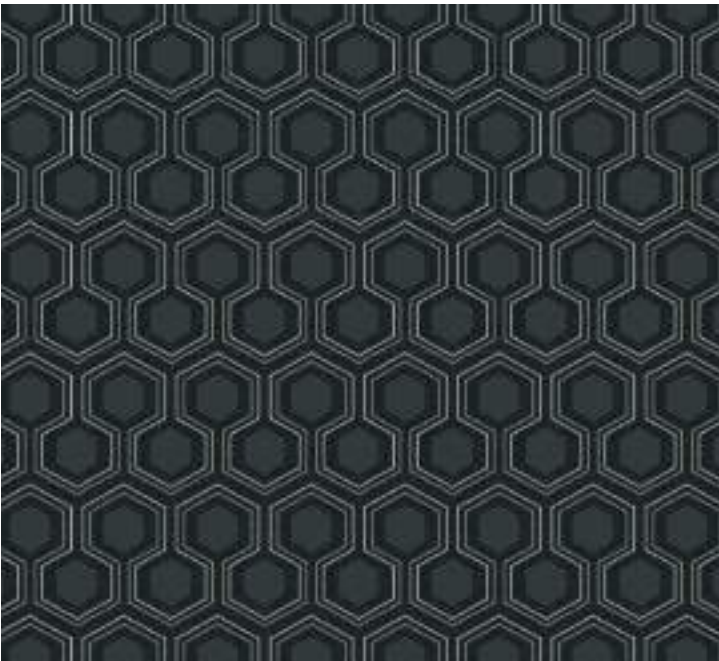
Geometric Inspirations



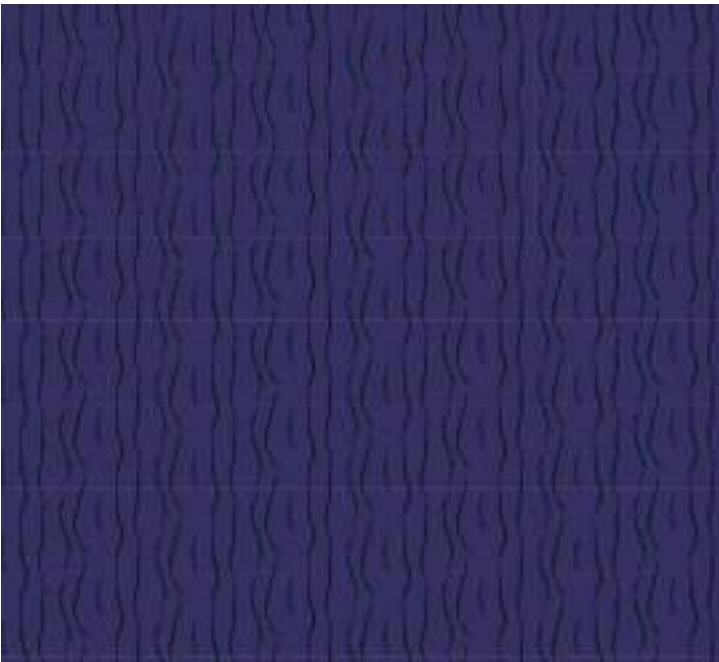
Geometric Inspirations



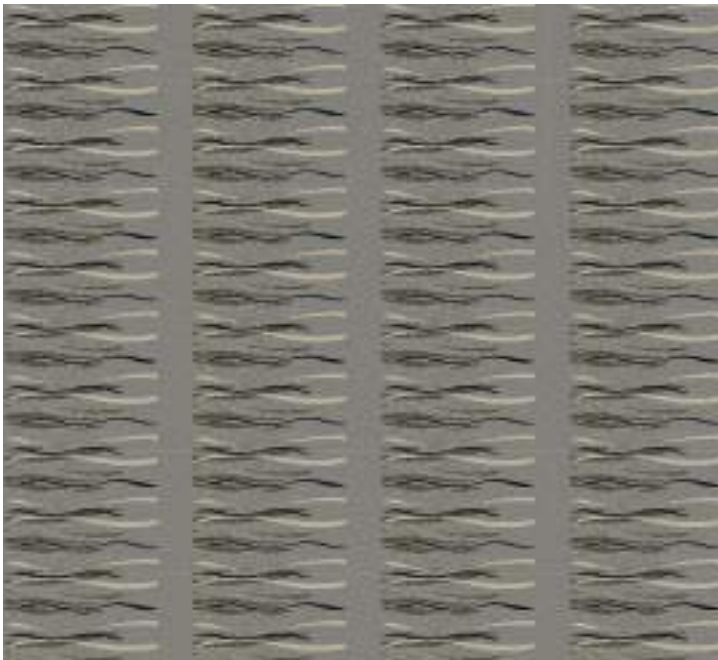
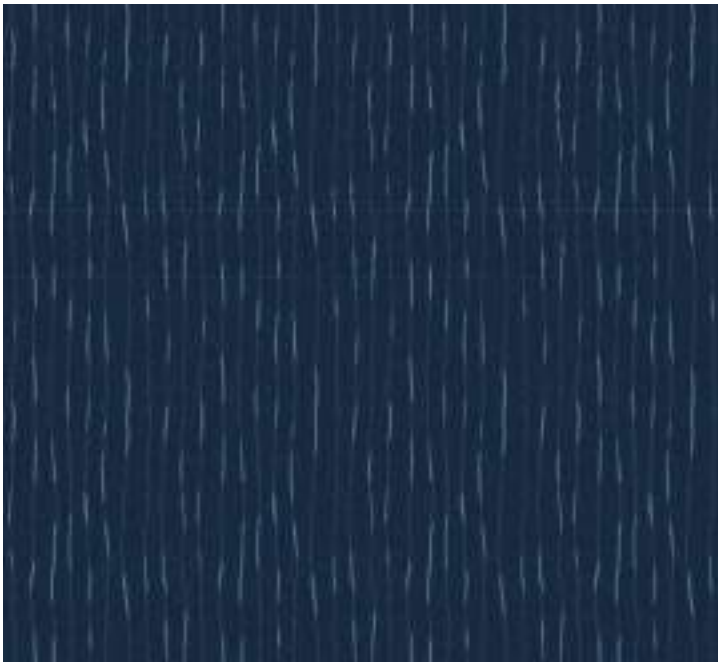
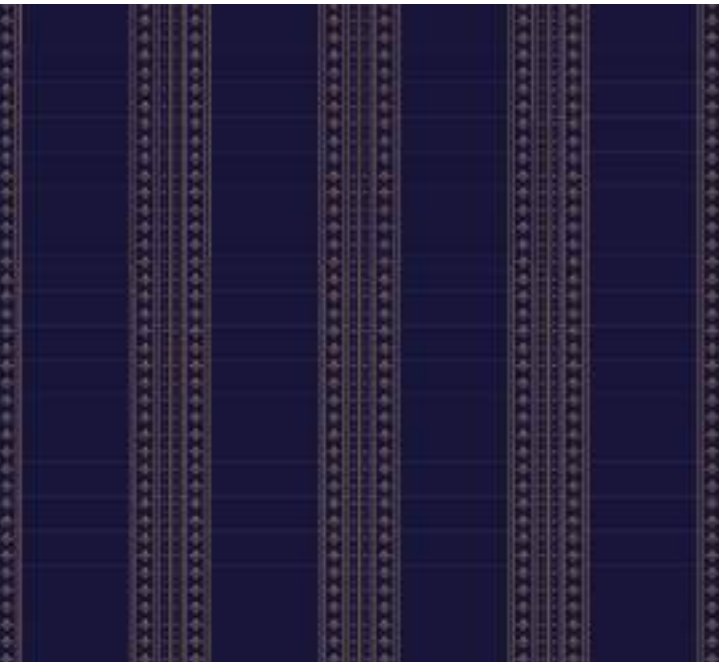
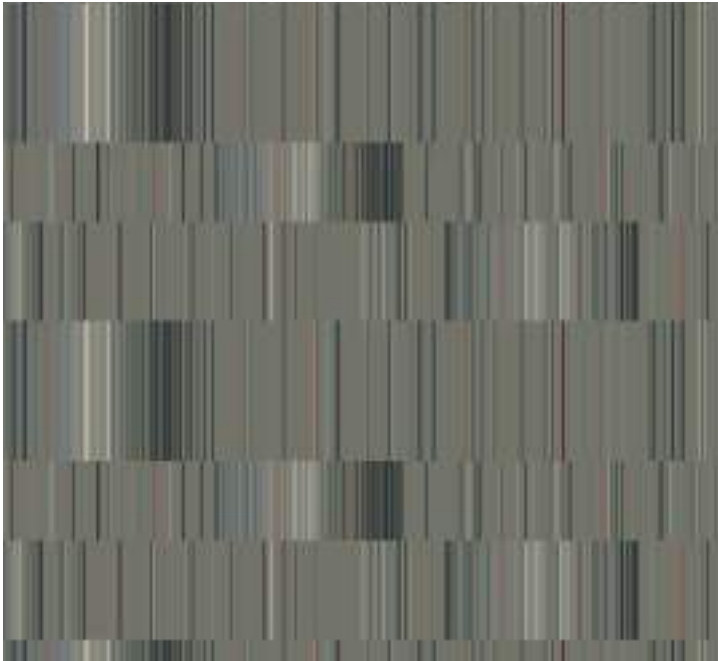
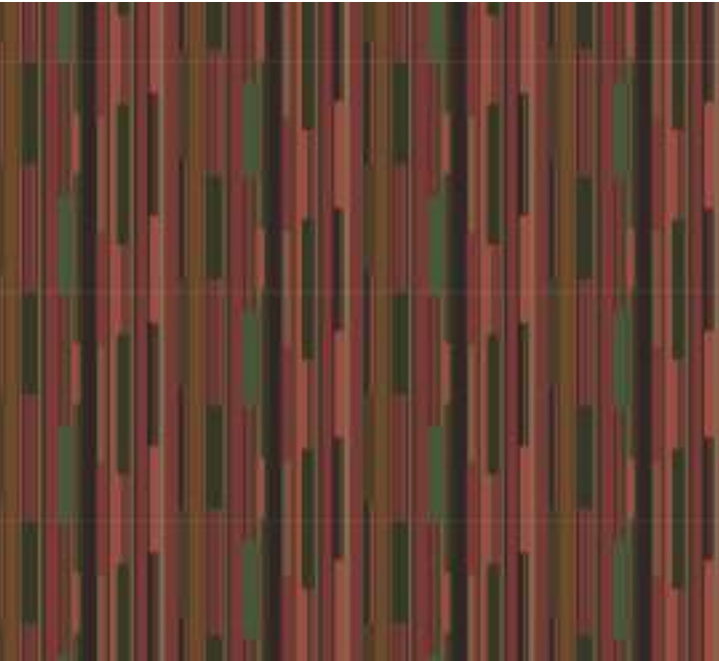
Geometric Inspirations



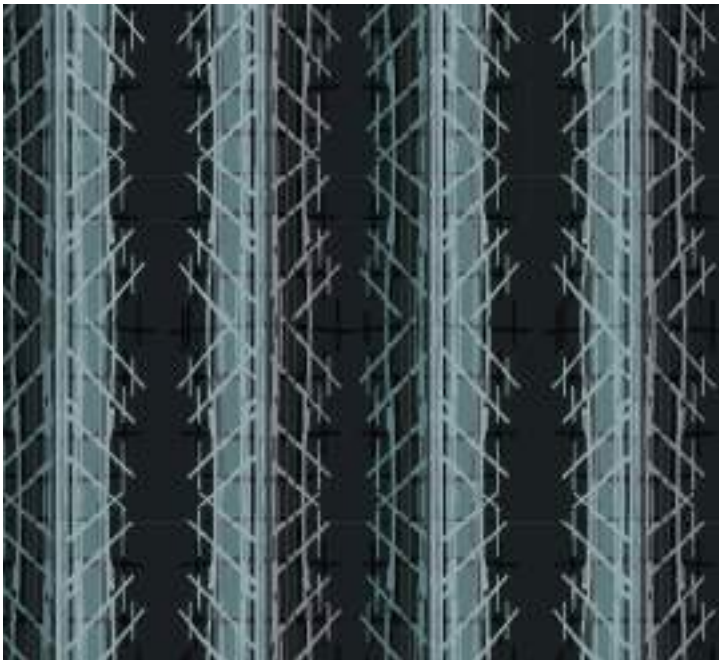
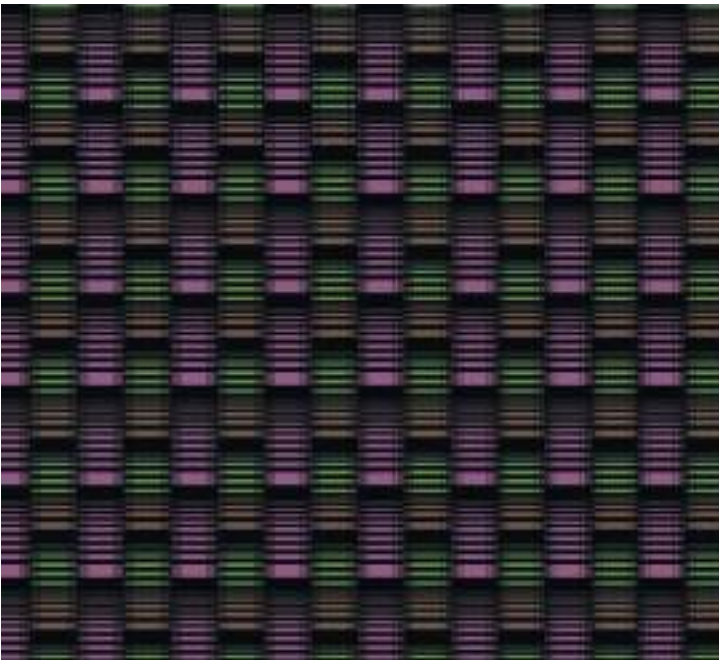
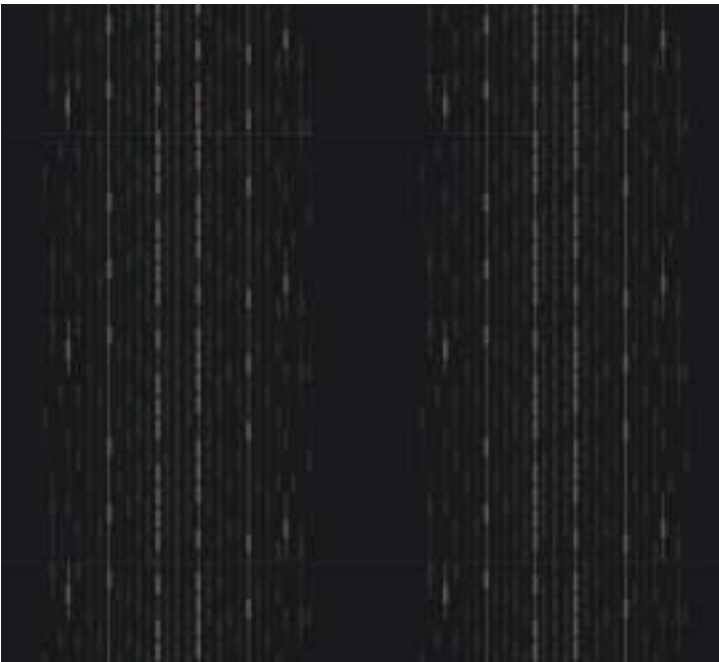
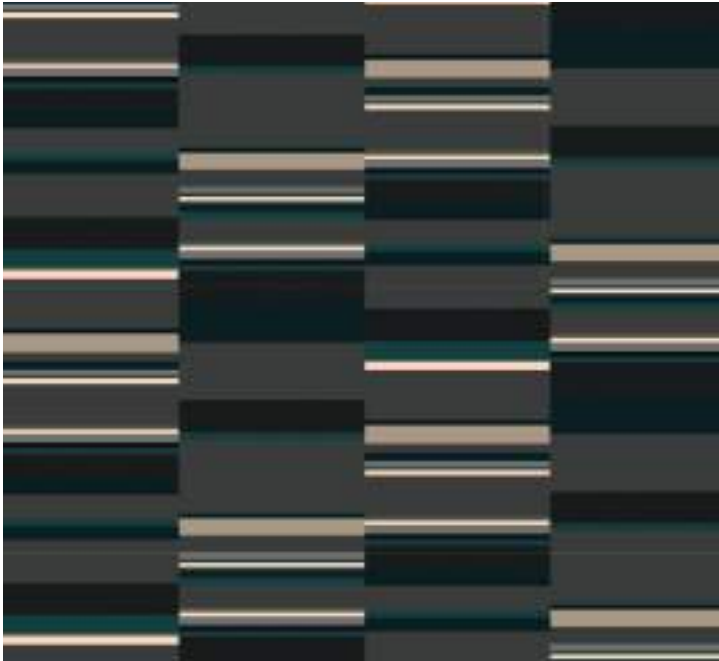
Lines & Stripes



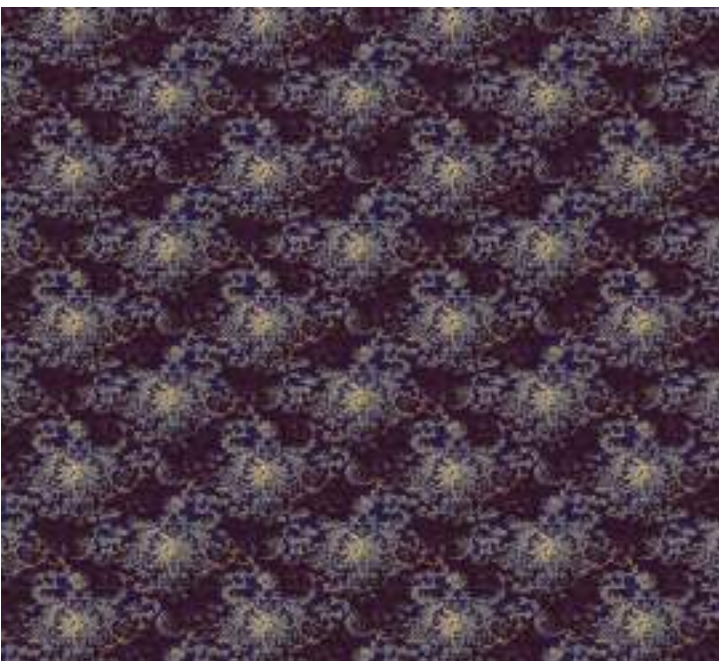
Lines & Stripes



Lines & Stripes



Classic Axminster Designs



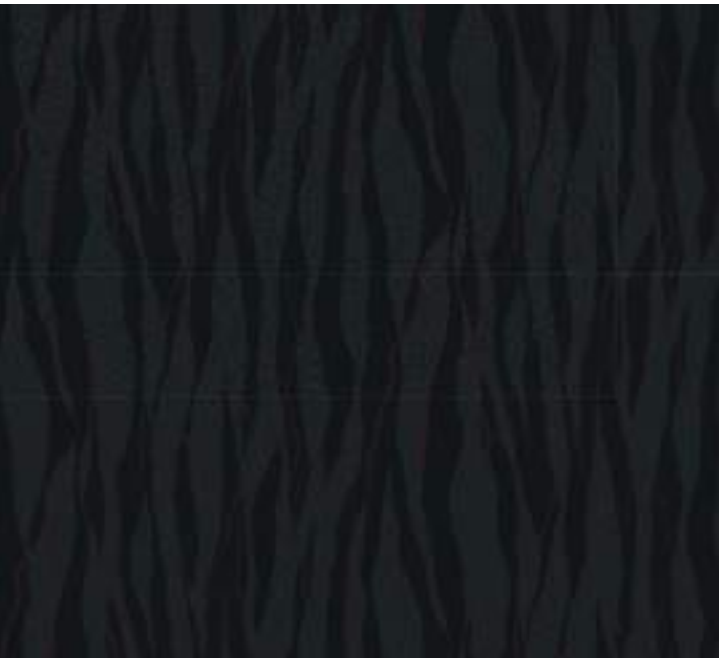
Ombre Effects



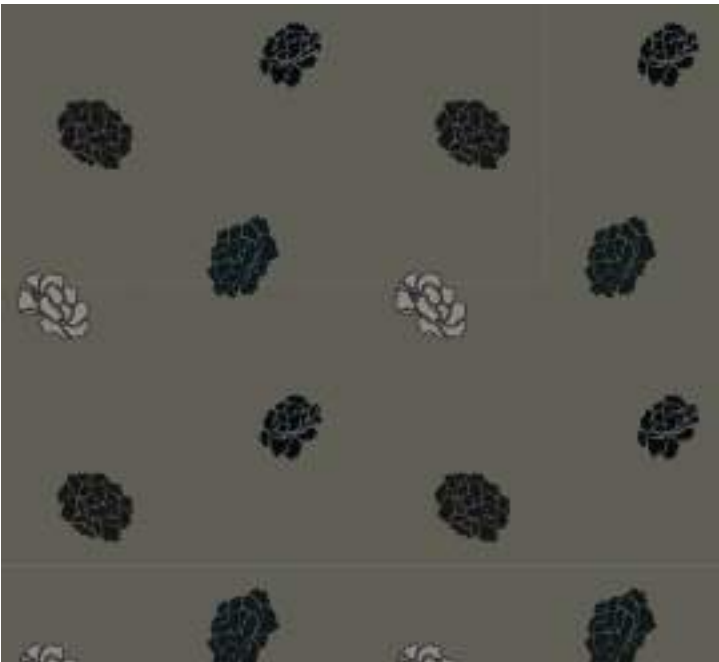
Inspired by Nature



Inspired by Nature



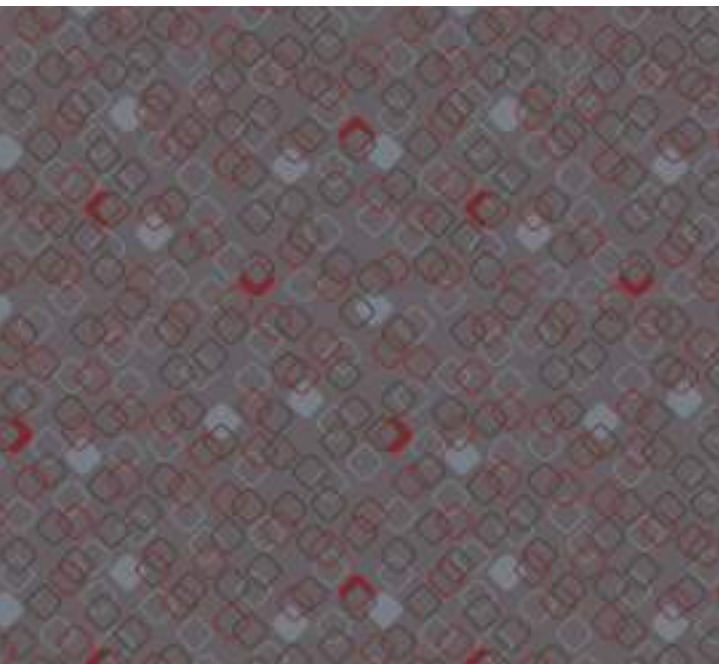
Inspired by Nature



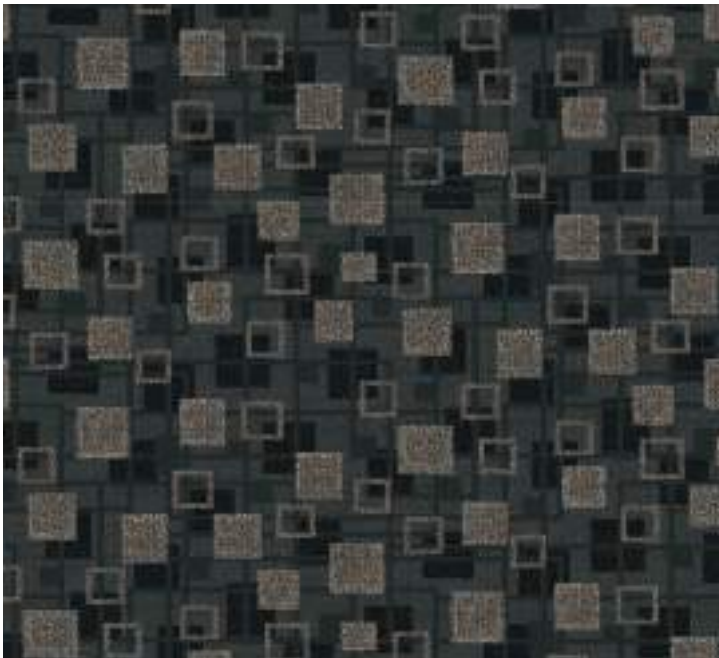
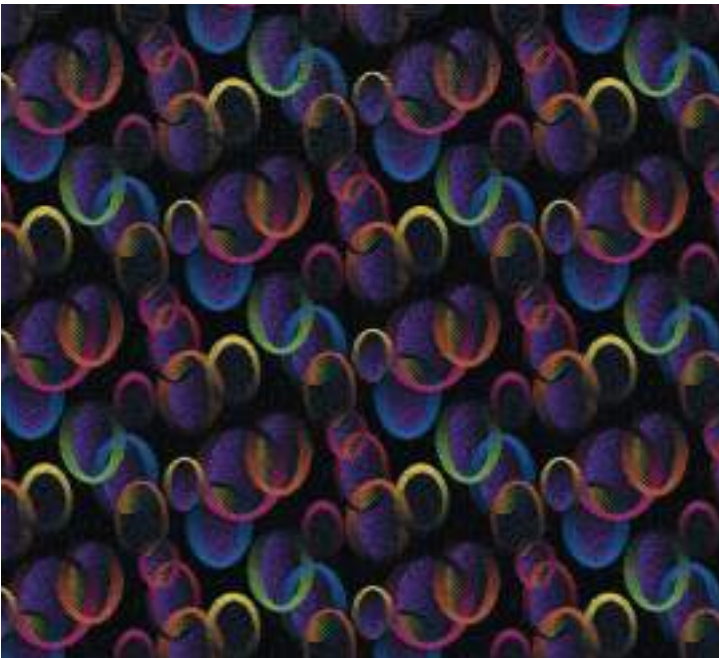
Motifs and Own Branding



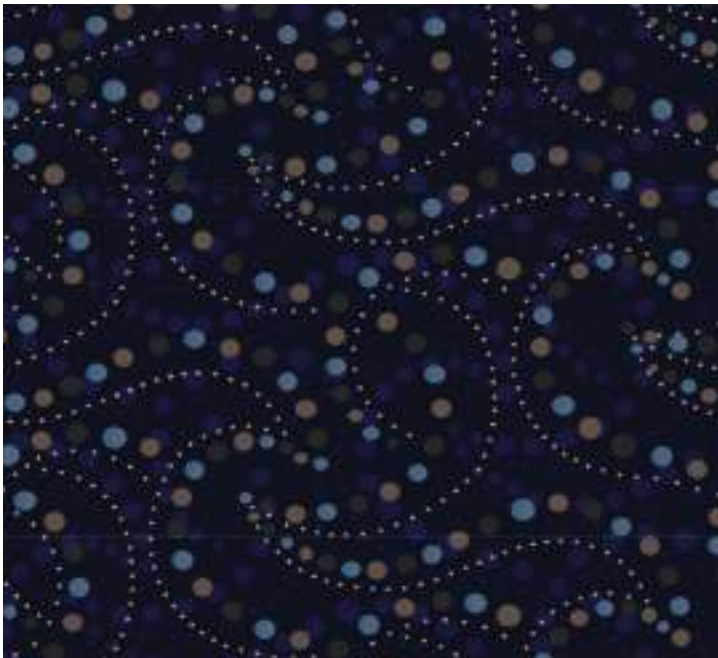
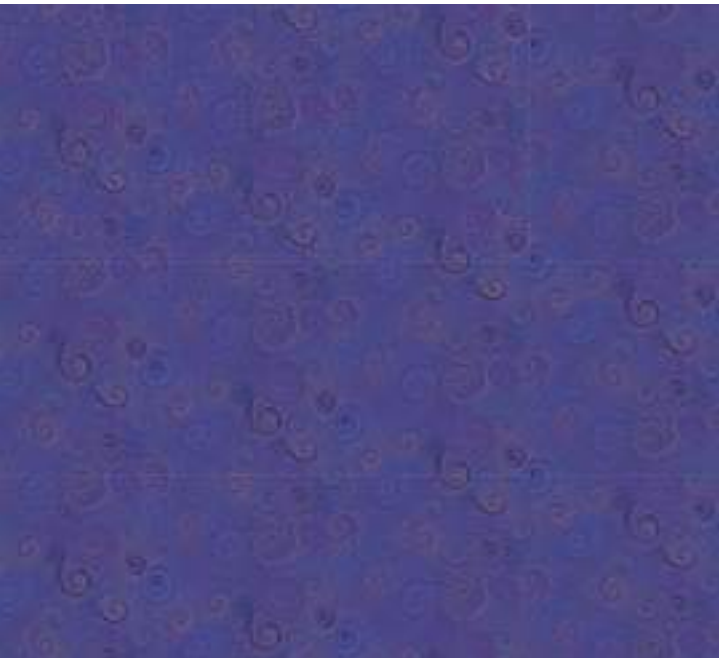
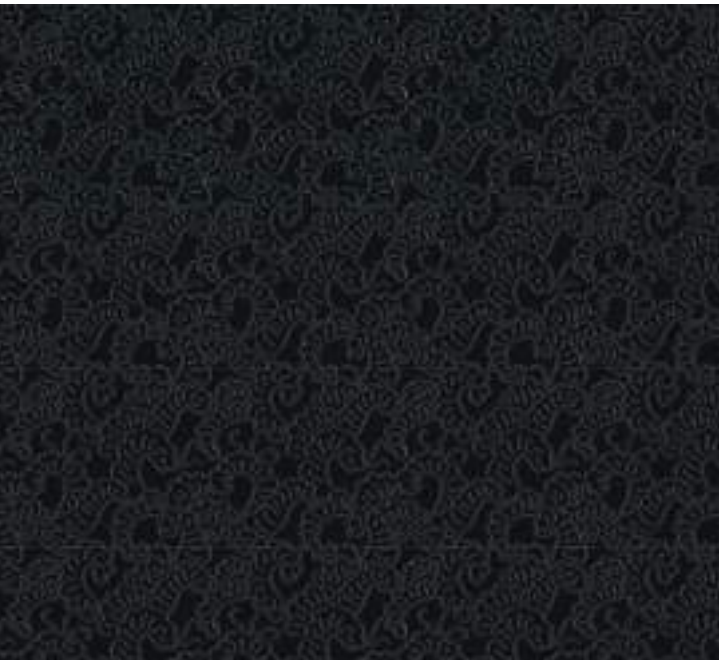
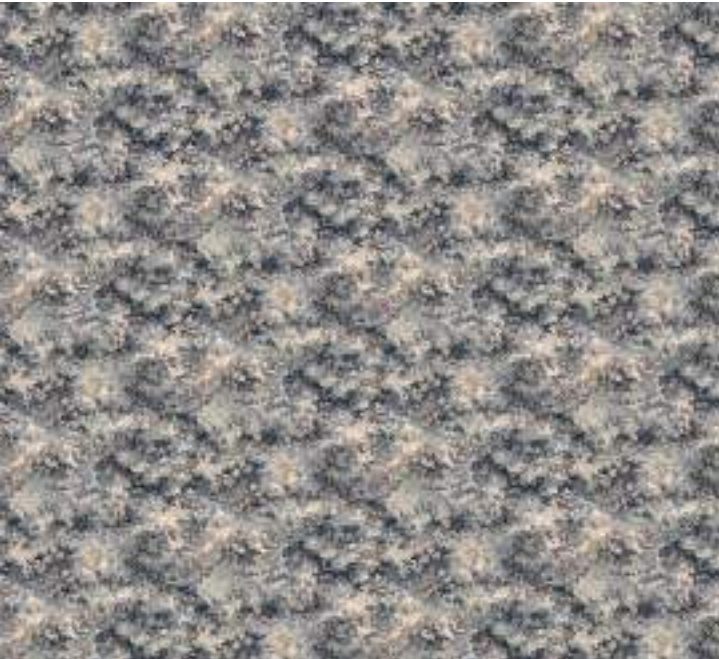
Complex Patterns



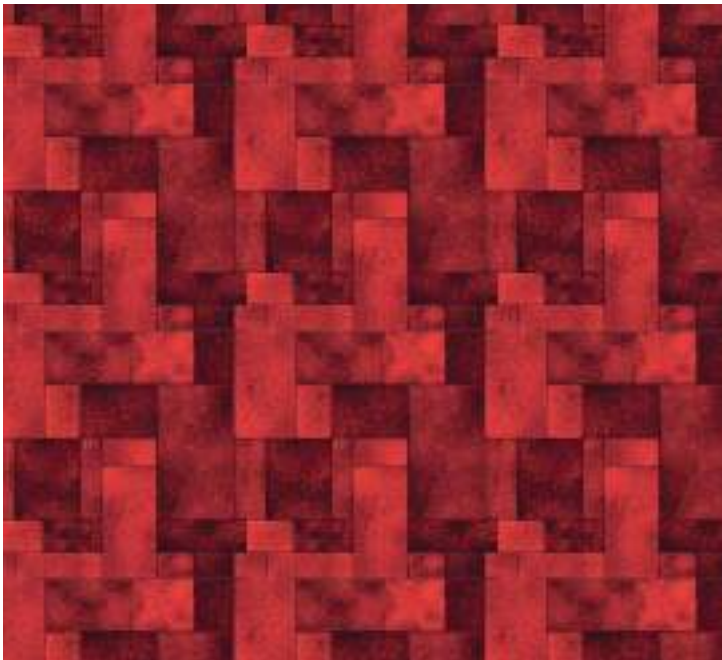
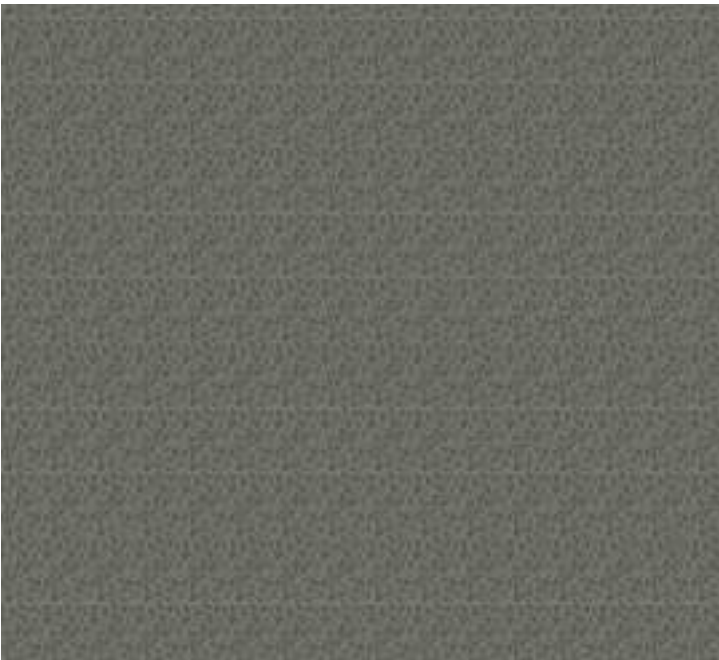
Complex Patterns



Complex Patterns



Complex Patterns



WOVEN & HAND TUFTED RUGS

Uniquely developed for the hospitality market and high end retail stores our bespoke woven and hand tufted rugs are ideal for defining an area or adding a luxuriant softness to hard surface flooring.



With wrap over edging, these rugs are a cost-effective solution, manufactured to your design and colour by machine in 80/20 Wool/Nylon. Wrap over edging these rugs can be carved to achieve a 3D/embossing effect that has a handcrafted look and finish.

Our hand tufted rugs, made by master craftsmen, combine cut pile and loop construction with some of the finest fibres available including Wool, Cotton, Bamboo, Silk, Nylon and Viscose.

Made to customers' own dimensions and colour choice sculpting and carving introduce a sense of dimension that not only looks luxurious but feels luxurious as well.



WOVEN RUGS SPECIFICATION

| | |
|--|--|
| Description | Woven Rug |
| Pile Composition | 80% Wool/20% Nylon |
| Construction | Cut Pile |
| Backing | Weft: Cotton & Polyester |
| | Warp: Cotton & Polyester |
| | Stuffer: Polyester |
| | Latex: SBR Synthetic |
| Carpet width | 3.66m (12'), 4m (13.12') |
| Yarn Count | 660 Tex x 2 ply |
| Pitch & Beat Up | 7 x 7 / 7 x 8 / 7 x 9 / 7 x 10 / 7 x 11 / 7 x 12 |
| Finished Pile Height | 7.1mm (0.281") |
| Total Carpet Thickness | 10.2mm (0.401") |
| Resistance to insect pests A.S 2001.6.1 | Pass |
| Tuft Withdrawal Force A.S 2111.15 | 6 Newtons (min) |
| Colour Fastness to Light A.S 1006.B02 | 5-6 (subject to colour selection) |
| Colour Fastness to Shampoo A.S 2111.19.2 | 3-4 |
| Colour Fastness to Rubbing A.S 2111.19.1 | 3-4 Minimum (subject to colour selection) |
| Flammability ASTM E 648-14 | Class I |
| Reaction to Fire EN13501-1:2007 A1:2009(E) | B _{fl} - s1 |
| IMO Module B & D | Pass |

HANDTUFTED WALL to WALL & RUG SPECIFICATION

| | |
|--|--|
| Description | Hand Tufted Wall to Wall Carpet & Rugs |
| Pile Composition | Wool/Cotton/Bamboo/Silk/Nylon/Viscose |
| Construction | Cut Pile/Loop Pile |
| Primary Backing | 100% Cotton |
| Secondary Backing | 60% Cotton/40% Polyester |
| Carpet width | Customer Specified |
| Pile Height | 7mm – 13mm |
| Total Carpet Thickness | 10mm - 16mm |
| Tuft Withdrawal Force A.S 2111.15 | Cut 10 Newtons (min) |
| Colour Fastness to Light | B.S 1006.B02 |
| Colour Fastness to Shampoo A.S 2111.19.2 | 3-4 Minimum |
| Colour Fastness to Rubbing A.S 2111.19.1 | 3-4 Minimum |
| Reaction to Fire EN13501-1:2007 A1:2009(E) | B _{fl} - s1 |
| IMO Module B & D | Pass |

AXMINSTER SPECIFICATION

| | |
|--|--|
| Description | Genuine Woven Axminster |
| Pile Composition | 80% Wool/20% Nylon ±5% |
| Construction | Cut Pile |
| Backing | Weft: Jute |
| | Warp: Cotton & Polyester |
| | Stuffer: Polyester |
| | Latex: SBR Synthetic |
| Carpet width | 3.66m (12'), 4m (13.12') |
| Yarn Count | 660 Tex x 2 ply |
| Pitch & Beat Up | 7 x 7 / 7 x 8 / 7 x 9 / 7 x 10 / 7 x 11 / 7 x 12 |
| Finished Pile Height | 7.1mm (0.281") |
| Total Carpet Thickness | 10.2mm (0.401") |
| Resistance to insect pests A.S 2001.6.1 | Pass |
| Tuft Withdrawal Force A.S 2111.15 | 6 Newtons (min) |
| Colour Fastness to Light A.S 1006.B02 | 5-6 (subject to colour selection) |
| Colour Fastness to Shampoo A.S 2111.19.2 | 3-4 |
| Colour Fastness to Rubbing A.S 2111.19.1 | 3-4 Minimum (subject to colour selection) |
| Flammability ASTM E 648-14 | Class I |
| Reaction to Fire EN13501-1:2007 A1:2009(E) | B _{fl} - s1 |
| IMO Module B & D | Pass |

| Pitch/Rows | Pile Height (mm) | Pile Weight = oz per yd |
|------------|------------------|-------------------------|
| 7.7 | 7.1 | 30.50 |
| 7.8 | 7.1 | 34.90 |
| 7.9 | 7.1 | 39.20 |
| 7.10 | 7.1 | 43.60 |
| 7.11 | 7.1 | 47.90 |
| 7.12 | 7.1 | 52.30 |



riba
product
selector



NBS Plus



Westex Carpet Limited

Castle Mills, Moorend, Cleckheaton, West Yorkshire BD19 3PS

T: +44 (0)1274 861 334 F: +44(0)1274 873 266 E: info@westexcarpets.co.uk

www.westexcarpets.co.uk