

DESIGN FLOORS

Laydex



ivc group

Metropolitan

Metropolitan

THANKS TO THE UNIQUE
'EMBOSS IN REGISTER' PROCESS,
THIS METROPOLITAN COLLECTION
RECREATES THE PERFECTION AND
REALISM OF NATURE.
YOU ARE ABLE TO SEE AND FEEL
THE DEPTH OF THE GROOVES THAT
PERFECTLY FOLLOW THE LINES AND
KNOTS OF THE WOOD.

	SIZE	THICKNESS	WEARLAYER	4 SIDED BEVELLED EDGES
DRYBACK	19,6 x 132,0 cm	2,5 mm	0,55 mm	
CLICK	19,1 x 131,6 cm	4,5 mm	0,55 mm	



SOMERSET OAK **52119**



SOMERSET OAK **52232**



SOMERSET OAK **52836**



SOMERSET OAK **52839**



SOMERSET OAK **52232**



SOMERSET OAK **52945**

	SIZE	THICKNESS	WEARLAYER	4 SIDED BEVELLED EDGES
DRYBACK	19,6 x 132,0 cm	2,5 mm	0,55 mm	
CLICK	19,1 x 131,6 cm	4,5 mm	0,55 mm	



SOMERSET OAK **52842**



SOMERSET OAK **52872**



SOMERSET OAK **52867**



SOMERSET OAK **52945**



SOMERSET OAK **52921**



SOMERSET OAK **52932**

	SIZE	THICKNESS	WEARLAYER	4 SIDED BEVELLED EDGES
DRYBACK	19,6 x 132,0 cm	2,5 mm	0,55 mm	
CLICK	19,1 x 131,6 cm	4,5 mm	0,55 mm	



MAJOR OAK **53117**



MAJOR OAK **53830**



MAJOR OAK **53850**



MAJOR OAK **53870**

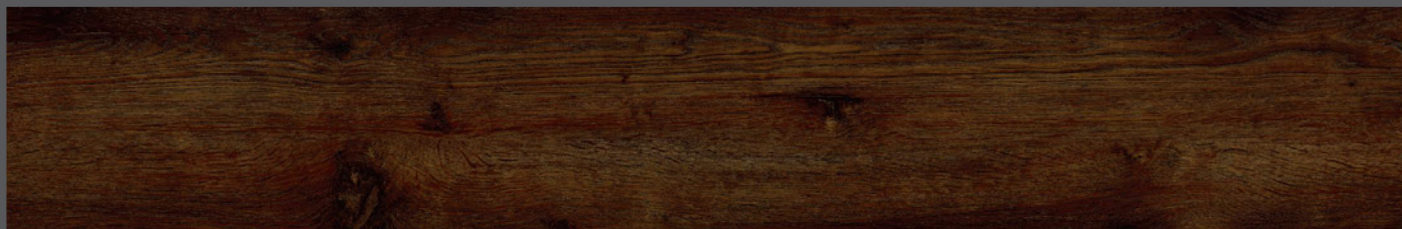






MAJOR OAK **53926**

	SIZE	THICKNESS	WEARLAYER	4 SIDED BEVELLED EDGES
DRYBACK	19,6 x 132,0 cm	2,5 mm	0,55 mm	
CLICK	19,1 x 131,6 cm	4,5 mm	0,55 mm	



MAJOR OAK **53890**



MAJOR OAK **53926**



MAJOR OAK **53930**



MAJOR OAK **53967**



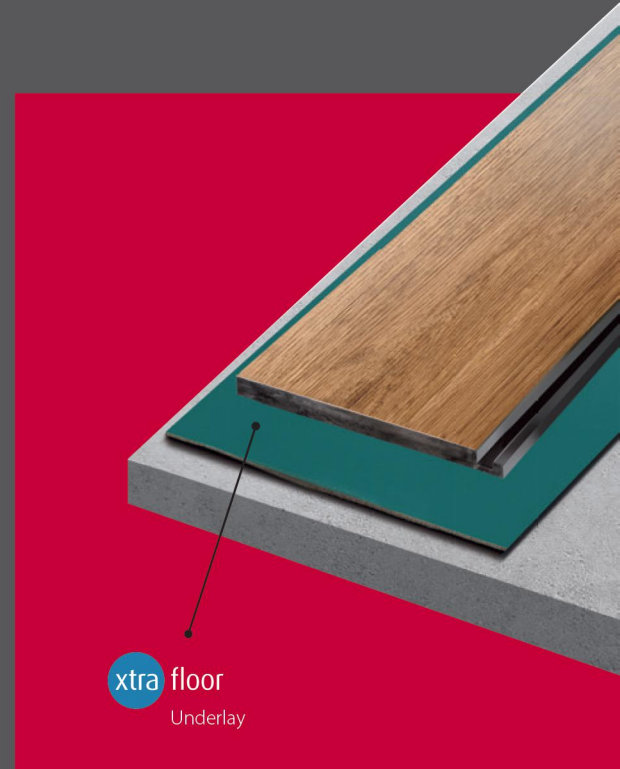
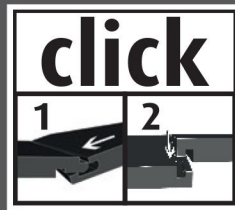
INSTALLATION

Our Design Floors can be installed by full adhesion or by means of a clicking system.

Metropolitan Click

Click flooring is specially designed for even quicker and easier installation. Each piece simply locks directly into place, giving the same stunning aesthetic qualities as a traditional installation, but **faster and without the need for adhesive**.

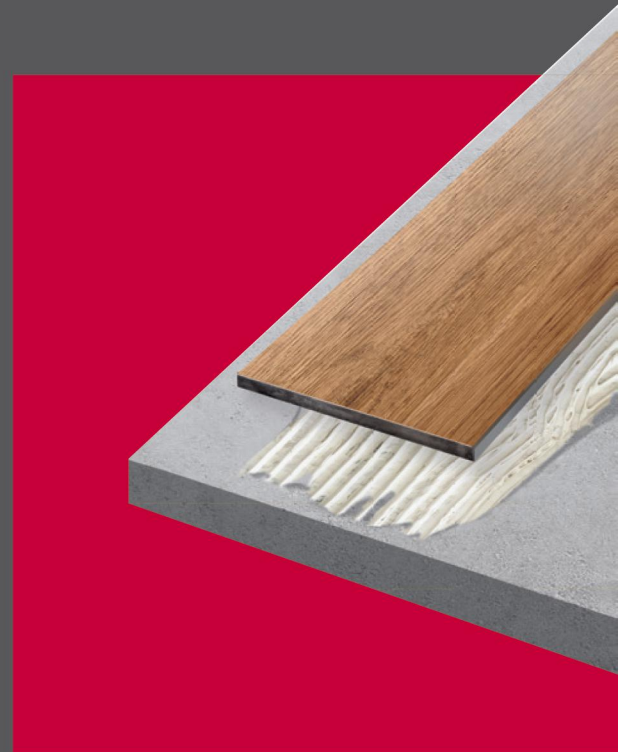
Click flooring ensures a solid installation through **an enhanced vertical locking system**, outperforming other products on the market.



Metropolitan Dryback

Dryback flooring has to be **glued** completely onto a solid and smooth **subfloor**.

A suitable PVC adhesive therefore has to be used.



For detailed installation instructions, please check www.installandclean.com



Moisture resistant

An easy clean moisture resistant wear layer makes design flooring suitable for any room, even bathrooms and kitchens.



Soundproof

Design flooring absorbs sound, giving better acoustics in the home or working environment.



Hygienic

No expensive cleaning agents are required to keep your floor at its best; just a simple broom, mop and vacuum cleaner. A design floor will not harbor dust mites and other allergens.



IAQ – Indoor Air Quality

As far as air quality is concerned, all design floors adhere to the German AgBB standard, the strictest air quality standard in the world.



Superguard®

The upper Superguard® layer is scuff and stain resistant and is easy to clean, offering maximum protection with minimum maintenance.



No marks and spots

Thanks to their strong wear layer, combined with the PU layer, our design floors are specifically resistant to spots and shoe marks, which can be removed within a moment.



Minimal residual indentation

Our design floors adhere to all strict standards concerning residual indentations caused by chairs, cupboards, heels, etc.

TECHNICAL SPECIFICATIONS

Metropolitan Dryback



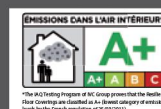
PRODUCT INFORMATION		
Level of use	EN ISO 10874	23 - 33 - 42
Total thickness	EN ISO 24346	2,5 mm (100 mils)
Wear layer	EN ISO 24340	0,55 mm (22 mils)
Wear layer PUR treatment		Superguard®
Total weight g/m²	EN ISO 23997	4.059
Embossed in register		
SIZE & PACKING		
Planks	EN ISO 23342	19,6 x 132,0 cm (7,72" x 51,97")
Box planks	14 pcs/box	3,62 m²/box (38,99 ft²/box)
TEST RESULTS		
Inflammability	EN 13501	Bfl-S1
Scratch resistance	EN 660-2	Class T
Squareness & straightness	EN ISO 24342	≤ 0,35 mm
Slip resistance	EN 13893	DS
Slip restraint	DIN 51130	R10
Residual indentation	EN ISO 24343	≤ 0,10 mm
Furniture leg resistance	EN ISO 16581	No cracks, no damage
Curling	EN ISO 23999	≤ 2 mm
Electrical resistance	EN 1081	≤ 10⁹ Ohm
Dimensional stability	EN ISO 23999	Norm: ≤ 0,25 % Average result measured: ≤ 0,05 %
Heat insulation	EN 12524	0,25 w/(m.K)
Thermal resistance R	EN ISO 12664	0,01 m².K/W
Electrostatic performance	EN 1815	< 2 kV
Formaldehyde group	EN 717-1	E1
Acoustic insulation	EN 140-8	4 dB
Castor chair resistance	EN 425	No damage to wearlayer, no delamination
Stain resistance	EN ISO 26987	Very good
Light fastness	ISO 105-B02	≥6
Underfloor heating	EN 12524	Suitable, max 27°C
Warranty (year)		20 Residential 10 Commercial

Metropolitan Click

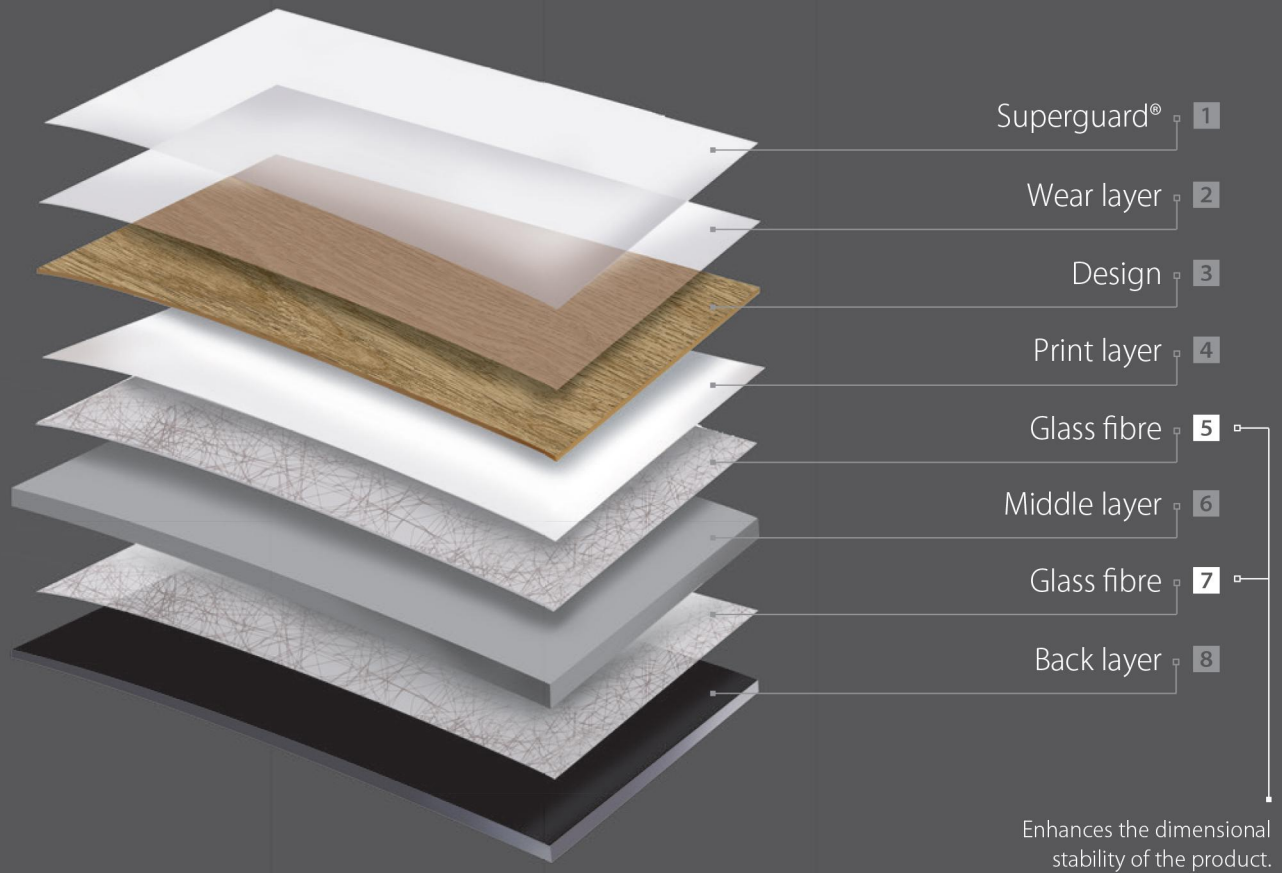
PRODUCT INFORMATION		
Level of use	EN ISO 10874	23 - 33 - 42
Total thickness	EN ISO 24346	4,5 mm (180 mils)
Wear layer	EN ISO 24340	0,55 mm (22 mils)
Wear layer PUR treatment		Superguard®
Total weight g/m²	EN ISO 23997	7.681
SIZE & PACKING		
Planks	EN ISO 23342	19,1 x 131,6 cm (7,52" x 51,81")
Box planks	7 pcs/box	1,76 m²/box (18,94 ft²/box)

The warranty covers manufacturing defects and premature wear in the event of normal use.

The samples in this presentation are only cuttings of the respective products and show only a small part of the overall design and colour. With regard to colour printing of the photographic images, it is only possible to give a provisional representation of the colour.



COMPOSITION



DESIGN | FLOORS



a division of  ivc group

Nijverheidslaan 29 | 8580 Avelgem | Belgium
T +32 [0]56 653 211 | info@ivcgroup.com
www.ivcgroup.com
BTW BE 0866.682.231



Laydex Flooring Solutions

Unit 3, Allied Industrial Estate Kylemore Road, Dublin 10
Tel: +353 1 6426600 Email: sales@laydex.ie Web: www.laydex.ie