

**RUBBER FLOORING PRODUCTS  
& ELASTIC LAYERS**  
for indoor sports facilities





## SPORTEC® Floor coverings

COMFORT AND COLOUR FOR YOUR INDOOR SPORTS FACILITIES

**SPORTEC® floor coverings** made from top-quality recycled rubber tyre and EPDM colour granules are extremely sturdy, easy to clean and water-repellent. As they are very comfortable to walk on and absorb footfall and room noise, Sportec® floor coverings are the ideal solution for a wide range of applications in commercial and residential buildings.

Available in a variety of attractive colours, **SPORTEC®** allows for personalized floor design. **SPORTEC®** rubber floor coverings bring comfort and colour to your business premises, offices, exhibition halls and privately used facilities!

Many **SPORTEC®** floor coverings are available with Cfl-s1 fire certification (tested according EN 13501-1). **SPORTEC** products also benefit from a VOC omissions rating of A+ in accordance with AFSSET regulations and comply with VOC requirements of DIBt and AgBB.

### EPDM colour range

white



eggshell



beige



yellow



bright yellow



dark green



green



bright green



dark blue



blue



bright blue



pink



lilac



bright orange



red



bright red



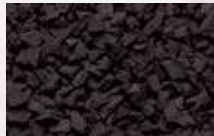
brown



beige brown



dark grey



medium grey



grey



black







## SPORTEC® color

### RUGGED, EASY-TO-CLEAN ALLROUND FLOORING

**SPORTEC® color** is a rugged, easy-to-clean and water-repellent floor covering material for use in fitness and gym facilities, retail outlets, exhibition halls, equipment storage rooms and ice sports stadiums.

Thanks to its excellent durability and high resistance to mechanical wear, **SPORTEC® color** is the all-rounder solution for rubber flooring. Choose from our range of colours and hues to create a room that matches your colour scheme, offers great walking comfort and absorbs impact and room noise.

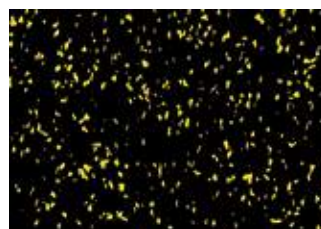
#### Technical Data

<b>Material</b>	fine-grain recycled rubber tyre granules (black) with 5, 10, 15, 20, 30 or 50 % EPDM colour granules, PU-elastomer bonded
<b>Colours</b>	<b>color 0, 5, 10, 15, 20, 30:</b> black with blue, red, green, grey, blue/grey or bright yellow* <b>color 50:</b> black with blue, red, grey or beige* [*other colours available on request]
<b>Roll width</b>	1.500 mm (± 1,5%)
<b>Thickness</b>	<b>color 0, 5, 10, 20, 30, 50:</b> 6* mm (± 0.3 mm) <b>color 15:</b> 4, 5, 6, 8, 10, 12 mm (± 0.3 mm) [*other thicknesses available on request]
<b>Roll length</b>	length [m] (± 1.5 %) / thickness [mm]: 30/4, 24/5, 20/6, 15/8, 12/10, 10/12

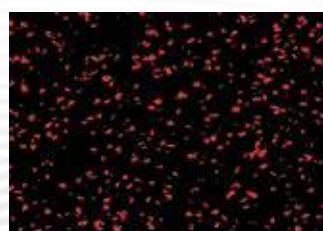
black-blue-grey



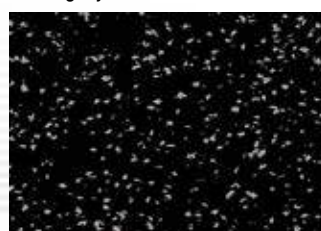
black-bright yellow



black-red



black-grey



#### SPORTEC® color hues (percentage figure indicates colour share)

color 0



color 5



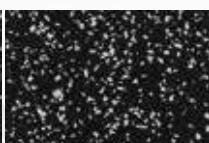
color 10



color 15



color 20



color 30



color 50







## SPORTEC® splash

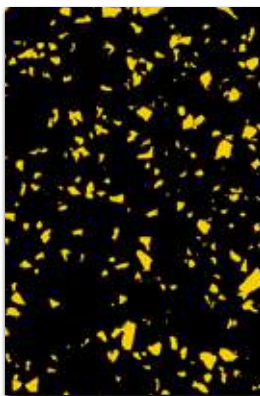
TOP QUALITY PRODUCT OFFERING A WEALTH OF DESIGN OPTIONS

**SPORTEC® splash** and **SPORTEC® giga** offer the same outstanding properties and application options as **SPORTEC® color**. Thanks to the incorporation of large and small EPDM colour granules, **SPORTEC® splash** floor covering are available in an even greater range of colours and finishes. **SPORTEC® giga** contains specially developed, extra-large colour granules for mesmerising colour effects. **SPORTEC® splash** and **SPORTEC® giga** make your rooms not only very attractive, but also safe and comfortable.

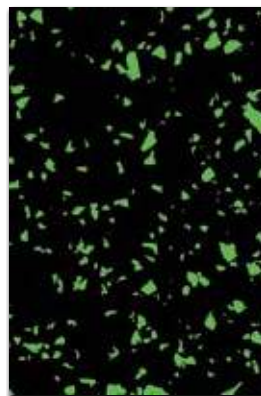
### Technical Data

<b>Material</b>	fine-grain recycled rubber tyre granules (black) with EPDM colour granules, PU-elastomer bonded
<b>Colours</b>	black with bright blue, bright red, bright green, bright yellow or bright orange (other colours available on request)
<b>Rolls width</b>	1.500 mm (± 1,5%)
<b>Thickness</b>	4, 5, 6, 8, 10, 12 mm (± 0.3 mm) (other thicknesses available on request)
<b>Roll length</b>	length [m] (± 1.5 %) / thickness [mm]: 30/4, 24/5, 20/6, 15/8, 12/10, 10/12

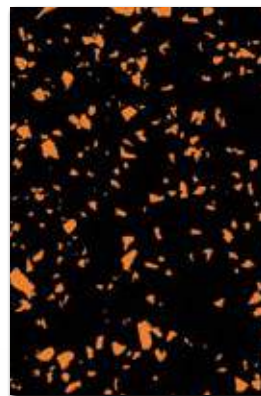
black-bright yellow



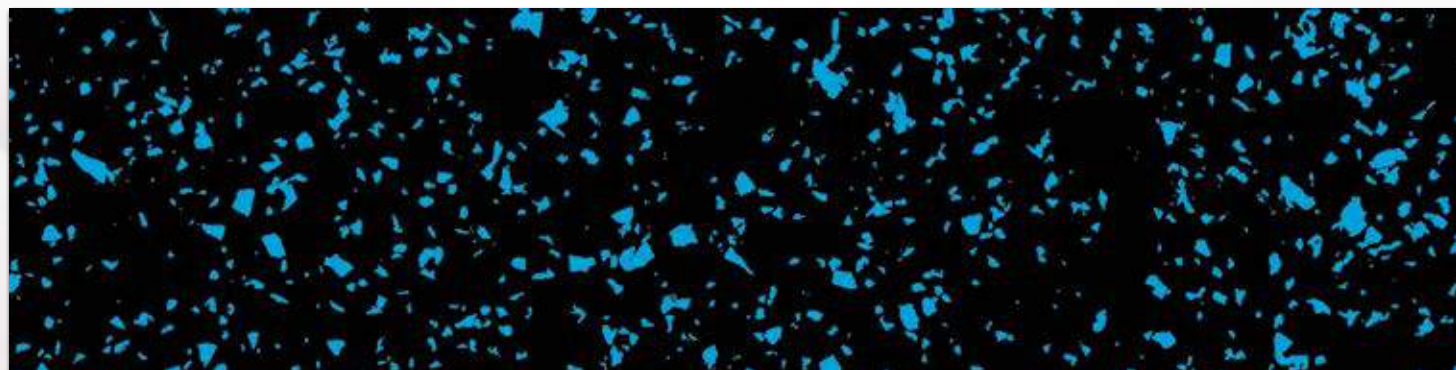
black-bright green



black-bright orange



black-bright blue







## SPORTEC® giga

SAFE – COMFORTABLE – EXTRA ATTRACTIVE

**SPORTEC® giga** offers the same outstanding properties and application options as **SPORTEC® color**. It is a rugged, easy-to-clean and water-repellent floor covering material for use in fitness and gym facilities, retail outlets, exhibition halls, equipment storage rooms and ice sports stadiums. **SPORTEC® giga** contains specially developed, extra-large colour granules for mesmerising colour effects. **SPORTEC® giga** provides an aesthetically pleasing and economical solution for all ranges of sports applications.

### Technical Data

<b>Material</b>	fine-grain recycled rubber tyre granules (black) with EPDM colour granules, PU-elastomer bonded
<b>Colours</b>	black with bright blue, bright green or bright yellow
<b>Roll width</b>	1.500 mm (± 1,5%)
<b>Thickness</b>	6, 8, 10 mm (± 0,3 mm) (other thicknesses available on request)
<b>Roll length</b>	length [m] (± 1.5 %) / thickness [mm]: 20/6, 15/8, 12/10

black-bright yellow



black-bright green



black-bright blue







## SPORTEC® purcolor

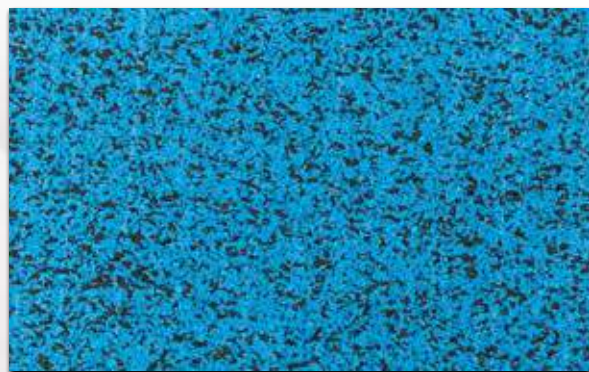
### FLOOR COVERINGS WITH EXTRA COLOUR

**SPORTEC® purcolor** is the ideal flooring material for offices, retail outlets and other frequently used rooms. Thanks to its strong colours, it can be perfectly matched to the interior design, while offering effective impact and room noise reduction and improved walking comfort.

Other reasons that speak for **SPORTEC® purcolor** are the easy installation and cleaning of the floor covering.

#### Technical Data

<b>Material</b>	15 % black EPDM granules and 85 % EPDM colour granules, PU-elastomer bonded
<b>Colours</b>	grey-black, dark grey-black, blue-black or red-black (other colours available on request)
<b>Roll width</b>	1.250 mm ( $\pm 1,5\%$ )
<b>Thickness</b>	4, 6, 8 mm ( $\pm 0,3$ mm) (other thicknesses available on request)
<b>Roll length</b>	length [m] ( $\pm 1,5$ %) / thickness [mm]: 30/4, 20/6, 15/8





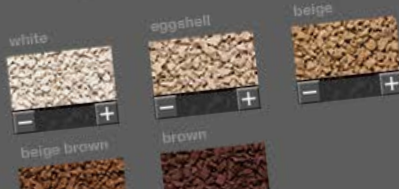
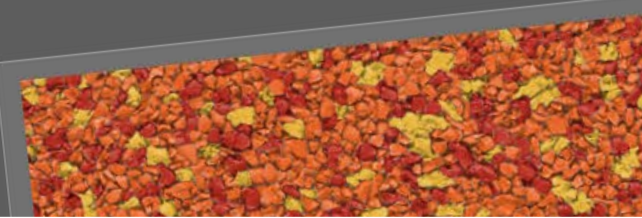
**NEW!****SPORTEC® COLOR MIXER**

Mix your favorite colours by yourself!

[www.kraiburg-relastec.com/sportec/en/SPORTEC\\_color\\_mixer\\_EN](http://www.kraiburg-relastec.com/sportec/en/SPORTEC_color_mixer_EN)**KRAIBURG**  
RELASTE**SPORTEC® COLOR MIXER**

In this section you can compose your personal color mix. Select the colors you would like to use, have a look at the preview, and decide whether you like the mix or not.

Select your colors:

Your sample: 10% bright yellow  
25% bright red  
65% bright orange**SPORTEC® variant****CHOOSE YOUR OWN FLOOR COLOUR**

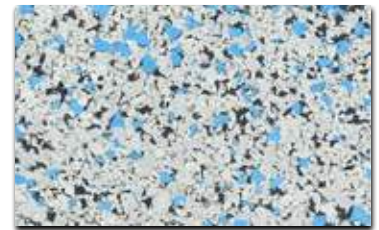
**SPORTEC® variant** floor coverings are available in virtually unlimited colour combinations from the EPDM colour range. You can choose from one of our NEW standard colour mixes (1) or create your own unique flooring using our **SPORTEC COLOR MIXER** available on our internet site (2)

**Technical Data**

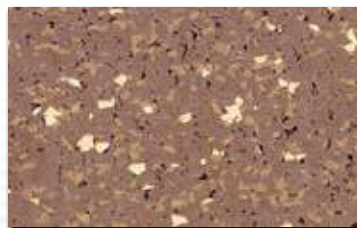
<b>Material</b>	free choice of colour combination from the EPDM colour range, with or without black recycled rubber tyre granule share, PU-elastomer bonded
<b>Colours</b>	as chosen by customer <sup>(1)</sup> (2)
<b>Roll width</b>	1.250 mm (± 1,5%)
<b>Thickness</b>	4 or 6 mm (± 0,3 mm) (other thicknesses available on request)
<b>Roll length</b>	length [m] (± 1.5 %) / thickness [mm]: 30/4, 20/6

Example of **SPORTEC® variant** Individual-Mix 5 colours**SPORTEC® variant standard colours (1)**

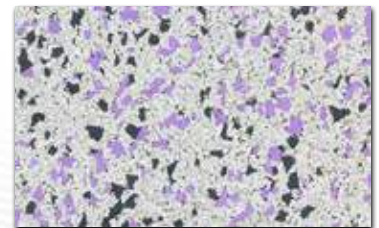
greyscale



blue freckles



choco mix



rocky plum

<sup>(1)</sup> Minimum order quantity: 1 roll<sup>(2)</sup> Minimum order quantity: 1 production unit



## **SPORTEC® UNI classic**

### IDEAL SPORTS FLOOR COVERING FOR INDOOR AREAS

**SPORTEC® UNI classic** has been specifically developed for indoor sports areas. It consists of 100 % compressed EPDM rubber and uniform colouring, which allows for the application of high-contrast sports field lines. Thanks to its excellent walking comfort and very good impact and room noise, the flooring is also highly suitable for commercial premises and offices.

#### Technical Data

<b>Material</b>	fine-grain EPDM colour granules, PU-elastomer bonded
<b>Colours</b>	red, green, blue, dark grey, beige (other colours available on request)
<b>Roll width</b>	1.250 mm (± 1,5%)
<b>Thickness</b>	4 mm (± 0,3 mm) (other thicknesses available on request)
<b>Roll length</b>	length (± 1,5%): 30 m

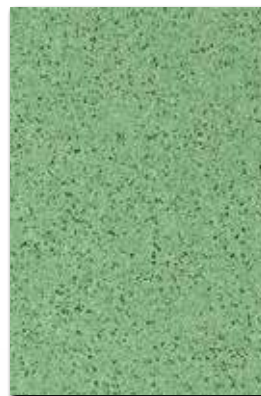
dark grey



beige



green



blue







## SPORTEC® UNI sandwich classic

### PREVENTING INJURY AND DAMAGE TO JOINTS IN INDOOR SPORTS FACILITIES

**SPORTEC® UNI sandwich classic** consists of a technically advanced elastic layer made from **SPORTEC® standard** material and a tried and tested **SPORTEC® UNI classic** floor covering. This combination prevents damage to joints and other injuries and is therefore particularly recommended for indoor sports facilities in schools, leisure centres and multi-purpose buildings. Both the elastic layer and the floor covering are supplied in rolls. The two layers are however installed separately. First, the elastic layer is glued to the substructure. After the adhesive has fully cured, the floor covering is glued to the elastic layer.

#### Technical Data

<b>Material</b>	top layer: Fine-grain EPDM colour granules, PU-elastomer bonded Elastic layer: Fine-grain recycled rubber tyre granules PU-elastomer bonded
<b>Colours</b>	surface layer: dark grey, red, blue, green, beige (other colours available on request) elastic layer: black
<b>Roll width</b>	Top layer: 1.250 mm ( $\pm 1,5\%$ ) Elastic layer: 1.500 mm ( $\pm 1,5\%$ )
<b>Thickness</b>	top layer: 4 mm ( $\pm 0,3$ mm) elastic layer: SPORTEC® standard standard thicknesses (other thicknesses available on request)
<b>Roll length</b>	top layer: 30 m ( $\pm 1,5\%$ ) elastic layer: Standard lengths (other lengths available on request)
<b>Compression load*</b>	0,7 N/mm <sup>2</sup> (EN 12230)
<b>Elongation at break*</b>	59% (EN 12230)
<b>Wear resistance*</b>	2,9 g (ISO 5470-1)
<b>Colour fastness*</b>	4 (ISO 105-A02)
<b>Friction (dry/wet)*</b>	101/56 (EN 13036-4)
<b>Vertical deformation*</b>	0,6 (EN 14809)
<b>Ball rebound properties*</b>	100% (EN 14877)

#### Standard colours for top covering:

dark grey



red



blue



green



beige



\* according to EN 14877 for UNI sandwich classic of thickness 4+4 mm



## SPORTEC® lino

### SAFETY AND COMFORT FOR PHYSICALLY ACTIVE PEOPLE

Enhance the safety and comfort of everybody involved in sports by installing **SPORTEC® lino** under your sports linoleum floor. This reliable elastic layer has been specially developed for indoor systems, for example in gyms and playschools. The tried and tested, anthracite-coloured closed-cell rubber layer made from recycled material (PU-elastomer bonded) provides natural cushioning support for all physical activities. **SPORTEC® lino** enhances any indoor sports, fitness, play or fun facility for young and old and helps prevent injury, especially in children. **SPORTEC® lino** is therefore the ideal solution for school and preschool sports facilities.

#### Technical Data

<b>Material</b>	fine closed-cell rubber made from recycled material, PU-elastomer bonded
<b>Volumetric weight</b>	approx. 600 kg/m <sup>3</sup>
<b>Thickness</b>	anthrazit
<b>Roll width</b>	1.250 mm (± 1,5 % mm)
<b>Roll length</b>	20 m (± 1,5 % mm)
<b>Colour</b>	anthracite
<b>Area weight</b>	approx. 3,6 kg/m <sup>2</sup>
<b>Tensile strength</b>	approx. 0,4 N/mm <sup>2</sup> (EN ISO 1798)
<b>elongation at break</b>	approx. 70% (EN ISO 1798)
<b>Thermal resistance</b>	0,06 m K/W (ISO 8302)
<b>Electrical resistance</b>	12.000,00 mega ohm (DIN 54345 T6)
<b>Temperature resistance</b>	- 30°C to + 80 °C

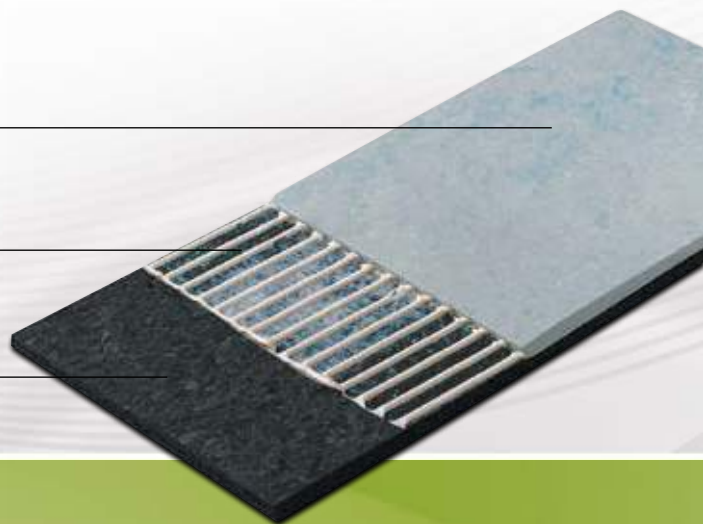
#### Properties

- Underlay for installation under sports linoleum floors
- Elastic layer for improved joint protection
- Made in high-quality, elastic material
- Ideal for playschools and gyms
- Easy installation

Sports linoleum

Adhesive

SPORTEC® lino







## SPORTEC® standard • trend • premium • soft

### THE IDEAL UNDERLAY — AVAILABLE IN VARIOUS SHOCK ABSORPTION CLASSES AND PRICE CATEGORIES

**SPORTEC® standard** is a widely used elastic layer for sports and multi-purpose facilities where volleyball, hand ball, basket ball, badminton and tennis are played. Sports floors with an integrated **SPORTEC® standard** layer are hard-wearing, improve safety and help prevent damage to joints. **SPORTEC® trend** has been developed on the basis of our all-rounder **SPORTEC® standard**. The elastic layer consists of a well-balanced combination of closed-cell rubber made from recycled material and fine-grain recycled rubber tyre granules and offers improved shock absorption compared with the standard product. This enhanced elastic layer therefore offers unrivalled flexibility and excellent ball rebound properties, and is easy to install. The **SPORTEC® premium** elastic layer is made from recycled closed-cell rubber and recycled rubber tyre granules. It has been designed for exceptionally high shock absorption without exceeding the maximum permissible deformation limits (according to EN 14904). **SPORTEC® premium** therefore offers optimum protection for joints and minimises the risk of injury, which makes it the ideal solution for school sports facilities, leisure centres and multi-purpose sports complexes. **SPORTEC® soft** is a special mix of fine-grain recycled cellular rubber granules and rubber fibres and has been specially developed as a high performance elastic layer for spike resistant systems. **SPORTEC® soft** also offers unrivalled shock absorption properties helping to achieve Grade 2 performance levels according to norm EN 14904.

#### Technical Data

<b>Material</b>	fine-grain recycled rubber tyre granules, PU-elastomer bonded ( <b>trend</b> and <b>premium</b> with additional closed-cell recycled rubber, <b>soft</b> : Mix of fine-grain recycled cellular rubber granules and rubber fibres)
<b>Volumetric weight</b>	approx. 770 ( <b>trend</b> approx. 600, <b>premium</b> , approx. 600, <b>soft</b> approx. 560 kg/m³)
<b>Colour</b>	schwarz ( <b>soft</b> : multi-coloured)
<b>Roll width</b>	1.500 mm (± 1,5 % mm)
<b>Thickness</b>	3, 4, 5, 6, 7, 8, 9, 10, 12, 14 mm <sup>(1)</sup> (± 0,3 mm)
<b>Roll length</b>	Length [m] (± 1,5%) / thickness [mm]: <b>soft</b> : 15/9, 15/10, 15/12, 15/14 ; <b>trend, premium, standard</b> : 40/3, 30/4, 24/5, 20/6, 17/7, 15/8, 13/9, 12/10, 10/12, 9/14 <sup>(2)</sup> [40/3 only <b>standard</b> ]
<b>Tensile strength</b>	approx. 0,6 N/mm² [EN ISO 1798]; ( <b>trend, premium</b> and <b>soft</b> 0,3 N/mm²)
<b>Elongation at break</b>	approx. 60% (50% <b>soft</b> ) [EN ISO 1798]

Characteristic:	Volumetric weight	Tensile strength	Force reduction*
<b>SPORTEC® standard</b>	ca. 770 kg/m³	0,60 N/mm²	> 25 % mit 10 mm
<b>SPORTEC® trend</b>	ca. 600 kg/m³	0,30 N/mm²	> 25 % mit 8 mm
<b>SPORTEC® premium</b>	ca. 600 kg/m³	0,30 N/mm²	> 25 % mit 6 mm
<b>SPORTEC® soft</b>	ca. 560 kg/m³	0,30 N/mm²	39 % at 10 mm

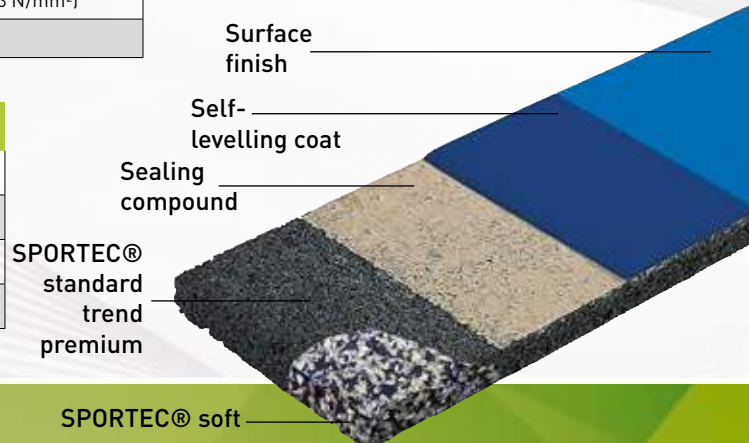
\* [EN 14904, type P1]

<sup>(1)</sup> **trend**: 4, 5, 6, 7, 8, 9, 10, 12 mm ; **soft**: 9, 10, 12, 14 mm ; 3 mm **standard** only

<sup>(2)</sup> 9/14 **premium** only ; 40/3 **standard** only

#### Properties

- Made from recycled rubber
- Excellent noise absorption properties
- Water-repellent
- Good to very good ball rebound properties
- Uniform elasticity across the floor
- Suitable for underfloor heating



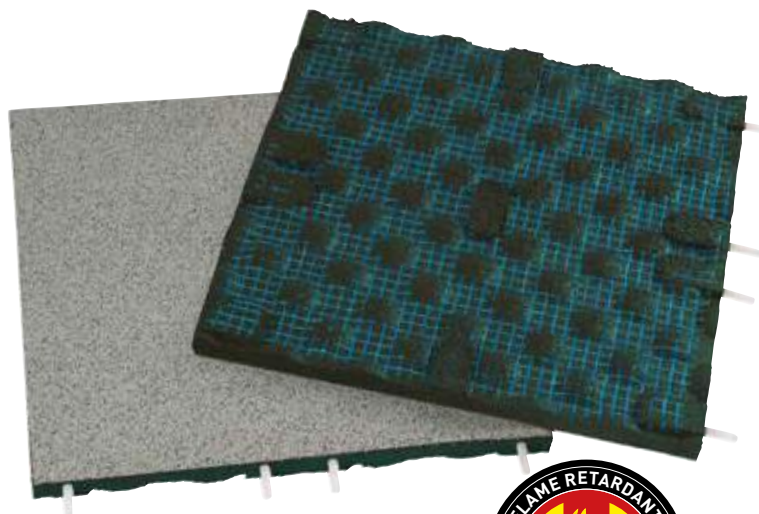


## SPORTEC® style

THE IDEAL WEIGHTLIFTING SOLUTION TO PROTECT AGAINST SHOCK AND NOISE

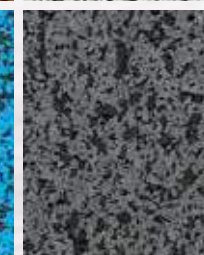
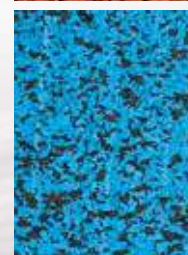
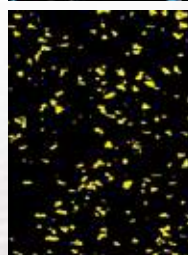
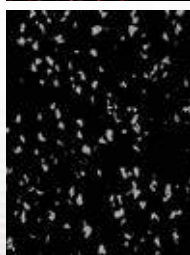
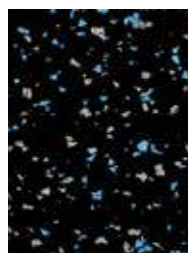
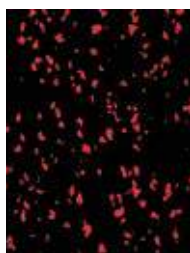
**SPORTEC® style** protects subfloors from damage by falling heavy objects, e.g. in weightlifting areas of fitness centres or training facilities. Even if not themselves damaged by falling weights, conventional floor surfaces transmit impact shock which often results in serious damage to the concrete subfloor. **SPORTEC® style** avoids this deep-impact damage while providing outstanding sound deadening as well.

Available with **SPORTEC® color** or **SPORTEC® purcolor** finishes, **SPORTEC® style** can be used as an overlay with blends in with our standard product range. **SPORTEC® style purcolor** has the Cfl-s1 fire classification.



### Technical Data

<b>Material</b>	Polyurethane-bonded recycling tyre rubber granules, Surface <b>SPORTEC® color 15</b> / <b>purcolor</b>
<b>Thickness</b>	30 mm (± 2 mm)
<b>Dimensions</b>	500 x 500 mm or 1.000 x 500 mm
<b>Colours</b>	different colours
<b>Area weight</b>	approx. 27 kg/m²
<b>Tensile strength</b>	approx. 0,7 N/mm² (EN ISO 1798)
<b>Elongation at break</b>	approx. 70% (EN ISO 1798)
<b>Temperature resistance</b>	- 30°C to + 80 °C



surfaces **SPORTEC® color 15**  
(also available in Color 0)

surfaces **SPORTEC® purcolor**





## **SPORTEC® style edge- and corner profiles**

ACCESSORIES FOR MORE SAFETY

**SPORTEC® style Edge and Corner Profiles** are the perfect complement to our **SPORTEC® style** tiles. With its beveled edges, they provide a smooth and safe transition zone, reducing the risk of tripping when entering or leaving heavy weight areas.



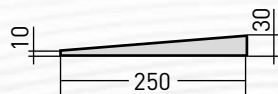
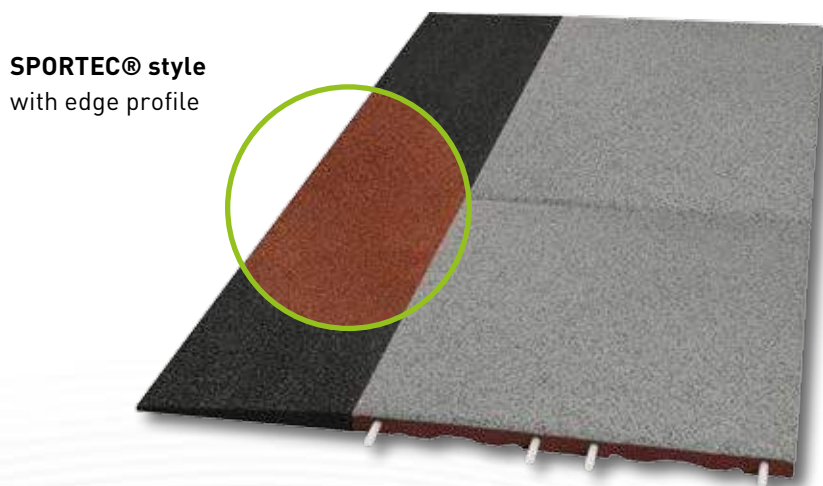
**SPORTEC® style Edge and Corner Profiles** have to be glued onto substrate as well as the joints between the profiles with a 1-component PUR adhesive.

We recommend **Ottocoll P83** and **Ottocoll M 500** which are available in black and red.

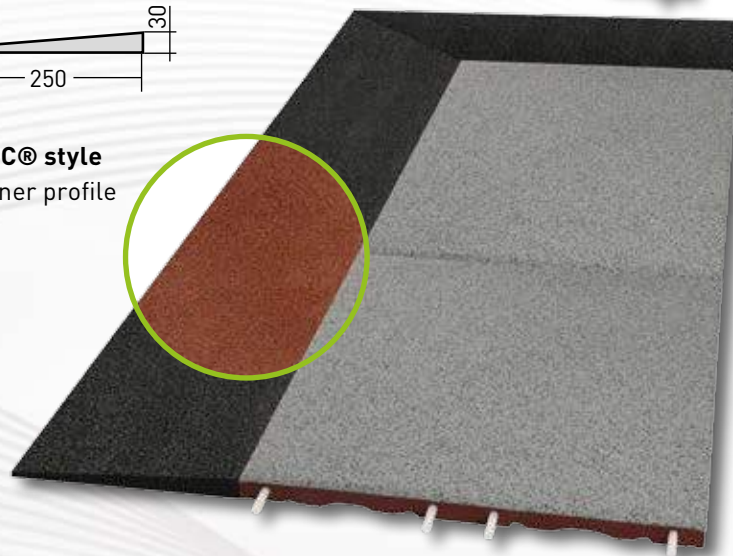
Technical Data	
Material	recycled rubber
Thickness	edge profile: 30/10 mm corner profile: 30/10 mm tolerances: $\pm 2$ mm
Dimensions	edge profile: 1.000 x 250 mm corner profile: 1.000 x 250 mm tolerances: $\pm 0,8$ %
Colour*	black or red

\* other EPDM colours available on request

**SPORTEC® style**  
with edge profile



**SPORTEC® style**  
with corner profile







## SPORTEC® sprint

### HIGH-PERFORMANCE INDOOR FLOORING PRODUCT FOR TOP ATHLETES

The **SPORTEC® sprint** elastic layer offers extra strength and reliability for indoor athletics facilities, especially in the start and warm-up areas. **SPORTEC® sprint** is a cost-effective solution designed for fast installation.

The floor surface made in polyurethane with interspersed EPDM granules makes the Sportec sprint product extremely durable, resistant to wear and spike-proof. A special reinforcing layer guarantees dimensional stability and durability, effectively stabilising the movements of track and field athletes and other sports enthusiasts over a long period of time. **SPORTEC® sprint** is rot-proof and does not harden or become brittle over time.

## Properties

- Long service life
- Easy to install and replace
- No hardening or embrittling over time

### Technical Data

Material	high-grade recycled rubber granules, PU-elastomer bonded
Volumetric weight	approx. 1.050 kg/m³
Thickness	8, 9, 10 mm (± 0,3 mm)
Roll width	1.500 mm (± 1,5 % mm)
Length	length [m] (± 1.5 %) / thickness [mm]: 40/8, 35/9, 32/10
Colour	multi-coloured
Tensile strength	approx. 0,8 N/mm² [EN ISO 1798]
Reißdehnung	approx. 125% [EN ISO 1798]
Spike resistance	Class I (DIN 18035, part 6)

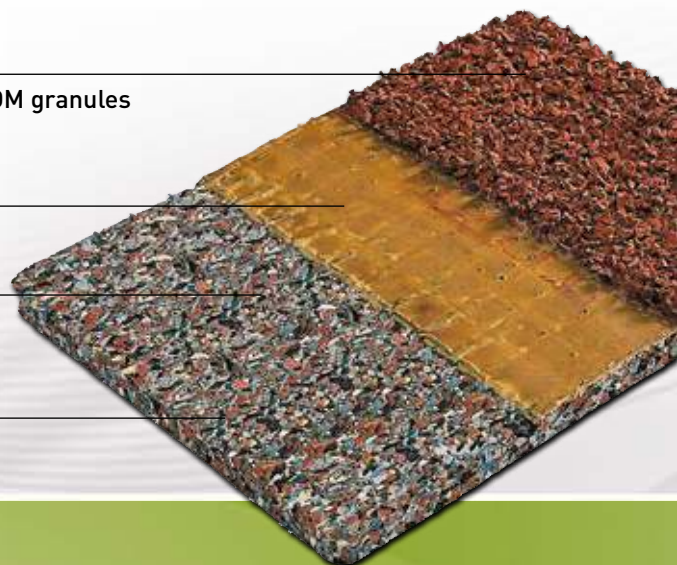


PU layer with  
interspersed EPDM granules

Sealing  
compound

Reinforcing  
layer for  
dimensional stability

SPORTEC® sprint







## SPORTEC® team arena

### EXCELLENT SAFETY FOR INDOOR SPORTS AND PLAY

**SPORTEC® team arena** is a substructure developed specially for indoor artificial turf, installed in soccer halls and similar facilities. Apart from outstanding impact absorption and ball rebound properties, the fine granule structure of the **SPORTEC® team arena** offers great walking comfort and a play experience that is similar to that of real turf. **SPORTEC® team arena** is supplied in rolls for easy and fast installation.

## Properties

- Long service life
- Easy to install and replace
- Installation as loose layer



### Technical Data

<b>Material</b>	Special mixture made from selected recycled rubber granules, PU-elastomer bonded
<b>Volumetric weight</b>	approx. 800 kg/m <sup>3</sup>
<b>Thickness</b>	8, 9, 10, 12 mm (± 0,3 mm)
<b>Roll width</b>	1.500 mm (± 1,5 % mm)
<b>Length</b>	length [m] (± 1.5 %) / thickness [mm]: 40/8, 35/9, 31/10, 26/12
<b>Colour</b>	multi-coloured
<b>Tensile strength</b>	approx. 0,3 N/mm <sup>2</sup> (EN ISO 1798)
<b>Elongation at break</b>	approx. 50% (EN ISO 1798)





## SPORTEC® shooting FOR IDEAL PROTECTION IN SHOOTING HALLS

Specifically designed as a projectile-absorbing surfacing material, **SPORTEC® shooting** provides protection over floors, walls and ceilings of indoor shooting ranges and nearby outdoor facilities. **SPORTEC® shooting** reliably absorbs dangerous ricochets and rebounds as documented by independent test reports. The material's remarkable elasticity makes bullet holes practically invisible after absorption. **SPORTEC® shooting slabs** installed on floors should be covered with an appropriate fireproof PU coating. It provides a seamless surface which can be easily cleaned of gunpowder deposits. On walls and ceilings this coating is not required.



**SPORTEC® shooting**  
for wall and ceiling

When SPORTEC® shooting is used as a floor covering we advise applying a fireproof polyurethane sealing after the installation. SPORTEC® shooting then complies with Bfl-s1 according to EN 13501-1.

### Technical Data

<b>Material</b>	Recycling tyre rubber granules bonded with polyurethane elastomer
<b>Thickness</b>	40 mm (± 2 mm)
<b>Dimensions</b>	500 x 500 mm / 1.000 x 500 mm (± 0,8 %)
<b>Colour</b>	red (black and green on request)
<b>Area weight</b>	approx. 27 kg/m <sup>2</sup>
<b>Tensile strength</b>	approx. 0,2 N/mm <sup>2</sup> (EN ISO 1798)
<b>Elongation at break</b>	approx. 50% (EN ISO 1798)
<b>Temperature resistance</b>	- 30°C to + 80 °C
<b>Fire resistance</b>	E <sub>fl</sub> (B2) (DIN EN 13501-1) B <sub>fl</sub> -s1 (B1) (DIN EN 13501-1)

### ALSO AVAILABLE ON REQUEST: SPORTEC® shooting blocks

Please ask our sales team  
for more details







## ADHESIVE SPORTEC® UN 700 / SEALING RZ TURBO PROTECT ZERO

### PERFECT PROTECTION AND HOLD FOR ALL SPORTEC® MATERIALS

**RZ TURBO PROTECT ZERO** is a solvent-free 2-component sealing finish for extreme longterm protection of elastic artificial flooring. Provides a very elastic and sturdy protection layer, having very high resistance to heavy mechanical wear and chemical attack.

#### Technical Data

Shelf life	9 months
Packsize	5 l + 500 ml hardener
Working temperature	15 - 25 °C
Pot life (20°C)	120 min. (20 °C / 60 % relat. LF)
Set to foot traffic (20°C)	after approx. overnight drying
Final strength (20°C)	after approx. 7 days



**SPORTEC® UN 700** is the two component polyurethane adhesive for gluing **SPORTEC®** materials on paved substrates. It is suitable for all floor coverings and elastic layers of the brand **SPORTEC®** and can be applied to nearly all paved substrates.

#### Technical Data

Packaging	Set of 10 kg: mixing ratio of Resin Base : Curing Agent = 850 : 150 Set of 25 kg: mixing ratio of Resin Base : Curing Agent = 850 : 150 Set of 28 kg: mixing ratio of Resin Base : Curing Agent = 850 : 150
Pot life (20°C)	approx. 30-60 minutes
Can be walked on after (20°C)	after approx. 8 hours
fully cured after (20°C)	after approx. 36 hours





## ENVIRONMENTAL MANAGEMENT AT KRAIBURG RELASTEC






### FROM OLD TYRES TO TOP-QUALITY FINISHED PRODUCTS

**KRAIBURG Relastec** is one of the best known global companies that specialise in the production of technical rubber materials from old tyres. As a recycling specialist, we have for many years been committed to the protection of the environment. Every year, we process and recycle about 85,000 tons of old tyres, closed-cell rubber and rubber production scrap. From these raw materials, we produce high-quality granules based on our internally developed formulations. These granules make up more than 90 % of the material used in our finished products. All our products are 100 % recyclable without loss of quality.

At **KRAIBURG Relastec**, protecting the environment is a strategic priority. We are convinced that sustainable growth is only achievable, if we meet our responsibilities towards the environment. **KRAIBURG Relastec** has therefore adopted a very simple policy: Protecting the environment is part and parcel of what we do every day!

Our “**pro environment**” logo stands not only for 40 years of sustainable business practices that protect resources, but emphasises our commitment to product quality and continuous improvement for the protection of the environment beyond the statutory regulations.



-  We turn waste rubber materials into new raw materials and products, making a valuable contribution to waste reduction and the protection of the environment.
-  We invest in innovative and environmentally friendly production methods and technologies.
-  Our products are subject to continuous quality testing and further development, whereby environmental concerns are given priority. We are always on the lookout for even more environmentally friendly alternatives that enable us to further reduce emissions and protect resources.
-  All employees of KRAIBURG Relastec undertake to implement sustainable practices in their daily work and to protect the environment wherever they can.
-  We expect the same from our suppliers and constantly monitor their performance.





## KRAIBURG RELASTEC GMBH & CO. KG

### OTHER PRODUCTS MADE FROM RECYCLED RUBBER GRANULES

**KRAIBURG Relastec GmbH & Co. KG** is a subsidiary of **KRAIBURG** Holding.

We supply the global market with finished products for noise insulation (**DAMTEC®**), impact protection (**EUROFLEX®**), building protection and shock absorption (**KRAITEC®**) and sports flooring systems (**SPORTEC®**). For more information, visit our website at [www.kraiburg-relastec.com](http://www.kraiburg-relastec.com)






**ACOUSTIC AND VIBRATION INSULATION**  
made from recycled rubber

Engineered solutions against noise.

[www.kraiburg-relastec.com/damtec](http://www.kraiburg-relastec.com/damtec)  
**DAMTEC®**

- Impact sound insulation material for installation under floor coverings and screeds and on timber floor structures
- Vibration damping and structure-borne sound insulation

**STRUCTURAL PROTECTION**  
made from recycled rubber

for field-proven protection against physical damage

[www.kraiburg-relastec.com/kraitec](http://www.kraiburg-relastec.com/kraitec)  
**KRAITEC®**

- Structural protection
- Anti-slip mats for transport load securing
- Flooring for patios and balconies




**SHOCK-ABSORBENT SURFACING SYSTEMS FOR PLAYGROUNDS**  
made from recycled rubber

For Our Childrens' Safety.

[www.kraiburg-relastec.com/euroflex](http://www.kraiburg-relastec.com/euroflex)  
**EUROFLEX®**

- Shock-absorbent surfacing systems for playgrounds and sports facilities
- Peripheral elements and accessories

***SPORTEC***<sup>®</sup>

**RUBBER FLOORING PRODUCTS  
& ELASTIC LAYERS**  
made from recycled rubber granules

KRAIBURG Relastec GmbH & Co. KG  
Fuchsberger Straße 4 · D-29410 Salzwedel, Germany

**Sales:**

Tel. +49 (0) 8683 701 -340

Fax +49 (0) 8683 701 -4340

[sportec@kraiburg-relastec.com](mailto:sportec@kraiburg-relastec.com)

[www.kraiburg-relastec.com/sportec](http://www.kraiburg-relastec.com/sportec)

No liability accepted for errors or omissions. Subject to changes without prior notice.  
© KRAIBURG Relastec GmbH & Co. KG 2014

