

1. Application

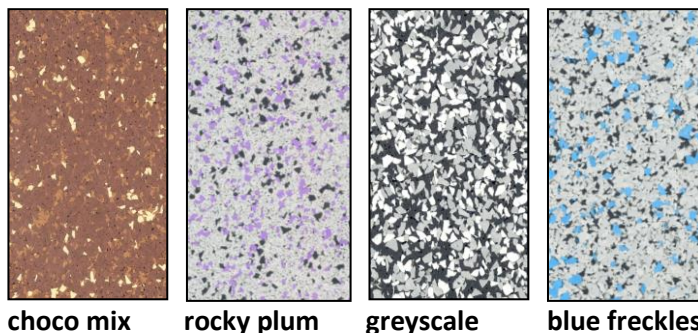
SPORTEC® variant floor coverings are available in virtually unlimited colour combinations from the EPDM colour range. It is the ideal flooring for offices, retail and outlets rooms. Thanks to its strong colours, it can be perfectly matched to the interior design, while offering effective impact and room noise and improved walking comfort. Other reasons that speak for **SPORTEC® variant** are the easy installation and cleaning of the floor covering.

2. Material

Free choose of colour combination from the EPDM colour range, bonded with polyurethane elastomer (black recycled tyre rubber granule share possible on request).

3. Product Design

Colours:



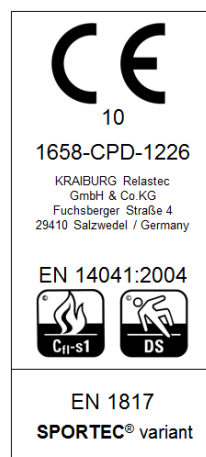
These 4 standard colours are available from stock. All colours freely selectable as chosen by customer from the EPDM colour range (minimum order quantity) low colour differences are conditional of material granule structure with coloured EPDM granules

Surface:

4. Dimensions/Tolerances

Width:	1,250 mm (± 1.5 %)
Thickness:	4 mm, 6 mm (± 0.3 mm) (other thicknesses on request)
Volumetric weight:	approx. 1,250 kg/m ³
Roll length (± 1.5 %):	30 m (at 4 mm) 20 m (at 6 mm)
Area weight:	approx. 5.0 kg/m ² approx. 7.5 kg/m ²

The product data sheet is not subject to any change service! All information is without guarantee. Latest version of this document available on www.kraiburg-relastec.com/sportec



5. Product Testing

Fire resistance:	C _{fl} -s1 (B1)	(DIN EN 13501-1)
Tensile strength:	min. 0.7 N/mm ²	(EN ISO 1798)
Elongation at break:	min. 70 %	(EN ISO 1798)
Hardness:	60 ± 5 Shore A	(DIN 53505)
Temperature range:	-30°C to 80°C	(internal test)
Abrasion:	max. 450 mm ³	(DIN 53516)
Coefficient of friction:	> 0.30 μ (DS)	(EN 13893)
Anti-slip property:	R 9	(DIN 51130)
Step sound insulation:	16 dB (at 6 mm)	(DIN EN ISO 140-8:1998-03)
	18 dB (at 8 mm)	(DIN EN ISO 140-8:1998-03)
Acoustical absorption:	α _w = 0.15 (at 6 mm)	(DIN EN ISO 354:2003-12)
	α _w = 0.15 (at 8 mm)	(DIN EN ISO 354:2003-12)
Remaining deformation:	1.32 mm (at 6 mm)	(EN 433:1994-11)
	0.54 mm (at 8 mm)	(EN 433:1994-11)
Compression set:	approx. 15 %	(internal tested)
Electrostatic properties:	2.6 kV	(DIN EN 1815:1995-06)
Thermal resistance:	0.029 m ² K/W (at 4 mm)	(DIN EN 12664:2001)
	(Suitable for underfloor heating)	
Light fastness:	4 (5*)	(DIN EN 105-B02:2002)
	(* when sealed with adapted 2-K-PU sealer)	
Use with wheel chairs:	for permanent use adapted	
	(DIN EN 1307: 1997-06)	
	(Tested at 6 mm and 8 mm thickness)	

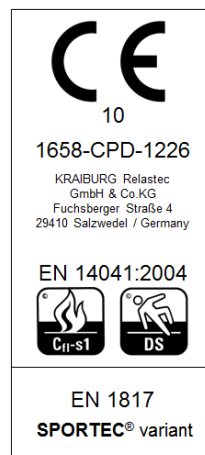
6. Installation

Installation has to be done in accordance to the Installation Recommendation of **SPORTEC® variant**. The latest version of the Installation Recommendation can be downloaded at the website of KRAIBURG Relastec GmbH & Co. KG.

7. Sealing

It is recommended to seal the floor covering **SPORTEC® variant** with 2 components PU sealer system "RZ turbo protect" which is available directly from our company. Small damages at the sealed surface can be tread afterword by using a „RZ Refresher Set“ to retain the visual effect.

The product data sheet is not subject to any change service! All information is without guarantee.
Latest version of this document available on www.kraiburg-relastec.com/sportec



page 2 of 2