

Description

TP651 Trio is an impregnated foam tape which provides a weather seal to 600 Pa, thermal insulation within the perimeter joint, and airtightness against the window reveal. TP651 is the perfect solution to maintain the benefits of 'A' – rated windows.

Colour

External face : anthracite. Internal face: powder coated, light grey

Packaging

Supplied on pre-compressed rolls, with self-adhesive on one side for initial location.

Dimensions

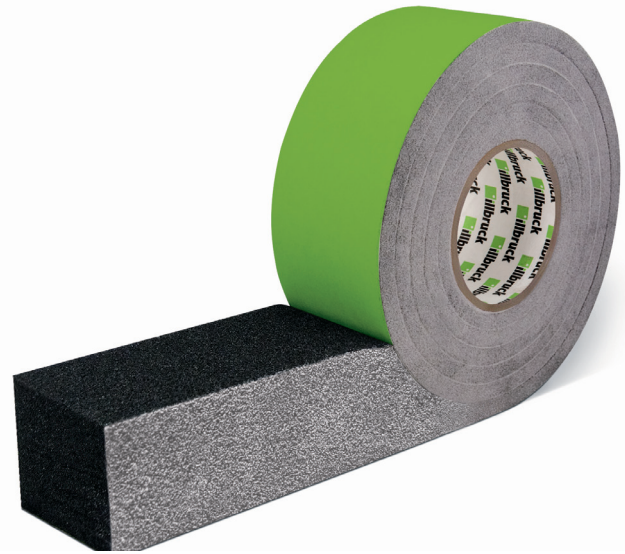
Joint Depth (tape width) (mm)	Joint Width (tape thickness range) (mm)	Roll Length (m)
35	3- 7	15
35	5- 10	10
35	7- 15	6
30	3- 7	15
30	5- 10	10
30	7- 15	6

Tools

Tape measure, cutting shears or knife and a flat bladed tool are required for installation.

Installation Method

- Select tape size from table above to suit the available depth into the joint and joint width variation (eg 35/3 – 7 : tape width 35 mm / joint width variable between 3 – 7 mm). (BS8213-4 : 2007 Code of Practice for survey & installation of windows recommends for white PVC-U windows, the recommended joint width is 5 mm and 7.5 mm for dark frames, in both cases for frames up to 3 m wide).
- Store the rolls of tape in a cool location prior to use. This will slow the expansion time once the tape is applied to the frame and provide more time for the window to be positioned into the opening.
- Remove any contamination or mortar residue from the reveal. Any areas where significant undulations or damage is present should be repaired locally using an appropriate mortar. Check presence and condition of DPM and ensure cavities are filled/closed prior to fitting the new window.
- Prior to installing the window, and when using a new roll of TP651, cut off the wedge shaped start of the roll and apply the tape to the outer edge of the window frame, recessed back from the external frame face by 1 – 2 mm, ensuring that the light grey tape face is to the inside of the opening. Apply to the head first and then the two sides.
- Apply a separate length for each side to be sealed, bonding with the aid of the self-adhesive strip (See Fig. 2). Normally, the TP651 is applied to the head and two sides to allow for insertion of packers under the cill.



TP651

Trio

Application Instructions

Application Instructions

- Allow an extra 10 mm/m when cutting the tape length to allow for potential shrinkage- the dimension should be based on the opening size, not frame dimension. Make tight butt joints at the corners and between the end of one roll and start of another. Pay particular attention to the corner joints (See Fig. 3).
- The window is then immediately installed into the opening. Should the tape expand significantly before locating the frame fully into the opening, a flat bladed tool can be used to locally re-compress.
- Use packers under the cill to support and level the frame.
- The window can now be fixed, ideally through the frame. We recommend a suitable window fixing (e.g. SFS SPTR-C type or similar) for imposed load relief, which allows lateral positioning of the frame and does not require frame packers, or alternatively use appropriate fixing brackets. If frame packers are considered necessary temporarily, place a packer which is of the appropriate thickness to fill the joint width less the compressed tape thickness (eg. for 3 mm tape in a 5 mm joint, use a 2 mm packer). Once the frame is levelled up and fixed, the packer can be removed and the tape will continue to expand.
- On expansion, the tape will completely fill the joint width and provide a full seal. Any unintended small gaps at joints should be sealed with illbruck FS500 low modulus neutral cure silicone or illbruck SP525 hybrid sealant (black).
- In order to maintain the thermal insulation, FM330 Pro Foam Airseal should then be applied under the cill. Once this is cured, the ends of the window cill and the gap between the underside of the cill and structural opening should be sealed with a suitable sealant (eg. FS500 or SP525) against the external reveal. Ensure that window cill end caps protrude for the full frame depth rather than just the projecting part of the cill.
- If required and if internal plaster finishes have been removed, air-tightness can be enhanced by applying an illbruck membrane (eg. ME500) to the internal frame face and sealing to the internal reveal. Similarly, if access is possible to the internal side of the perimeter joint, it is recommended to apply illbruck FM330 Pro Foam Airseal to enhance the thermal insulation behind the TP651. The FM330 should be applied after the TP651 has fully expanded and sealed the joint.

Please Note

High temperatures accelerate tape expansion, while low temperatures delay this. At ambient temperatures above 20°C, the tape should be stored in a cool place on the construction site away from direct sunlight. A small fridge is ideal for this. Remaining rolls in opened boxes should be maintained in a horizontal state and weighed down to prevent lateral expansion (telescoping) of the rolls. Whilst it is unnecessary to seal over the external face of the tape for weather tightness, the exposed edge can be plastered or painted over. The compatibility of sealants must be tested. In some cases, white sealants can be incompatible. The tape must not come into contact with chemicals containing solvents or aggressive chemicals.

Health & Safety Precautions

Safety data sheet must be read and understood before use.

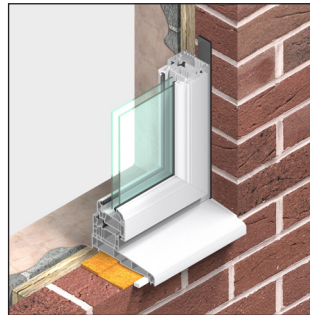


Fig. 1
TP651 installed (FM330 under cill)

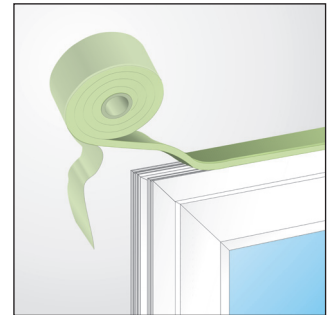


Fig. 2
Apply TP651 to edge of frame

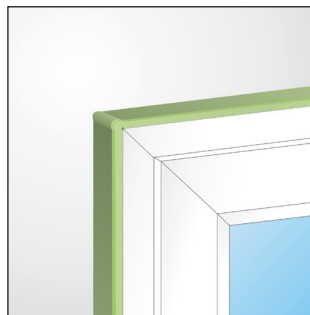


Fig. 3
Corner jointing details

Technical Service

tremco illbruck has a team of experienced Technical Sales Representatives who provide assistance in the selection and specification of products. For more detailed information, service and advice, please call Customer Services on 0191 419 0505.

Guarantee / Warranty

tremco illbruck products are manufactured to rigid standards of quality. Any product which has been applied (a) in accordance with tremco

illbruck written instructions and (b) in any application recommended by tremco illbruck, but which is proved to be defective, will be replaced free of charge.

No liability can be accepted for the information provided in this leaflet although it is published in good faith and believed to be correct. tremco illbruck Limited reserves the right to alter product specifications without prior notice, in line with Company policy of continuous development and improvement.



tremco illbruck Limited
3A Walton Road, Pattinson North
Washington NE38 8QA
United Kingdom
T: +44 191 419 0505
F: +44 191 419 2200

sales.uk@tremco-illbruck.com
www.tremco-illbruck.co.uk