

# Liquid Rubber®:

## Revolutionary 2 component series

The Liquid Rubber® two component series are protective coatings that are specially designed as a waterproof and air barrier protective layer. The coatings are an environmentally friendly water based alternative for the conventional hot-applied bitumen or solvent-based coatings.

### The special characteristics:

- waterproof, vaportight, airtight and gastight.
- strong, seamless and fully adherent to the surface.
- effective for waterproofing and protection against corrosion.
- high elasticity (up to 1200%).
- UV- and acid-resistant.
- sustainable.
- resistant against large temperature fluctuations (-40 °C to +160 °C).
- water based.
- **environmentally** friendly and contains no VOC's or other toxics.

## Quality & sustainability

Liquid Rubber® two component series are protective coatings of a high quality and sustainability. The BelowGrade and MineCoat have a product warranty of 25 years. The SprayGrade has a product warranty of 15 years. All coatings are provided with a CE mark and are externally tested according to ASTM international standards.



## SprayGrade, BelowGrade & MineCoat

Liquid Rubber® coatings are divided into three segments and specially developed for different surfaces and situations:



### SprayGrade

The SprayGrade is perfect to protect and waterproof all kinds of roofing system like corrugated sheets, polyurethane, polystyrene, asbestos sheets, plywood, bitumen, PVC and many more.



### BelowGrade

The BelowGrade is perfect to protect and waterproof all kinds of brickwork, concrete constructions or other minerals.

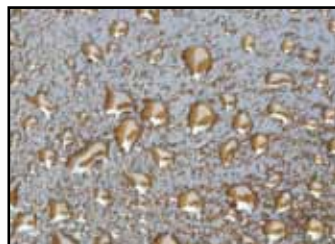


### MineCoat

The MineCoat is perfect to protect and conserve all kinds of metals like zinc, galvanized steel and aluminium.

## Applications

The seamless and environmentally friendly coatings have a wide range of applications because of the great adhesion on almost every surface. For example: minerals, wood, existing roofing, plastic, PVC, insulation panels, metal and many more surfaces. The second component abstracts the moisture from the Liquid Rubber product that results in a quick drying product applied in one action.



## Application system

For the application of the two component series of Liquid Rubber®, a HVLP 2000 pump system is being used. The Liquid Rubber and the B-component are separately connected to the pump. The system is equipped with a dual spray gun. This means that the two separated products are combined just before they hit the surface. The high power and long hoses make it possible to apply on a long distance from the pump. Because of the low pressure of the pump, the atomization is minimal.



## Packaging & usage

Liquid Rubber® two component series are available in drums of 205 litre or IBC's of 1000 litre. The usage is depending on the type of surface and the purpose of the application. The minimum layer thickness of a waterproof membrane is 2mm.

Thickness	m <sup>2</sup>	litre
1mm	1 m <sup>2</sup>	1.35L
2mm	1 m <sup>2</sup>	2.70L
3mm	1 m <sup>2</sup>	4.05L



[www.liquidrubbereurope.com](http://www.liquidrubbereurope.com)

for more information

and reference projects