

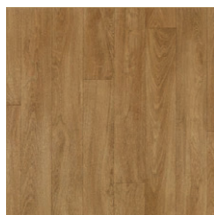


Wood - Traditional Light Oak



Traditional Oak Light

- 4676 001
- 26752 001
- 26753 001



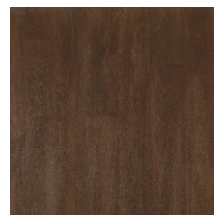
Traditional Oak Natural

- 4676 002
- 26752 002
- 26753 002



Traditional Oak Brown

- 4676 003
- 26752 003
- 26753 003



Traditional Oak Dark

- 4676 004
- 26752 004
- 26753 004



Trend Oak Brown

- 4676 005
- 26752 005
- 26753 005



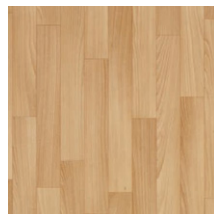
Trend Oak Natural

- 4676 006
- 26752 006
- 26753 006



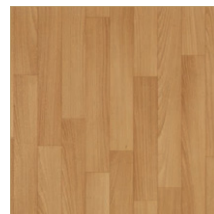
Trend Oak White

- 4676 007
- 26752 007
- 26753 007



Beech Light

- 4676 008
- 26752 008
- 26753 008



Beech Natural

- 4676 009
- 26752 009
- 26753 009

TECHNICAL DATA	STANDARDS	Safetred		
		Design	Design LL	Design Acoustic
<b>Classification</b>				
Type of floor covering	EN 13845	Heterogeneous safety floorings		
Classification	EN 13845 commercial industrial	Classes: 34 43	Classes: 34 43	Classes: 34 43
<b>Characteristics</b>				
Total thickness	ISO 24346 (EN 428)	2.0mm	2.35mm	3.5mm
Total weight	ISO 23997 (EN 430)	3 340g/m <sup>2</sup>	3 410g/m <sup>2</sup>	3 750g/m <sup>2</sup>
Safety Clean XP™ PUR reinforcement	—	Yes		
<b>Technical performances</b>				
Abrasion	EN 13845 Annex D	≤10% particle loss after 50,000 cycles		
Residual indentation	Average measured value	≤ 0.10mm		0.15mm
	ISO 24343-1 (EN 433) requirement			≤ 0.20mm
Furniture leg	EN 424	No damage		
Castor chair	ISO 4918 (EN 425)	No damage		
Dimensional stability	ISO 23999 (EN 434)	≤ 0.40%		
Curl resistance to heat	ISO 23999 (EN 434)	≤ 2mm		
Reaction to fire	EN 13501-1	B <sub>fl</sub> s1 on cement	C <sub>fl</sub> s1 on cement	C <sub>fl</sub> s1 on cement
Slip resistance	TRRL Pendulum 4S (wet) BS 7976 part 2 DIN 51130 Surface Roughness Rz EN 13893	> 36  R10 > 20µm ≥ 0.3		
Impact sound reduction	EN ISO 140-8 EN ISO 717/2	ΔL <sub>w</sub> = 4dB	ΔL <sub>w</sub> = 11dB	ΔL <sub>w</sub> = 17dB
Electrical resistance	EN 1815 EN 1081 EN 14041	< 2kV on concrete > 10 <sup>9</sup> ohms. Antistatic on concrete		
Light fastness	EN ISO 105-B02	7		
Chemical resistance	ISO 26987 (EN 423)	Good resistance to everyday substances		
Hygiene	—	Does not contribute to infection spreading		
Thermal resistance Underfloor heating	EN 12524	0.01m <sup>2</sup> K/W - Max 27°C (Typical values)		

The above information is subject to modifications for the benefit of further improvement (07/2015).  
For more detailed technical information, please contact Tarkett.



Traditional Oak Anthracite

- 4676 010
- 26752 010
- 26753 010

## General Information

**Safetred Design**

0170-0008-DoP-2014-06  
<http://professionals.tarkett.com>

Manufactured by Tarkett Ltd  
Leitham WC17 29K, England

EN 14041:2004

**Safetred Design LL**

0170-0007-DoP-2014-07  
<http://professionals.tarkett.com>

Manufactured by Tarkett Ltd  
Leitham WC17 29K, England

EN 14041:2004

**Safetred Design Acoustic**

0170-0010-DoP-2014-08  
<http://professionals.tarkett.com>

Manufactured by Tarkett Ltd  
Leitham WC17 29K, England

EN 14041:2004

# SAFETRED DESIGN Wood

## Main Product Features

- R10 slip resistance, sustainable through product life
- Designed not to look like a safety floor: wide offer of wood designs
- New Safetred Design Loose-Lay (LL) option: ideal for refurbishments projects
- New Safetred Design Acoustic option: 19dB sound reduction
- Safety Clean XP™ PUR reinforced surface for improved stain resistance and easy maintenance

## Surface Treatment



## Sustainability Tag

### Safetred Design

100%

42%

Recyclable  
Recycled content

PHTHALATE  
FREE  
Technology

(1)

<100 µg/m<sup>3</sup>  
Better Indoor  
Air Quality

\*TVOC AT 28 DAYS

### Safetred Design LL

100%

41%

Recyclable  
Recycled content

PHTHALATE  
FREE  
Technology

(1)

<100 µg/m<sup>3</sup>  
Better Indoor  
Air Quality

\*TVOC AT 28 DAYS

### Safetred Design Acoustic

100%

37%

Recyclable  
Recycled content

PHTHALATE  
FREE  
Technology

(1)

<100 µg/m<sup>3</sup>  
Better Indoor  
Air Quality

\*TVOC AT 28 DAYS

(1) For all products produced in 2015

## Logistics Information

**Safetred Design**

Available in rolls

**Rolls length: 20lm**

**Safetred Design LL**

Available in rolls

**Rolls length: 15lm**

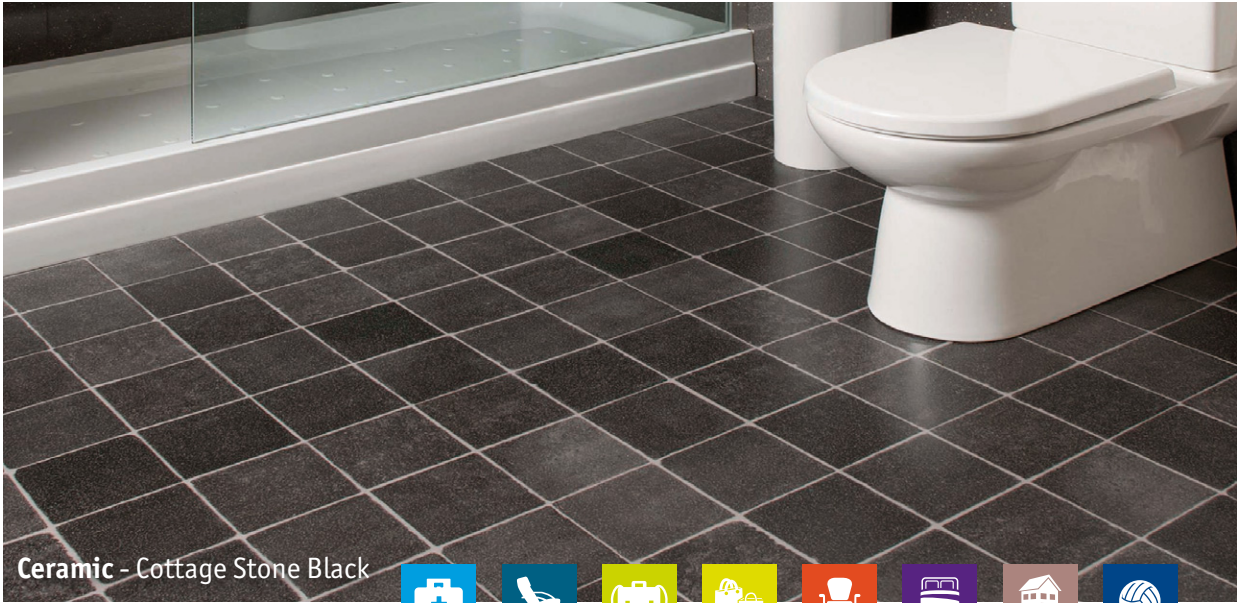
**Safetred Design Acoustic**

Available in rolls

**Rolls length: 15lm**

Laying direction:





Ceramic - Cottage Stone Black

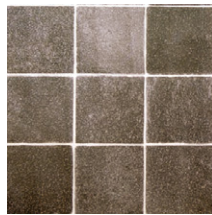


## Ceramic



Cottage Stone Beige

- 26756 011
- 26750 011
- 26757 011



Cottage Stone Black

- 26756 012
- 26750 012
- 26757 012



Melbourne Beige

- 26756 008
- 26750 008
- 26757 008



Melbourne Brown

- 26756 009
- 26750 009
- 26757 009



Melbourne Grey Brown

- 26756 010
- 26750 010
- 26757 010

## Natural



Linen

- 4677 001
- 26754 001
- 26755 001



Lime Stone

- 4677 002
- 26754 002
- 26755 002



Earth

- 4677 003
- 26754 003
- 26755 003



Pearl

- 4677 004
- 26754 004
- 26755 004



Smoke

- 4677 005
- 26754 005
- 26755 005



Pewter

- 4677 006
- 26750 006
- 26757 006



Anthracite

- 4677 007
- 26750 007
- 26757 007



Mist

- 4677 008
- 26750 008
- 26757 008



Dark Blue

- 4677 010
- 26750 010
- 26757 010

# SAFETRED DESIGN Ceramic & Natural

## Main Product Features

- R10 slip resistance, sustainable through product life
- Designed not to look like a safety floor: wide offer of ceramic and natural designs
- New Safetred Design Loose-Lay (LL) option: ideal for refurbishments projects
- New Safetred Design Acoustic option: 19dB sound reduction
- Safety Clean XP™ PUR reinforced surface for improved stain resistance and easy maintenance

## Surface Treatment



## Sustainability Tag

### Safetred Design

<b>100%</b> 42% Recyclable Recycled content	<b>PHthalate FREE</b> Technology <small>*except recycled content</small>	<b>&lt;100 µg/m³</b> Better Indoor Air Quality <small>*TVOC AT 28 DAYS</small>
--	--	---

### Safetred Design LL

<b>100%</b> 41% Recyclable Recycled content	<b>PHthalate FREE</b> Technology <small>*except recycled content</small>	<b>&lt;100 µg/m³</b> Better Indoor Air Quality <small>*TVOC AT 28 DAYS</small>
--	--	---

### Safetred Design Acoustic

<b>100%</b> 37% Recyclable Recycled content	<b>PHthalate FREE</b> Technology <small>*except recycled content</small>	<b>&lt;100 µg/m³</b> Better Indoor Air Quality <small>*TVOC AT 28 DAYS</small>
--	--	---

(1) For all products produced in 2015

## Logistics Information

**Safetred Design**  
Available in rolls  
Rolls length: 20lm

**Safetred Design LL**  
Available in rolls  
Rolls length: 15lm

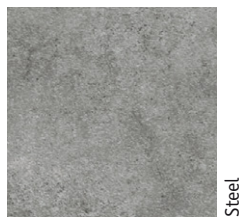
**Safetred Design Acoustic**  
Available in rolls  
Rolls length: 15lm

Laying direction:



TECHNICAL DATA	STANDARDS	Safetred		
		Design	Design LL	Design Acoustic
<b>Classification</b>				
Type of floor covering	EN 13845	Heterogeneous safety floorings		
Classification	EN 13845 commercial industrial	Classes: 34 43	Classes: 34 43	Classes: 34 43
<b>Characteristics</b>				
Total thickness	ISO 24346 (EN 428)	2.0mm	2.35mm	3.5mm
Total weight	ISO 23997 (EN 430)	3 340g/m²	3 410g/m²	3 750g/m²
Safety Clean XP™ PUR reinforcement	—	Yes		
<b>Technical performances</b>				
Abrasion	EN 13845 Annex D	≤10% particle loss after 50,000 cycles		
Residual indentation	Average measured value	≤ 0.10mm		0.15mm
	ISO 24343-1 (EN 433) requirement			≤ 0.20mm
Furniture leg	EN 424	No damage		
Castor chair	ISO 4918 (EN 425)	No damage		
Dimensional stability	ISO 23999 (EN 434)	≤ 0.40%		
Curly resistance to heat	ISO 23999 (EN 434)	≤ 2mm		
Reaction to fire	EN 13501-1	B <sub>f</sub> s1 on cement	C <sub>f</sub> s1 on cement	C <sub>f</sub> s1 on cement
Slip resistance	TRRL Pendulum 4S (wet) BS 7976 part 2 DIN 51130 Surface Roughness Rz EN 13893	> 36  R10 > 20µm ≥ 0.3		
Impact sound reduction	EN ISO 140-8 EN ISO 717/2	ΔL <sub>w</sub> = 4dB	ΔL <sub>w</sub> = 11dB	ΔL <sub>w</sub> = 17dB
Electrical resistance	EN 1815 EN 1081 EN 14041	< 2kV on concrete > 10 <sup>9</sup> ohms. Antistatic on concrete		
Light fastness	EN ISO 105-B02	7		
Chemical resistance	ISO 26987 (EN 423)	Good resistance to everyday substances		
Hygiene	—	Does not contribute to infection spreading		
Thermal resistance Underfloor heating	EN 12524	0.01m² K/W Suitable - Max 27°C		

The above information is subject to modifications for the benefit of further improvement (07/2015).  
For more detailed technical information, please contact Tarkett.



Steel

- 4677 009
- 26750 009
- 26757 009



Grey Beige

- 4677 011
- 26750 011
- 26757 011

## General Information

	<b>Safetred Design</b> 0170-0008-DoP-2014-08 <a href="http://professionals.tarkett.com">http://professionals.tarkett.com</a> Manufactured by: Tarkett Ltd Lenham ME17 2DX, England EN 14041:2004
	<b>Safetred Design LL</b> 0170-0007-DoP-2014-07 <a href="http://professionals.tarkett.com">http://professionals.tarkett.com</a> Manufactured by: Tarkett Ltd Lenham ME17 2DX, England EN 14041:2004
	<b>Safetred Design Acoustic</b> 0170-0010-DoP-2014-08 <a href="http://professionals.tarkett.com">http://professionals.tarkett.com</a> Manufactured by: Tarkett Ltd Lenham ME17 2DX, England EN 14041:2004