

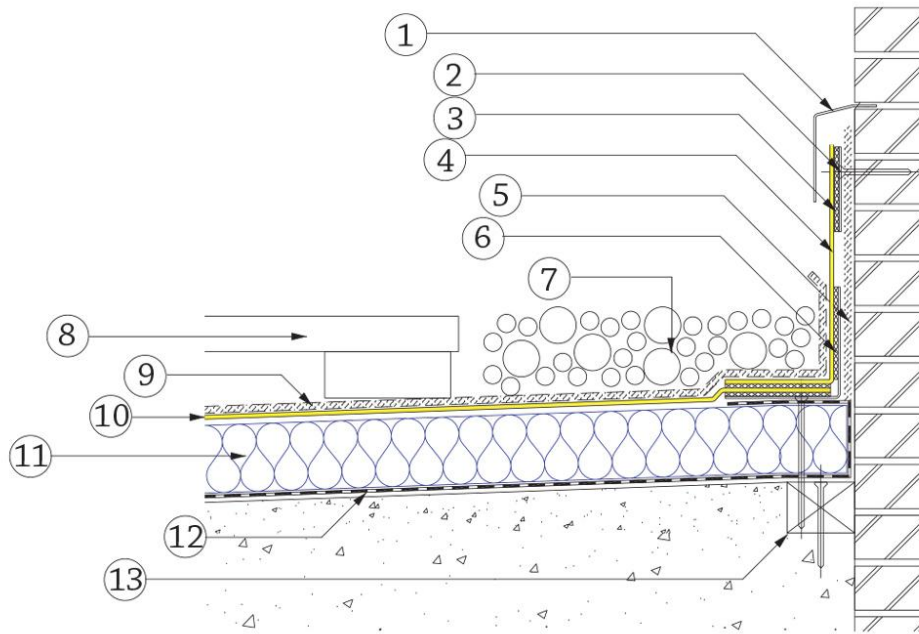


WATERPROOFING MEMBRANES FOR ROOFING

Rely on it.

RENOLIT WATERPROOFING

EXCELLENCE
IN ROOFING



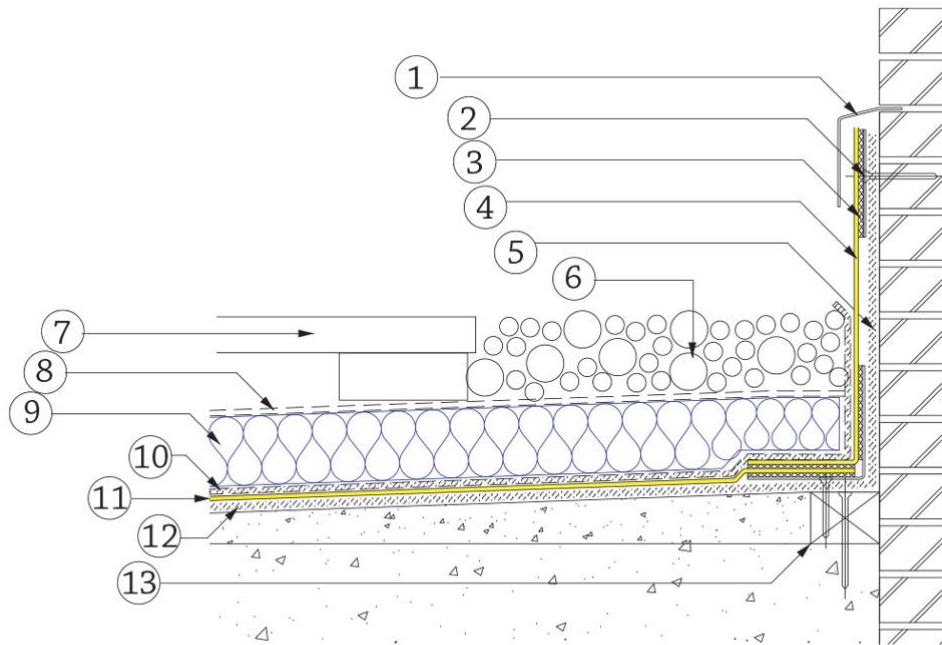
Note:
If wall construction is not insulated block, then insulation will be required to a minimum height of 300 mm.

Warm Roof Paved with Gravel Margin

1. LEAD FLASHING TO BE LEAD PLUGGED TO HOLD FLASHING. PLUGS TO BE FIXED AT 300MM CENTRES. CHASE & FLASHING TO BE POINTED IN MASTIC SEALANT 'BY PLUMBER'
2. RENOLIT ALKORPLAN METAL TRIM
3. HEAT WELD
4. RENOLIT ALKORPLAN F 35176/35276 MEMBRANE
5. RENOLIT ALKORPLUS FLEECE PROTECTION LAYER
6. RENOLIT ALKORPLAN METAL TRIM
7. GRAVEL TO SPECIFICATION
8. PAVING SLABS ON SUPPORT PADS
9. RENOLIT ALKORPLUS 35121 PROTECTION LAYER
10. RENOLIT ALKORPLAN L 35177, NOT FLEECE BACKED
11. INSULATION
12. RENOLIT ALKORPLUS 81012 VAPOUR CONTROL LAYER
13. TREADED TIMBER GROUND



RENOLIT waterproofing
Excellence in roofing

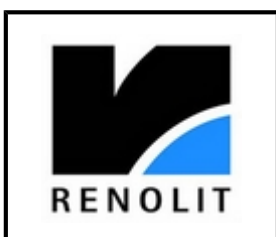


Note:

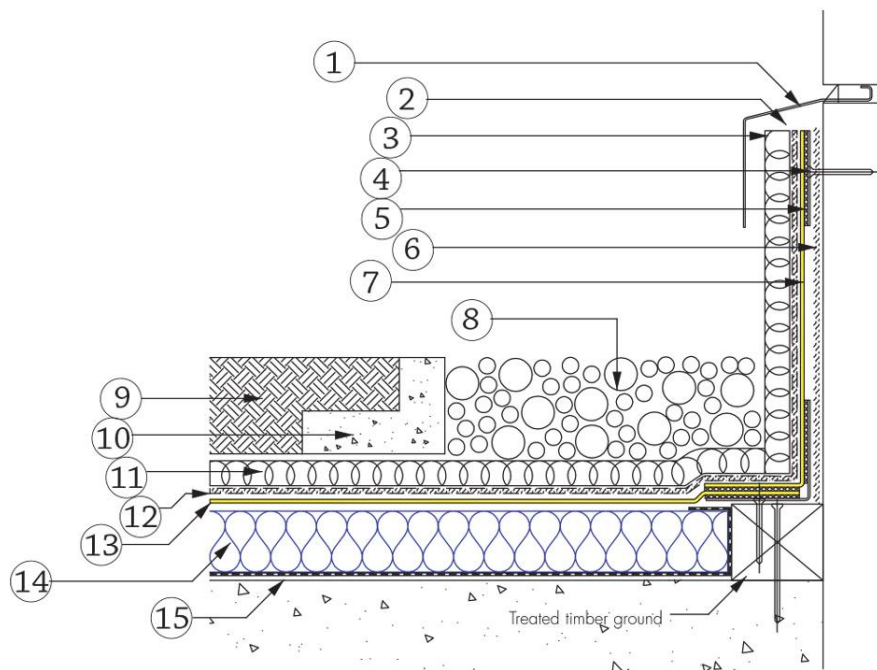
If wall construction is not insulated block, then insulation will be required to a minimum height of 300 mm.

Inverted Roof-Paved with Gravel Margin

1. LEAD FLASHING TO BE LEAD PLUGGED TO HOLD FLASHING. PLUGS TO BE FIXED AT 300MM CENTRES. CHASE & FLASHING TO BE POINTED IN MASTIC SEALANT 'BY PLUMBER'
2. RENOLIT ALKORPLAN METAL TRIM
3. HEAT WELD
4. RENOLIT ALKORPLAN F 35176/35276 MEMBRANE
5. RENOLIT ALKORPLUS FLEECE PROTECTION LAYER
6. GRAVEL TO SPECIFICATION
7. PAVING SLABS ON SUPPORT PADS
8. RENOLIT ALKORPLUS 81014 SLIP LAYER
9. INSULATION
10. RENOLIT ALKORPLAN 35121 PROTECTION MEMBRANE
11. RENOLIT ALKORPLAN L 35177, NOT FLEECE BACKED
12. RENOLIT ALKORPLUS FLEECE PROTECTION LAYER
13. TREADED TIMBER GROUND



RENOLIT waterproofing
Excellence in roofing

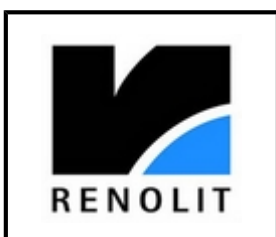


Note:

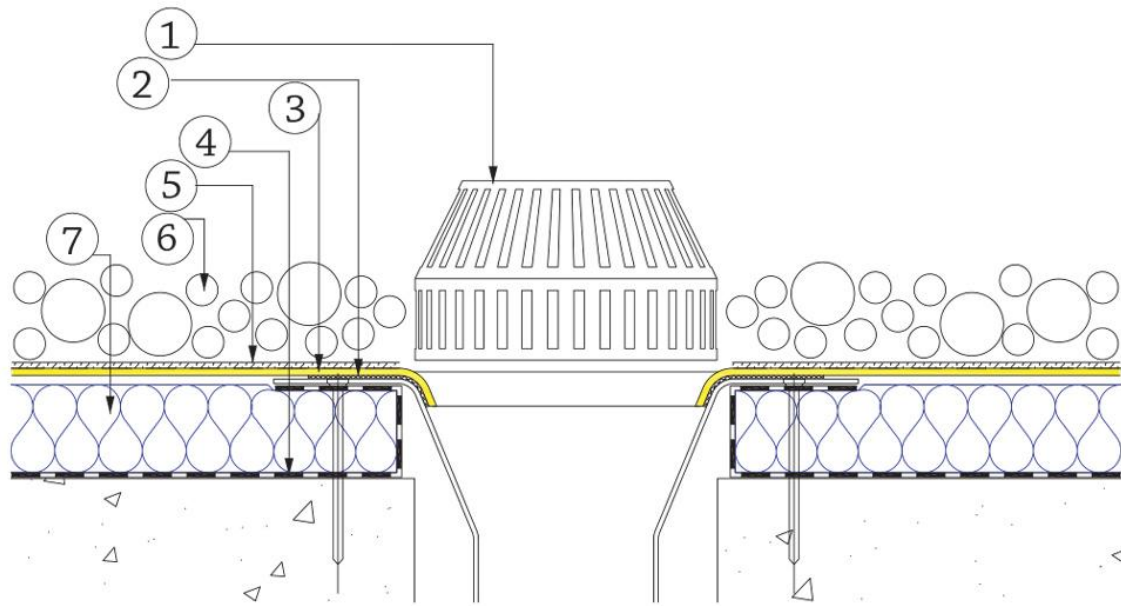
If wall construction is not insulated block, then insulation will be required to a minimum height of 300 mm.

Garden Roof with Gravel Margin

1. LEAD FLASHING TO BE LEAD PLUGGED TO HOLD FLASHING. PLUGS TO BE FIXED AT 300MM CENTRES. CHASE & FLASHING TO BE POINTED IN MASTIC SEALANT 'BY PLUMBER'
2. RENOLIT ALKORPLAN 35121 PROTECTION MEMBRANE
3. RENOLIT ALKORPLUS 81015 FILTER & DRAINAGE MAT
4. RENOLIT ALKORPLAN METAL TRIM
5. HEAT WELD
6. RENOLIT ALKORPLUS FLEECE PROTECTION LAYER
7. RENOLIT ALKORPLAN L 35177, NOT FLEECEDED BACKED
8. GRAVEL TO SPECIFICATION
9. SOIL 300-450 MM DEEP
10. SOIL RETENTION BARRIER
11. RENOLIT ALKORPLUS 81015 FILTER & DRAINAGE MAT
12. RENOLIT ALKORPLAN 35121 PROTECTION MEMBRANE
13. RENOLIT ALKORPLAN L 35177, NOT FLEECEDED BACKED
14. INSULATION
15. RENOLIT ALKORPLUS 81012 VAPOUR CONTROL LAYER



RENOLIT waterproofing
Excellence in roofing



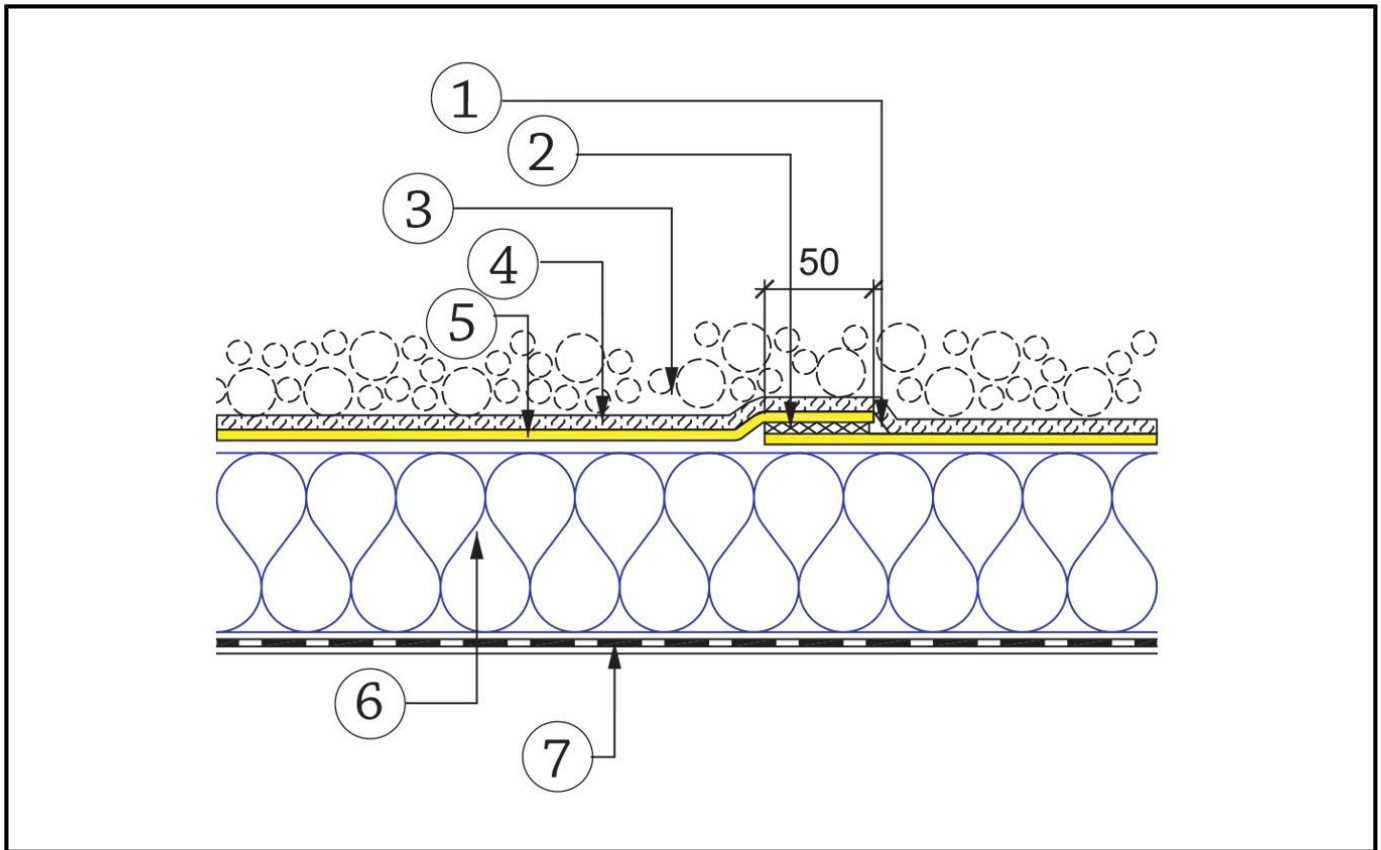
Note:
Outlet body must be insulated from below.

PVC-U Rainwater Outlet

1. RAINWATER OUTLET TO BE ALKORDRAIN OR PROPRIETARY UNIT WITH PVC-U RING FACTORY BONDED TO FLANGE
2. HEAT WELD
3. RENOLIT ALKORPLAN L 35177, NOT FLEECE BACKED
4. RENOLIT ALKORPLUS 81012 VAPOUR CONTROL LAYER
5. RENOLIT ALKORPLAN 35121 PROTECTION MEMBRANE
6. GRAVEL TO SPECIFICATION
7. INSULATION



RENOLIT waterproofing
Excellence in roofing



Loose Laid Ballasted Seam

1. RENOLIT ALKORPLUS 81038 SEAM SEALER
2. HEAT WELD
3. GRAVEL TO SPECIFICATION
4. RENOLIT ALKORPLAN 35121 PROTECTION MEMBRANE
5. RENOLIT ALKORPLAN L 35177, NOT FLEECE BACKED



RENOLIT waterproofing
Excellence in roofing